



Illinois Environmental Protection Agency

Bureau of Water • 1021 N. Grand Avenue E. • P.O. Box 19276 • Springfield • Illinois • 62794-9276

Division of Water Pollution Control ANNUAL FACILITY INSPECTION REPORT

for NPDES Permit for Storm Water Discharges from Separate Storm Sewer Systems (MS4)

This fillable form may be completed online, a copy saved locally, printed and signed before it is submitted to the Compliance Assurance Section at the above address. Complete each section of this report.

Report Period: From March, 2015 To March, 2016

Permit No. ILR40 400370

MS4 OPERATOR INFORMATION: (As it appears on the current permit)

Name: Village of Lake Zurich Mailing Address 1: 505 Telser Road

Mailing Address 2: _____ County: Lake

City: Lake Zurich State: IL Zip: 60047 Telephone: (847) 540-1696

Contact Person: Michael Brown Email Address: mike.brown@lakezurich.org
(Person responsible for Annual Report)

Name(s) of governmental entity(ies) in which MS4 is located: (As it appears on the current permit)

State of Illinois County of Lake
Village of Lake Zurich

THE FOLLOWING ITEMS MUST BE ADDRESSED.

A. Changes to best management practices (check appropriate BMP change(s) and attach information regarding change(s) to BMP and measurable goals.)

- | | | | |
|--|--------------------------|---|--------------------------|
| 1. Public Education and Outreach | <input type="checkbox"/> | 4. Construction Site Runoff Control | <input type="checkbox"/> |
| 2. Public Participation/Involvement | <input type="checkbox"/> | 5. Post-Construction Runoff Control | <input type="checkbox"/> |
| 3. Illicit Discharge Detection & Elimination | <input type="checkbox"/> | 6. Pollution Prevention/Good Housekeeping | <input type="checkbox"/> |

B. Attach the status of compliance with permit conditions, an assessment of the appropriateness of your identified best management practices and progress towards achieving the statutory goal of reducing the discharge of pollutants to the MEP, and your identified measurable goals for each of the minimum control measures.

C. Attach results of information collected and analyzed, including monitoring data, if any during the reporting period.

D. Attach a summary of the storm water activities you plan to undertake during the next reporting cycle (including an implementation schedule.)

E. Attach notice that you are relying on another government entity to satisfy some of your permit obligations (if applicable).

F. Attach a list of construction projects that your entity has paid for during the reporting period.

Any person who knowingly makes a false, fictitious, or fraudulent material statement, orally or in writing, to the Illinois EPA commits a Class 4 felony. A second or subsequent offense after conviction is a Class 3 felony. (415 ILCS 5/44(h))


Owner Signature:

5/24/2016
Date:

Michael Brown

Public Works Director

Printed Name:

Title:

EMAIL COMPLETED FORM TO: epa.ms4annualinsp@illinois.gov

or Mail to: ILLINOIS ENVIRONMENTAL PROTECTION AGENCY
WATER POLLUTION CONTROL
COMPLIANCE ASSURANCE SECTION #19
1021 NORTH GRAND AVENUE EAST
POST OFFICE BOX 19276
SPRINGFIELD, ILLINOIS 62794-9276

This Agency is authorized to require this information under Section 4 and Title X of the Environmental Protection Act (415 ILCS 5/4, 5/39). Failure to disclose this information may result in: a civil penalty of not to exceed \$50,000 for the violation and an additional civil penalty of not to exceed \$10,000 for each day during which the violation continues (415 ILCS 5/42) and may also prevent this form from being processed and could result in your application being denied. This form has been approved by the Forms Management Center.

**Illinois Environmental Protection Agency
Annual Facility Inspection Report
for General Permit for Discharges from Small MS4s**

Village of Lake Zurich

Permit Year 13: March 2015 to February 2016



Contents

Part A. Changes to Best Management Practices A-1
Part B. Status of Compliance with Permit ConditionsB-1
Part C. Information and Data Collection Results C-1
Part D. Summary of Year 14 Stormwater ActivitiesD-1
Part E. Notice of Qualifying Local ProgramE-1

 Part E1. Changes to Best Management Practices E-2
 Part E2. Status of Compliance with Permit Conditions E-3
 Part E3. Information and Data Collection Results E-11
 Part E4. Summary of Year 14 Stormwater Activities..... E-14
 Part E5. Construction Projects Conducted During Year 13 E-26

Part F. Construction Projects Conducted During Year 13 F-1

Part A. MS4 Changes to Best Management Practices, Year 13

Information regarding the status of all of the BMPs and measurable goals described in the MS4's SMPP is provided in the following table.

Note: X indicates BMPs that were implemented in accordance with the MS4's SMPP
✓ indicates BMPs that were changed during Year 13

Year 13 Village of Lake Zurich	
A. Public Education and Outreach	
X	A.1 Distributed Paper Material
	A.2 Speaking Engagement
	A.3 Public Service Announcement
X	A.4 Community Event
X	A.5 Classroom Education Material
X	A.6 Other Public Education
B. Public Participation/Involvement	
	B.1 Public Panel
	B.2 Educational Volunteer
X	B.3 Stakeholder Meeting
X	B.4 Public Hearing
	B.5 Volunteer Monitoring
X	B.6 Program Coordination
X	B.7 Other Public Involvement
C. Illicit Discharge Detection and Elimination	
X	C.1 Storm Sewer Map Preparation
X	C.2 Regulatory Control Program
X	C.3 Detection/Elimination Prioritization Plan
X	C.4 Illicit Discharge Tracing Procedures
X	C.5 Illicit Source Removal Procedures
X	C.6 Program Evaluation and Assessment
X	C.7 Visual Dry Weather Screening
	C.8 Pollutant Field Testing
X	C.9 Public Notification
	C.10 Other Illicit Discharge Controls

Year 13 Village of Lake Zurich	
D. Construction Site Runoff Control	
X	D.1 Regulatory Control Program
X	D.2 Erosion and Sediment Control BMPs
X	D.3 Other Waste Control Program
X	D.4 Site Plan Review Procedures
X	D.5 Public Information Handling Procedures
X	D.6 Site Inspection/Enforcement Procedures
	D.7 Other Construction Site Runoff Controls
E. Post-Construction Runoff Control	
	E.1 Community Control Strategy
X	E.2 Regulatory Control Program
X	E.3 Long Term O&M Procedures
X	E.4 Pre-Const Review of BMP Designs
X	E.5 Site Inspections During Construction
X	E.6 Post-Construction Inspections
	E.7 Other Post-Const Runoff Controls
F. Pollution Prevention/Good Housekeeping	
X	F.1 Employee Training Program
X	F.2 Inspection and Maintenance Program
X	F.3 Municipal Operations Storm Water Control
X	F.4 Municipal Operations Waste Disposal
	F.5 Flood Management/Assess Guidelines
	F.6 Other Municipal Operations Controls

Additional information about the changes that were made to the BMPs described in the Village's SMPP during Year 13 is provided below:

No changes were made to the BMPs described in the Village of Lake Zurich's MS4 SMPP or NOI during Year 13.

Part B. MS4 Status of Compliance with Permit Conditions, Year 13

Stormwater Management Activities, Year 13

The stormwater management activities that the Village of Lake Zurich performed during Year 13, including the Village’s BMPs and measureable goals, are described in detail in the Village’s SMPP. A brief summary of the status of the Village’s stormwater management program, as of the end of Year 13, is provided below.

A. Public Education and Outreach

Measurable Goal(s):

- *Distribute information sheets regarding stormwater BMP, water quality BMP, and proper hazardous waste use and disposal.*
- *Supplemented the stormwater page for the Village website which offers links to additional educational information and ways to contact Village personnel.*
- *Attend/sponsor outreach activities to homeowners / property owner associations, commercial/industrial facilities, schools, and other events.*
- *Coordinate, publicize, and participate in bi-annual SWALCO events.*
- *Track progress of BMP implementation and document successes and failures as described in the SMPP.*

The Village of Lake Zurich continues to implement the BMPs described in its SMPP and to track progress in implementing its stormwater management program. The Village performed the following list of activities meeting the goals of Public Education and Outreach as listed in the Village’s MS4 Log Book for Year 13:

Activity	Attendance / Quantity Measure
Benchmarks Announcement - Buffalo Creek Clean Water Partnership March 19 Meeting Advertised in Village e-newsletter	1600 email subscribers averaging >50% open rate
Benchmarks Announcement - Storm water management survey Advertised in Village e-newsletter.	1600 email subscribers averaging >50% open rate
Benchmarks Announcement - Storm water management survey Advertised in Village e-newsletter.	1600 email subscribers averaging >50% open rate
Benchmarks Announcement - Stormwater Management Committee discussion at June 15 Board Meeting Advertised in Village e-newsletter.	1600 email subscribers averaging >50% open rate
Benchmarks Announcement - Local Storm Water Management Article in Village e-newsletter.	1600 email subscribers averaging >50% open rate
Benchmarks Announcement - Stormwater Management discussion at October 19 Board Meeting Advertised in Village e-newsletter.	1600 email subscribers averaging >50% open rate

Activity	Attendance / Quantity Measure
Screenshot: Village of Lake Zurich stormwater webpage update - Creation of a dedicated Storm Water Management page	5 new links, updated Annual Report, the SMPP, NOI, and a contact telephone number for stormwater concerns
Stormwater Related Brochures and Materials Available to Public at Community Services. Refreshed annually. Checked at various times throughout the year. Pamphlets are displayed at Community Services with information on building permits.	Citizen's Guide to Stormwater info booklet, Homeowner guide to Stormwater BMPs, HOA and Property Manager's BMP Guide, Homeowner's Wetland Care Guide, Flood informational pamphlets, Northeast Illinois Flood Protection Packets, Children's Water Pollution Packets, Rain Garden Informational/How To Booklets
Village of Lake Zurich web announcement - Arbor Day Cleanup flyer posted	Web posting

B. Public Participation/Involvement

Measurable Goal(s):

- *Allow and encourage public review of SMPP.*
- *Present Annual Report to Village Board.*
- *Attend/Sponsor watershed planning and stakeholders meetings.*
- *Maintain an Illicit Discharge/Illegal Dumping hotline.*
- *Participate in events offered by the QLP.*
- *Track progress of BMP implementation and document successes and failures as described in the SMPP.*

The Village of Lake Zurich continues to implement the BMPs described in its SMPP and to track progress in implementing its stormwater management program. The Village performed the following list of activities meeting the goals of Public Participation/Involvement as listed in the Village's MS4 Log Book for Year 13:

Activity	Attendance / Quantity Measure
Municipal Advisory Committee Meeting Agenda & 12/10/14 Minutes - Presentations on beaver ecology & Conserve Lake County. Discussed updates of concern including ACOE, WDO updates, NPDES updates, Inter-jurisdictional programs, & grants	Attendees: 1
Municipal Advisory Committee Meeting Agenda & 3/11/15 Minutes: BMP Maintenance, ACE WOUS definitions, Changes in the County WDO	Attendees: 2
Municipal Advisory Committee Meeting Agenda & 6/10/15 Minutes Urban flooding awareness, inter-jurisdictional working relationships, County comprehensive stormwater plan updates	Attendees: 1

Activity	Attendance / Quantity Measure
Municipal Advisory Committee Meeting Agenda & 9/23/15 Minutes Stream inventories, BMP maintenance (prescriptive burns), County WDO adoption progress	Attendees: 1
Lake Zurich Board of Trustees Meeting Minutes - Discussion to create a Stormwater Management Committee	3 Residents commented for discussion
Buffalo Creek Clean Water Partnership - Stakeholder Meeting #12: Updated on Winter chloride monitoring, watershed planning process update, summary on Watershed Plan evaluation	Attendees: 1
Buffalo Creek Clean Water Partnership - Stakeholder Meeting #13: Updated on Winter chloride monitoring, watershed planning process update, summary on Watershed Plan evaluation. Also discussed events for 2016	Attendees: 1
Stormwater Management Survey - poll on importance and funding of stormwater infrastructure.	10 Questions (346 respondents) + 120 comments on importance and funding for Stormwater infrastructure.
Des Plaines River Watershed Workgroup Membership Meeting - Meeting Packet Discussions & Presentations on Wet weather sampling, Chloride monitoring, NPDES Permits, Monitoring plans, Dues, Workgroup agreement, and RFP	Attendees: 1
Des Plaines River Watershed Workgroup Membership Meeting - Meeting Packet Minutes from 5/15/15 meeting, Denitrification at the Des Plaines River Riffle presentation, Member business and Monitoring Committee	Attendees: 1
Des Plaines River Watershed Workgroup Membership Meeting - Meeting Packet Minutes from 8/13/15 meeting, NPDES presentation, Member business and Monitoring/Impairments/Lakes Committee	Attendees: 1

C. Illicit Discharge Detection and Elimination

Measurable Goal(s):

- *Enforce Village IDDE Ordinance.*
- *Conduct business inspections as needed.*
- *Review and update the Village's outfall map.*
- *Screen and Inspect Village Outfalls every five years.*
- *Track progress of BMP implementation and document successes and failures as described in the SMPP.*

The Village of Lake Zurich continues to implement the BMPs described in its SMPP and to track progress in implementing its stormwater management program.

The Village performed the following list of activities meeting the goals of Illicit Discharge Detection and Elimination as listed in the Village’s MS4 Log Book for Year 13:

Activity	Attendance / Quantity Measure
Water sampling contract and locations - Water quality baseline samples taken for strategic locations around the Village. Results to be reviewed as part of annual review of Stormwater Management Program Plan and included in Annual Report.	7 locations testing for 9 minimum common parameters.
Violation on Lions Drive - Wetland/Floodplain work (vegetation removal, possibly fill) within wetland and floodplain. Required resident to submit landscaping plans and compared with platted wetland requirements.	Resident complied with Village requests
Old Rand Rd - Unauthorized shoreline work violation Stop work for unauthorized fill in floodplain.	Resident complied with Village requests to restore
Dry Weather Sampling inspection sheets and summary for previous year's suspected illicit discharge locations.	2 locations
Storm Sewer Map update for tracking and inspection purposes of newer, high-priority outfalls (Industrial park outfalls). SEE MCM5 - POST-CONSTRUCTION STORMWATER MANAGEMENT FOR DOCUMENTATION	5 Sections, multiple BMPs for detention/retention basins.
Ordinance adopting the new Lake County Watershed Development Ordinance - Ordinance has provisions for design of developments and stormwater facilities to limit stormwater impacts of development and construction.	SEE MCM4 - CONSTRUCTION STORMWATER RUNOFF CONTROL FOR ORDINANCE COPY

D. Construction Site Runoff Control

Measurable Goal(s):

- *Enforce Village IDDE Ordinance.*
- *Field public input on construction site conditions.*
- *Implement BMPs and track progress of BMP implementation, as described in the SMPP.*
- *Ensure that all applicable developments are in compliance with the WDO.*

The Village of Lake Zurich continues to implement the BMPs described in its SMPP and to track progress in implementing its stormwater management program.

The Village continues to enforce the Village IDDE Ordinance and ensure that all applicable developments are in compliance with the WDO.

The Village performed the following list of activities meeting the goals of Construction Site Runoff Control as listed in the Village’s MS4 Log Book for Year 13:

Activity	Attendance / Quantity Measure
Ordinance adopting the new Lake County Watershed Development Ordinance - Ordinance has provisions for design of developments and stormwater facilities to limit stormwater impacts of development and construction.	
Summary of Reviews and Site Visits for Construction Stormwater Weekly (or as necessitated by >0.5" rain) review of construction site inspection documents prepared by qualified inspectors for SWPPP adequacy and compliance. Sites hydrologically disturb >1 acre and/or have other qualifying conditions specified by ordinance to require weekly inspections. See CONSTRUCTION STORMWATER SITE INSPECTION LOG for more information.	-2015 Construction Stormwater Permit Monitoring (7 sites) -2016 Construction Stormwater Permit Monitoring (2 sites) -2015-2016 Enforcement Officer Inspections & Village Projects (15 inspections of village project, 8 field inspections of developments)
Construction site visit to ensure Erosion/Sediment Control effectiveness and compliance. Also verifies the weekly inspection reports by third party. Correspondence to contractors/developers for violations included.	4 site visited, for issues noted, (see documentation for details)
DECI site visit - Construction site visits to ensure compliance with WDO See CONSTRUCTION STORMWATER SITE INSPECTION LOG for more information.	1 site set-up/installation with follow-up to SMC
DECI site visit - Construction site visits to ensure compliance with WDO (ADDITIONAL INFORMATION IN CONSTRUCTION STORMWATER SITE INSPECTION LOG)	2 new sites - areas of concern noted and passed on to DECI and contractors
Drive-by inspection due to tracking from one of the construction sites. Follow-up with compliance request to contractor	Contractor responded that afternoon with clean-up. Followed up next day with stone refresh of construction entrance
Cuba Rd Sanitary Transmission Repairs - All locations paved/stabilized with permanent seed/blanket. Village oversaw proper dewatering methods, work adjacent to ADID wetlands, and street sweeping after sediment tracking	Stabilization of 3/4 Acre of disturbance adjacent to ADID wetland. SEE CONSTRUCTION STORMWATER SITE INSPECTION LOG FOR REPORTS
Construction site visit to ensure Erosion/Sediment Control effectiveness and compliance. Also verifies the weekly inspection reports by third party.	1 site visited, minor issues noted
DECI site visit - Final review for compliance with WDO See CONSTRUCTION STORMWATER SITE INSPECTION LOG for more information.	1 site - final review for stabilization

E. Post-Construction Runoff Control

Measurable Goal(s):

- *Conduct periodic inspections of stormwater facilities based on field reports.*
- *Implement BMPs and track progress of BMP implementation, as described in the SMPP.*
- *Enforce the Village’s IDDE Ordinance and ensure that all applicable developments are in compliance with the WDO.*
- *Track progress of BMP implementation and document successes and failures as described in the SMPP.*

The Village of Lake Zurich continues to implement the BMPs described in its SMPP and to track progress in implementing its stormwater management program. The Village continues to ensure that all applicable developments are in compliance with the WDO.

The Village performed the following list of activities meeting the goals of Post-Construction Runoff Control as listed in the Village’s MS4 Log Book for Year 13:

Activity	Attendance / Quantity Measure
Construction Stormwater Permit Monitoring Log (Also see CONSTRUCTION STORMWATER SITE INSPECTION LOG for details and photos)	5 Sites with final stabilization, 2 NOTs submitted in 2015
Review of Stormwater Management Area Maintenance Plans	1 site reviewed

F. Pollution Prevention/Good Housekeeping

Measurable Goal(s):

- *Ensure contractors working on Village projects minimize pollutants released.*
- *Conduct creek/drainage way/pond & lake clean-up.*
- *Perform or ensure contracted companies performing landscaping maintenance utilize BMPs to ensure chemicals and debris are controlled.*
- *Train operators and conduct snow removal operations in accordance with BMP standards.*
- *Train Village employees in general BMP usage and implementation.*
- *Utilize BMPs and proper disposal practices for vehicle maintenance and O&M procedures.*
- *Implement BMPs and track progress of BMP implementation, as described in the SMPP.*
- *Enforce the Village’s IDDE Ordinance and ensure that all applicable developments are in compliance with the WDO.*

- Track progress of BMP implementation and document successes and failures as described in the SMPP.

The Village of Lake Zurich continues to implement the BMPs described in its SMPP and to track progress in implementing its stormwater management program.

The Village performed the following list of activities meeting the goals of Pollution Prevention/Good Housekeeping as listed in the Village’s MS4 Log Book for Year 13:

Activity	Attendance / Quantity Measure
De-icing Chemical Use summary: The Village minimizes its use of salt application to roadways, drives, and parking lots (and therefore its presence in the stormwater) by utilizing various alternative anti-icing mixtures, application timing, and calibrated spreading rates.	934.3 TON granular salt used; 81001 GAL Anti-Ice mix used; 9291 GAL Pre-wet used; 77.8 TON Brine;
Street Sweeping Records Performed mainly during spring to pick up winter debris and in the fall and after major storm events. Regular sweeping keeps road debris out of storm sewers	128.29 Cubic Yards of material. See documentation for street locations.
Storm Activities Hours Records: records for hours worked by public works employees cleaning storm sewers and structures, drainage ways, and cleanup due to storm events	1206.5 hours committed to stormwater and storm clean-up, repairs, televising, unclogging, and cleaning.
Roadside trash & Park trash pickup Records: pickup from gutter lines, drainage swales, drainage areas, and parks occurs regularly throughout the year & keeps trash from entering waterways.	13 days of roadside trash pick-up 46 days of park trash pick-up
2015-2016 Community Services Budget excerpt Committed budget line for Public Works employees and equipment for stormwater-related activities per the budget year.	\$153,359.00 budgeted on personnel, contractual maintenance, tools/equipment, and other expenses
Salt Institute - Safe and Sustainable Snow fighting Award: Facilities recognized for minimizing salt run-off while maintaining public safety during snow and ice events.	Awarded to Lake Zurich Public Works Facility out of only 90 facilities in US and Canada
2015 Mosquito Larvicide Application Course - Department of Agriculture: Certification for application of USEPA registered products for mosquito control and abatement.	Attendees: 2
De-icing Chemical Use summary: The Village minimizes its use of salt application to roadways, drives, and parking lots (and therefore its presence in the stormwater) by utilizing various alternative anti-icing mixtures, application timing, and calibrated spreading rates.	934.3 TON granular salt used; 81001 GAL Anti-Ice mix used; 9291 GAL Pre-wet used; 77.8 TON Brine;
Street Sweeping Records Performed mainly during spring to pickup winter debris and in the fall and after major storm events. Regular sweeping keeps road debris out of storm sewers	128.29 Cubic Yards of material. See documentation for street locations.

Stormwater Management Program Assessment, Year 13

In Year 13, the Village of Lake Zurich performed an assessment of its SMPP and adherence/implementation of the document. The Village was committed to following the SMPP and implementing it accordingly. In summary:

- The Village continues to work towards improvements in stormwater maintenance utilizing and fostering relationships with local developers and homeowners as well as watershed groups, the QLP and other regional groups, and state and federal agencies.
- The Village continues to implement its SMPP via various studies and projects to improve the stormwater conveyance and storage within the Village. Lake Zurich is committed to improve protection to property and improvements to water quality within the Village and Lake County.
- The Village of Lake Zurich continues to enforce standards of the WDO for all applicable developments within its jurisdiction.
- Lake Zurich continues to train employees in proper BMPs and the importance of stormwater and water quality.

The overall assessment of the Village's stormwater management program and the appropriateness of its BMPs is provided below.

In Year 13, the Village of Lake Zurich performed testing of waters within and downstream of its boundaries to obtain baseline levels of pollutants. It is believed that, upon further data being collected in the following years, this will quantitatively show the effectiveness of the Village's SMPP. Additionally, the Village's consistent efforts to minimize salt use was recognized by the Salt Institute's awarding of their Safe and Sustainable Snowfighting Award to Lake Zurich's Public Works Department.

Part C. MS4 Information and Data Collection Results, Year 13

Annual Monitoring and Data Collection, Year 13

Information and data that the Village of Lake Zurich collected to meet the annual monitoring requirement of IEPA's General NPDES Permit No. ILR40 are summarized below.

Water quality testing was completed by a third party environmental contractor at 7 different locations throughout the Village including 2 locations on Flint Creek, Briggs Lake, Lake Zurich, Kildeer Creek, Village Square pond 3, and Buffalo Creek. Water quality locations and samples were taken to develop base levels for further data monitoring and to aid in locating locations that may require further investigation.

Year 13 water quality samples were collected on February 6, 2016 and were analyzed for the following parameters below. The physical characteristics of the sampling point were observed and water quality samples (i.e., grab samples) were collected. Collected water quality samples were tested for a variety of parameters with the main items of concern being levels of fecal coliform bacteria, chlorides, and nitrogen. A comparison of the samples shows the Flint Creek samples generally contained elevated levels of total nitrogen, fecal coliform bacteria, and total suspended solids. The Village plans to further evaluate these results in Year 14 and react accordingly.

Data results for the samples can be received upon request.

IDDE Monitoring and Data Collection, Year 13

Information and data that the Village of Lake Zurich collected as part of its illicit discharge detection and elimination program are summarized below.

Water quality sampling was performed to locate problematic concentrations of potential pollutants. The following acceptable range was verified for water bodies described above:

<u>PARAMETER</u>	<u>ACCEPTABLE RANGE</u>
Temperature	< 60 F
pH	6.5 to 9
Chloride	< 500 mg/L
Phosphorus	< 0.05 mg/l
Ammonia	< 15 mg/L
Dissolved Oxygen	> 3.8 mg/l
Fecal Coliform Bacteria	< 200 count/100 ml* (and per IL Pollution Control Board)

The ranges were adjusted for the time of year as necessary. Laboratory sampling analysis was performed by the Lake County Health Department laboratory. Additional parameters were also measured for general water quality indication including Total Suspended Solids, Specific Conductance, Fats Oils and Grease, and Total Dissolved Solids.

Part D. MS4 Summary of Year 14 Stormwater Activities

The table below indicates the stormwater management activities that the Village of Lake Zurich plans to undertake during Year 14. Additional information about the stormwater management activities that the Village will perform during Year 14 is provided in the section following the table.

Note: X indicates BMPs that will be implemented during Year 14

Year 14	
MS4	
A. Public Education and Outreach	
X	A.1 Distributed Paper Material
	A.2 Speaking Engagement
	A.3 Public Service Announcement
X	A.4 Community Event
X	A.5 Classroom Education Material
X	A.6 Other Public Education
B. Public Participation/Involvement	
	B.1 Public Panel
	B.2 Educational Volunteer
X	B.3 Stakeholder Meeting
X	B.4 Public Hearing
	B.5 Volunteer Monitoring
X	B.6 Program Coordination
X	B.7 Other Public Involvement
C. Illicit Discharge Detection and Elimination	
X	C.1 Storm Sewer Map Preparation
X	C.2 Regulatory Control Program
X	C.3 Detection/Elimination Prioritization Plan
X	C.4 Illicit Discharge Tracing Procedures
X	C.5 Illicit Source Removal Procedures
X	C.6 Program Evaluation and Assessment
X	C.7 Visual Dry Weather Screening
	C.8 Pollutant Field Testing
X	C.9 Public Notification
	C.10 Other Illicit Discharge Controls

Year 14	
MS4	
D. Construction Site Runoff Control	
X	D.1 Regulatory Control Program
X	D.2 Erosion and Sediment Control BMPs
X	D.3 Other Waste Control Program
X	D.4 Site Plan Review Procedures
X	D.5 Public Information Handling Procedures
X	D.6 Site Inspection/Enforcement Procedures
	D.7 Other Construction Site Runoff Controls
E. Post-Construction Runoff Control	
	E.1 Community Control Strategy
X	E.2 Regulatory Control Program
X	E.3 Long Term O&M Procedures
X	E.4 Pre-Const Review of BMP Designs
X	E.5 Site Inspections During Construction
X	E.6 Post-Construction Inspections
	E.7 Other Post-Const Runoff Controls
F. Pollution Prevention/Good Housekeeping	
X	F.1 Employee Training Program
X	F.2 Inspection and Maintenance Program
X	F.3 Municipal Operations Storm Water Control
X	F.4 Municipal Operations Waste Disposal
	F.5 Flood Management/Assess Guidelines
	F.6 Other Municipal Operations Controls

Please note that IEPA has issued a new version of its General NPDES Permit No. ILR40 (Permit). The new version of the Permit became effective on March 1, 2016. According to the new Permit, MS4s have 180 days from the effective date of the Permit to comply with any changes or new provisions contained in the Permit.

The Village of Lake Zurich is committed to maintaining its current stormwater management program, which is described in more detail below, and will work to update and enhance its program, as needed, over the coming months, to comply with the requirements of the new Permit version. Next year's annual report will contain information regarding the changes that have been made to the Village of Lake Zurich's stormwater management program to comply with the new requirements of the Permit if necessary.

Stormwater Management Activities, Year 14

During Year 14, the Village of Lake Zurich plans to continue to perform a variety of stormwater management activities, as described in detail in the Village's SMPP and in brief below.

A. Public Education and Outreach

The Village of Lake Zurich is committed to implementing the Public Education and Outreach component of its SMPP. The Village's Public Education and Outreach program includes: the distribution of educational material to the community, publicizing and otherwise supporting SWALCO events, and encouraging participation with other regional water quality organizations.

Measurable Goal(s):

- *Distribute information sheets regarding stormwater BMP, water quality BMP, and proper hazardous waste use and disposal via pamphlets and the Village website. Review popularity of certain packets bi-annually and document in Year 14 Log Book.*
- *Maintain and supplement as necessary the section of the Village website which offers links to additional educational information and ways to contact Village personnel.*
- *Attend/sponsor outreach activities to homeowners / property owner associations, commercial/industrial facilities, schools, and other events.*
- *Sponsor storm drain stenciling and educational presentations at local schools.*
- *Coordinate, publicize, and participate in bi-annual SWALCO events.*
- *Track progress of BMP implementation and document successes and failures as described in the SMPP.*

B. Public Participation/Involvement

The Village of Lake Zurich is committed to implementing the Public Participation/Involvement component of its SMPP. The Village's Public Participation/Involvement program includes: maintaining a process for receiving and processing citizen input; attending and publicizing stakeholder meetings; presenting program information at a public meeting at least once annually; and, publicizing IDDE reporting contact numbers.

Measurable Goal(s):

- *Attend/Sponsor watershed planning and stakeholders meetings.*
- *Maintain an Illicit Discharge/Illegal Dumping hotline.*

- *Participate in events offered by the QLP.*
- *Track progress of BMP implementation and document successes and failures as described in the SMPP.*
- *Engage local schools in storm drain stenciling activities.*

C. Illicit Discharge Detection and Elimination

The Village of Lake Zurich will conduct activities related to the Illicit Discharge Detection and Elimination (IDDE) minimum control measure. According to IEPA's General NPDES Permit No. ILR40, the Village's IDDE program must include:

- *An updated storm sewer system map showing the locations of all outfalls and the names and locations of all waters that receive discharges from those outfalls;*
- *An ordinance or other regulatory mechanism that prohibits all non-storm water discharges into the storm sewer system and provides the authority for appropriate enforcement procedures and actions;*
- *A plan to detect and address all non-stormwater discharges, including illegal dumping, into the storm sewer system;*
- *A program to educate public employees, businesses, and the general public about the hazards associated with illegal discharges and improper disposal of waste; and,*
- *Periodic inspection of storm sewer outfalls for detection of non-stormwater discharges and illegal dumping.*

Measurable Goal(s):

- *Implement BMPs and track progress of BMP implementation, as described in the SMPP.*
- *Enforce Village IDDE Ordinance.*
- *Review the Village's storm sewer map.*
- *Evaluate existing outfalls and determine critical outfalls in need of frequent inspection as defined by the Permit.*
- *Track progress of BMP implementation and document successes and failures as described in the SMPP.*

D. Construction Site Runoff Control

Lake County has adopted a countywide Watershed Development Ordinance (WDO) that establishes the minimum stormwater management requirements for development in Lake County. The WDO, which is administered and enforced within the community by the Village, establishes standards for construction site runoff control. The Village has adopted the WDO and utilizes Lake Zurich's IDDE Ordinance as a means to enforce the WDO within the Village's jurisdiction.

Measurable Goal(s):

- *Implement BMPs and track progress of BMP implementation, as described in the SMPP.*
- *Continue enforcement of the Village's IDDE Ordinance and ensure that all applicable developments are in compliance with the WDO.*

E. Post-Construction Runoff Control

As described above, the countywide WDO establishes the minimum stormwater management requirements for development in Lake County. The WDO establishes standards for post-construction site runoff control. These standards apply to any new development or redevelopment resulting in over 0.5 acres of new impervious area. The Village's SMPP also includes inspection procedures for pre-WDO developments, streambanks and shorelines, streambeds, and detention/retention ponds.

Measurable Goal(s):

- *Implement BMPs and track progress of BMP implementation, as described in the SMPP.*
- *Enforce the Village's IDDE ordinance ensure that all applicable developments are in compliance with the WDO.*

F. Pollution Prevention/Good Housekeeping

The Village of Lake Zurich is committed to implementing the Pollution Prevention/Good Housekeeping component of its SMPP. The Village's Pollution Prevention/Good Housekeeping program includes: the evaluation and improvement of municipal policies and procedures to reduce the discharge of pollutants from municipal activities and operations; and, a training program for municipal employees.

Measurable Goal(s):

- *Train new and Seasonal employees in BMPs and general NPDES requirements.*
- *Ensure the use of BMPs by Village contractors during Lake Zurich's street maintenance program construction operations.*
- *Continue maintenance on drainage ways to keep clear of debris and litter.*
- *Track and minimize salt and chemical usages during snow and ice control operations.*
- *Ensure landscaping operations utilize proper BMPs.*
- *Perform maintenance of catch basins as needed.*
- *Maintain proper O&M procedures for vehicle and Public Works site maintenance.*
- *Implement BMPs and track progress of BMP implementation, as described in the SMPP.*

Part E. Notice of Qualifying Local Program

The Lake County Stormwater Management Commission (SMC) serves as a Qualifying Local Program (QLP) for MS4s in Lake County. In accordance with IEPA's General NPDES Permit No. ILR40, as a QLP, SMC performs activities related to each of the six minimum control measures. This part of the Annual Report, which summarizes the stormwater management activities performed by SMC as a QLP, consists of the following five sections:

- **Part E1** identifies changes to Best Management Practices (BMPs) that occurred during Year 13 and includes information about how these changes affected the QLP's stormwater management program.
- **Part E2** describes the stormwater management activities that the QLP performed during Year 13.
- **Part E3** summarizes the information and data collected by the QLP during Year 13.
- **Part E4** describes the stormwater management activities that the QLP plans to undertake during Year 14.
- **Part E5** lists the construction projects conducted by the QLP during Year 13.

Please note that portions of the QLP's reported activities do not apply to the Village of Lake Zurich.

Part E1. QLP Changes to Best Management Practices, Year 13

Note: X indicates BMPs that were implemented as planned
 ✓ indicates BMPs that were changed during Year 13

Year 13	
QLP	
A. Public Education and Outreach	
X	A.1 Distributed Paper Material
	A.2 Speaking Engagement
X	A.3 Public Service Announcement
X	A.4 Community Event
X	A.5 Classroom Education Material
X	A.6 Other Public Education
B. Public Participation/Involvement	
X	B.1 Public Panel
	B.2 Educational Volunteer
X	B.3 Stakeholder Meeting
	B.4 Public Hearing
	B.5 Volunteer Monitoring
X	B.6 Program Coordination
	B.7 Other Public Involvement
C. Illicit Discharge Detection and Elimination	
	C.1 Storm Sewer Map Preparation
X	C.2 Regulatory Control Program
	C.3 Detection/Elimination Prioritization Plan
	C.4 Illicit Discharge Tracing Procedures
	C.5 Illicit Source Removal Procedures
	C.6 Program Evaluation and Assessment
	C.7 Visual Dry Weather Screening
	C.8 Pollutant Field Testing
	C.9 Public Notification
X	C.10 Other Illicit Discharge Controls

Year 13	
QLP	
D. Construction Site Runoff Control	
X	D.1 Regulatory Control Program
X	D.2 Erosion and Sediment Control BMPs
X	D.3 Other Waste Control Program
X	D.4 Site Plan Review Procedures
X	D.5 Public Information Handling Procedures
X	D.6 Site Inspection/Enforcement Procedures
	D.7 Other Construction Site Runoff Controls
E. Post-Construction Runoff Control	
	E.1 Community Control Strategy
X	E.2 Regulatory Control Program
X	E.3 Long Term O&M Procedures
X	E.4 Pre-Const Review of BMP Designs
X	E.5 Site Inspections During Construction
X	E.6 Post-Construction Inspections
X	E.7 Other Post-Const Runoff Controls
F. Pollution Prevention/Good Housekeeping	
X	F.1 Employee Training Program
	F.2 Inspection and Maintenance Program
	F.3 Municipal Operations Storm Water Control
	F.4 Municipal Operations Waste Disposal
X	F.5 Flood Management/Assess Guidelines
	F.6 Other Municipal Operations Controls

Part E2. QLP Status of Compliance with Permit Conditions, Year 13

The Lake County Stormwater Management Commission (SMC) serves as a Qualifying Local Program (QLP) for MS4s in Lake County. In accordance with IEPA's NPDES General Permit No. ILR40, as a QLP, SMC performs activities related to each of the six minimum control measures. The stormwater management activities that the QLP performed during Year 13 are described below.

A. Public Education and Outreach

A.1 Distributed Paper Material

Measurable Goal(s): Distribute informational materials from "take away" rack at SMC. Upon request, distribute materials directly to municipalities for local distribution.

SMC distributes a variety of informational materials related to stormwater management through its "take away" rack and website.

Upon request, informational materials are distributed directly to Lake County MS4s in .PDF format for use on community websites, in community newsletters, and in community "take away" racks.

A.3 Public Service Announcement

Measurable Goal(s): Include public service announcement highlighting community accomplishments related to IEPA's NPDES Stormwater Program in "Mainstream" once annually. Post watershed identification signage with LCDOT. Upon request, present "The Big Picture: Water Quality, Regulations & NPDES" to Lake County MS4s.

SMC includes announcements highlighting community accomplishments related to IEPA's NPDES Stormwater Program on its website, in its newsletter, and through other media outlets.

Watershed identification signage is located throughout the county.

SMC continues to make available "The Big Picture: Water Quality, Regulations & NPDES" presentation to Lake County MS4s.

A.4 Community Event

Measurable Goal(s): Sponsor or co-sponsor workshop on a topic related to IEPA's NPDES Stormwater Program.

SMC sponsored or co-sponsored a number of workshops and events on stormwater-related topics between March 1, 2015 and February 28, 2016, including:

- Presentation from Conserve Lake County on the Conservation@Home Program at Mar. 11, 2015 MAC meeting

- Presentation from SMC about its Public Education, Outreach and Engagement activities at Mar. 11, 2015 MAC meeting
- Webcast on The Runoff Reduction Method and Its Applications on Mar. 18, 2015
- Homeowners Association (HOA) Stormwater Maintenance Workshop held in Grayslake, IL on May 19, 2015
- Fox River/Chain O'Lakes river clean-up in Fox Lake, Port Barrington & Antioch, IL on May 9, 2015
- Chicago River clean-up (Chicago River Day) in Lincolnshire, Highland Park, Lake Forest & Deerfield, IL on May 9, 2015
- Rain Barrel, Compost Bin, and Native Plant Sale held in Libertyville, IL on May 9, 2015
- Buffalo Creek clean-up (Rylko Community Park Workday) in Buffalo Grove, IL on May 16, 2015
- Webcast on Green Infrastructure and Green Jobs on May 20, 2015
- Riparian Landowner Workshop held in Beach Park, IL on May 26, 2015
- Lake County Green Conference held in Grayslake, IL on May 27, 2015
- Presentation on Post-Construction Stormwater BMP Maintenance at Jun. 10, 2015 MAC meeting
- Webcast on Multi-Sector and Industrial Stormwater Permits on Jun. 10, 2015
- Des Plaines River clean-up in Vernon Hills, IL on Sep. 12, 2015
- Webcast on What To Do About Trashy Watersheds on Sep. 16, 2015
- Presentation from IDNR about its Urban Flood Awareness Act Report at Sep. 26, 2015 MAC meeting
- Roadway De-Icing Workshop held in Libertyville, IL on Oct. 6 & 7, 2015
- Webcast on Checking In On Post-Construction Stormwater Management on Nov. 18, 2015
- Presentation from SMC on its Stream and Detention Basin Inventories at Dec. 9, 2015 MAC meeting
- Presentation on Post-Construction Stormwater BMP Maintenance at Dec. 9, 2015 MAC meeting

A.5 Classroom Education

Measurable Goal(s): Develop and compile information for stormwater educational kit for distribution upon request.

Provide materials and training on storm sewer inlet stenciling kits to teachers upon request.

Stormwater educational materials were compiled for use at several public education events that were held between March 1, 2015 and February 28, 2016, including:

- Rain Barrel, Compost Bin, and Native Plant Sale held on May 9, 2015
- Lake County Green Living Fair held in Libertyville, IL on Mar. 14, 2015
- Homeowners Association (HOA) Stormwater Maintenance Workshop held on May 19, 2015
- Riparian Landowner Workshop held in Beach Park, IL on May 26, 2015

- Loch Lomond Property Owners Association's Loch Fest held in Mundelein, IL on Aug. 8, 2015
- Village of Vernon Hills Public Works Week Celebration held in Vernon Hills, IL on Sep. 15, 2015

A.6 Other Public Education

*Measurable Goal(s): Maintain and update the portion of the SMC website dedicated to IEPA's NPDES Stormwater Program with resource materials such as model ordinances, case studies, brochures and web links.
Make "The Big Picture: Water Quality, Regulations & NPDES" presentation available to Lake County MS4s.*

**As new information and resource materials become available, they are posted to the SMC website and/or distributed directly to Lake County MS4s.
SMC continues to make available "The Big Picture: Water Quality, Regulations & NPDES" presentation to Lake County MS4s.**

B. Public Participation/Involvement

B.1 Public Panel

*Measurable Goal(s): Provide notice of public meetings on SMC website.
Track number of meetings conducted.*

**Notice of all public meetings continues to be provided on the SMC website and through direct mailings and e-mailings to distribution lists.
SMC tracked the number of Stormwater Management Committee Board (SMC) meetings, Technical Advisory Committee (TAC) meetings, Municipal Advisory Committee (MAC), and Watershed Management Board (WMB) meetings conducted during Year 13. According to records, there were 10 SMC meetings, 1 TAC meetings, 4 MAC meetings, and 1 WMB meeting conducted during this reporting period.**

B.3 Stakeholder Meeting

*Measurable Goal(s): Provide notice of stakeholder meetings on SMC website.
Track number of watershed planning committee meetings conducted.
Establish watershed planning committees for each new watershed planning effort.*

**Notice of all stakeholder meetings continues to be provided on the SMC website and through direct mailings and e-mailings to stakeholder lists.
SMC tracked the number of stakeholder meetings conducted for the various watershed planning committees during the reporting period. The list below summarizes the watershed planning committee meetings that were conducted during Year 13:**

- **North Branch Chicago River Planning Committee – 2**

- North Branch Watershed Consortium – 1
- Bull Creek/Bull's Brook Watershed Council – 3
- Buffalo Creek Clean Water Partnership – 3
- Tower Lake Drain Watershed Partnership – 10

SMC continues to establish and/or assist watershed planning committees for each new watershed planning effort.

B.6 Program Coordination

*Measurable Goal(s): Track number of MAC meetings conducted during Year 13.
Prepare annual report on Qualifying Local Program activities at end of Year 13.*

SMC tracked the number of Municipal Advisory Committee (MAC) meetings conducted during Year 13. According to records, there were 4 MAC meetings conducted during this reporting period.

The stormwater management activities that SMC performed as a QLP during Year 13 are described in the Annual Facility Inspection Report (i.e., Annual Report) template provided to Lake County MS4s. The stormwater management activities that SMC plans to perform as a QLP during Year 14 are described in Part E4 of the Annual Report template.

C. Illicit Discharge Detection and Elimination

C.2 Regulatory Control Program

Measurable Goal(s): Continue to enforce the countywide WDO.

SMC continues to enforce the countywide WDO.

C.10 Other Illicit Discharge Controls

Measurable Goal(s): Sponsor or co-sponsor and track the number of attendees at an Illicit Discharge Detection and Elimination workshop or other training workshop related to IEPA's NPDES Stormwater Program.

SMC sponsored or co-sponsored a number of workshops and events on stormwater-related topics between March 1, 2015 and February 28, 2016. Such workshops and events are described above.

D. Construction Site Runoff Control

D.1 Regulatory Control Program

Measurable Goal(s): Continue to enforce the countywide WDO.

Administer the Designated Erosion Control Inspector (DECI) program outlined by the WDO.

SMC continues to enforce the countywide WDO.

SMC continues to administer the Designated Erosion Control Inspector (DECI) program as outlined by the WDO.

D.2 Erosion and Sediment Control BMPs

Measurable Goal(s): Continue to enforce the countywide WDO.

Complete TRM update and work toward final approval and publication of the document.

SMC continues to enforce the countywide WDO.

The TRM is currently being updated to include guidance on the WDO amendments as well as ordinance administration and enforcement.

D.3 Other Waste Control Program

Measurable Goal(s): Enforce WDO provisions regarding the control of waste and debris at construction sites.

SMC continues to enforce the countywide WDO.

D.4 Site Plan Review Procedures

Measurable Goal(s): Track number of enforcement officers who have passed the exam.

Track number of communities that undergo a performance review.

Complete ordinance administration and enforcement chapter of TRM.

SMC continues to track the number of enforcement officers (EOs) who have passed the EO exam and have become EOs. According to records, as of the end of Year 13, there were 69 EOs in Lake County.

SMC last completed a cycle of the community re-certification process, which included a performance review of all 53 certified and non-certified communities, during a previous reporting period (i.e., Year 9). In accordance with the amended countywide WDO, the next cycle of the community re-certification process is scheduled to be completed in 2017.

The TRM is currently being updated to include guidance on the WDO amendments as well as ordinance administration and enforcement.

D.5 Public Information Handling Procedures

Measurable Goal(s): Track number of complaints received and processed related to soil erosion and sediment control.

SMC continues to track the number of complaints received and processed related to soil erosion and sediment control. According to records, between March 1, 2015

and February 28, 2016, 3 SE/SC complaints were received and processed by SMC staff.

D.6 Site Inspection/Enforcement Procedures

Measurable Goal(s): Track number of site inspections conducted by SMC.

SMC continues to track the number of site inspections conducted by SMC staff. According to records, between March 1, 2015 and February 28, 2016, 873 site inspections were conducted by SMC staff.

E. Post-Construction Runoff Control

E.2 Regulatory Control Program

Measurable Goal(s): Continue to enforce the countywide WDO.

SMC continues to enforce the countywide WDO.

E.3 Long Term O&M Procedures

Measurable Goal(s): Continue to enforce the countywide WDO.

SMC continues to enforce the countywide WDO.

E.4 Pre-Construction Review of BMP Designs

Measurable Goal(s): Continue to enforce the countywide WDO.

SMC continues to enforce the countywide WDO.

E.5 Site Inspections During Construction

Measurable Goal(s): Continue to enforce the countywide WDO.

SMC continues to enforce the countywide WDO.

E.6 Post-Construction Inspections

Measurable Goal(s): Continue to enforce the countywide WDO.

SMC continues to enforce the countywide WDO.

E.7 Other Post-Construction Runoff Controls

Measurable Goal(s): Conduct annual WMB meeting.

Contribute funding to flood reduction and water quality improvement projects, including stormwater retrofits, through the WMB.

The annual WMB meeting was held on Dec. 10, 2015.

At the annual WMB meeting, 13 flood reduction and water quality improvement projects, including stormwater retrofit projects, were selected to receive \$177,000 of funding through the WMB.

F. Pollution Prevention/Good Housekeeping

F.1 Employee Training Program

Measurable Goal(s): Provide list of available resources to MS4s.

*Sponsor or co-sponsor employee training workshops or events.
Make available the Excal Visual Municipal Storm Water
Pollution Prevention Storm Watch Everyday Best Management
Practices software.*

SMC continues to provide information on training opportunities and training resources to Lake County MS4s.

SMC sponsored or co-sponsored a number of workshops and events on stormwater-related topics between March 1, 2015 and February 28, 2016. Such workshops and events are described above.

SMC continues to make available the Excal Visual Storm Watch Municipal Stormwater Pollution Prevention software to Lake County MS4s. According to records, between March 1, 2015 and February 28, 2016, 1 MS4 borrowed the Excal Visual software.

F.5 Flood Management/Assess Guidelines

Measurable Goal(s): Track number of projects that are reviewed for multi-objective opportunities.

SMC continues evaluate all SMC-sponsored projects for multi-objective opportunities, such as flood control and water quality.

Part E3. QLP Information and Data Collection Results, Year 13

The QLP did not collect any monitoring data on behalf of Lake County's MS4s during Year 13. However, SMC has reviewed information presented by the Illinois EPA in the 2014 Illinois Integrated Water Quality Report and 303(d) List and has developed the brief "State of Lake County's Waters" report provided below. Please note that, as of the writing of this report, Illinois EPA has released a draft of the 2016 Illinois Integrated Water Quality Report and 303(d) List, but the 2014 report is the current Integrated Water Quality Report and 303(d) List for the State of Illinois.

State of Lake County's Waters April 2016

This brief report is based on information contained in the Illinois EPA's 2014 Illinois Integrated Water Quality Report and Section 303(d) List, dated March 24, 2014. Its purpose is to provide basic information to Lake County's MS4 on the condition of surface waters within Lake County. More detailed information about the condition of surface waters in Lake County can be found in the Illinois EPA's 2014 Illinois Integrated Water Quality Report and Section 303(d) List.

Streams

An analysis of data accompanying the Illinois EPA's 2014 Illinois Integrated Water Quality Report and Section 303(d) List shows that 183 stream miles in Lake County have been assessed by the Illinois EPA for attainment of at least one designated use. The degree of support (attainment) of a designated use in a particular stream segment is determined by the Illinois EPA through an analysis of various types of information, including biological, physicochemical, physical habitat, and toxicity data. When sufficient data are available, the Illinois EPA assesses each applicable designated use in a particular stream segment as Fully Supporting (good), Not Supporting (fair), or Not Supporting (poor). Waters in which at least one applicable use is not fully supported are called "impaired."

An analysis of data accompanying the Illinois EPA's 2014 Illinois Integrated Water Quality Report and Section 303(d) List shows that 139 stream miles (of the 183 stream miles that have been assessed) in Lake County are considered impaired by the Illinois EPA. These stream segments have been mapped and are shown in Figure E3.1.

Lakes

An analysis of data accompanying the Illinois EPA's 2014 Illinois Integrated Water Quality Report and Section 303(d) List shows that 170 inland lakes in Lake County have been assessed by the Illinois EPA for attainment of at least one designated use. As with streams, the degree of support (attainment) of a designated use in a particular lake is determined by the Illinois EPA through an analysis of various types of information, including biological, physicochemical, physical habitat, and toxicity data. When sufficient data are available, the Illinois EPA assesses each applicable designated use in a particular lake as Fully Supporting (good), Not Supporting (fair), or Not Supporting (poor). Waters in which at least one applicable use is not fully supported are called "impaired."

An analysis of data accompanying the Illinois EPA's 2014 Illinois Integrated Water Quality Report and Section 303(d) List shows that 135 inland lakes in Lake County are considered impaired by the Illinois EPA. These lakes have been mapped and are shown in Figure E3.1.

Lake Michigan

Lake Michigan is monitored by the Illinois EPA through the Lake Michigan Monitoring Program. Bordering Cook and Lake Counties, the State of Illinois has jurisdiction over approximately 1,526 square miles of open water, 13 harbors, and 64 shoreline miles of Lake Michigan.

196 square miles of open water of Lake Michigan, or about thirteen percent of the total open water located within Illinois, were assessed for the Illinois EPA's 2014 Illinois Integrated Water Quality Report and Section 303(d) List, and all 196 assessed square miles were rated as Fully Supporting for the following uses: aquatic life use, primary contact use, secondary contact use, and public and food processing water supply use. However, fish consumption use in all 196 assessed square miles of open water was rated as Not Supporting due to contamination from polychlorinated biphenyls (PCBs) and mercury. Additionally, aesthetic quality use in all 196 assessed square miles of open water was rated as Not Supporting due to exceedances of the Lake Michigan open water standard for total phosphorus. It should be noted that such exceedances do not necessarily indicate that there are offensive conditions in Lake Michigan due to excessive algal or aquatic plant growth.

4 of the 13 harbors along Illinois' Lake Michigan shoreline were assessed for the Illinois EPA's 2014 Illinois Integrated Water Quality Report and Section 303(d) List for several different designated uses. 66.7 percent of the square miles of harbors assessed for aesthetic quality (i.e., 0.12 of 0.18 sq. mi.) were rated as Fully Supporting, while the remaining 33.3 percent (i.e., 0.06 of 0.18 sq. mi.) were rated as Not Supporting. 97.6 percent of the square miles of harbors assessed for aquatic life use (i.e., 2.52 of 2.58 sq. mi.) were rated as Fully Supporting, while the remaining 2.4 percent (i.e., 0.06 of 2.58 sq. mi.) were rated as Not Supporting. 100 percent of the square miles of bays and harbors assessed for fish consumption (i.e., 2.62 of 2.62 sq. mi.), were rated as Not Supporting. Potential causes of impairment in the harbors of Lake Michigan located in Illinois include contamination from polychlorinated biphenyls (PCBs), mercury, bottom deposits, lead, zinc, cadmium, arsenic, phosphorus, copper, and chromium.

A portion of all 64 shoreline miles of Lake Michigan located in Illinois were assessed for the Illinois EPA's 2014 Illinois Integrated Water Quality Report and Section 303(d) List for several different designated uses. All 64 of the shoreline miles assessed for fish consumption and primary contact use were rated as Not Supporting due to contamination from polychlorinated biphenyls (PCBs) and mercury and bacterial contamination from *Escherichia coli* (*E. coli*) bacteria.

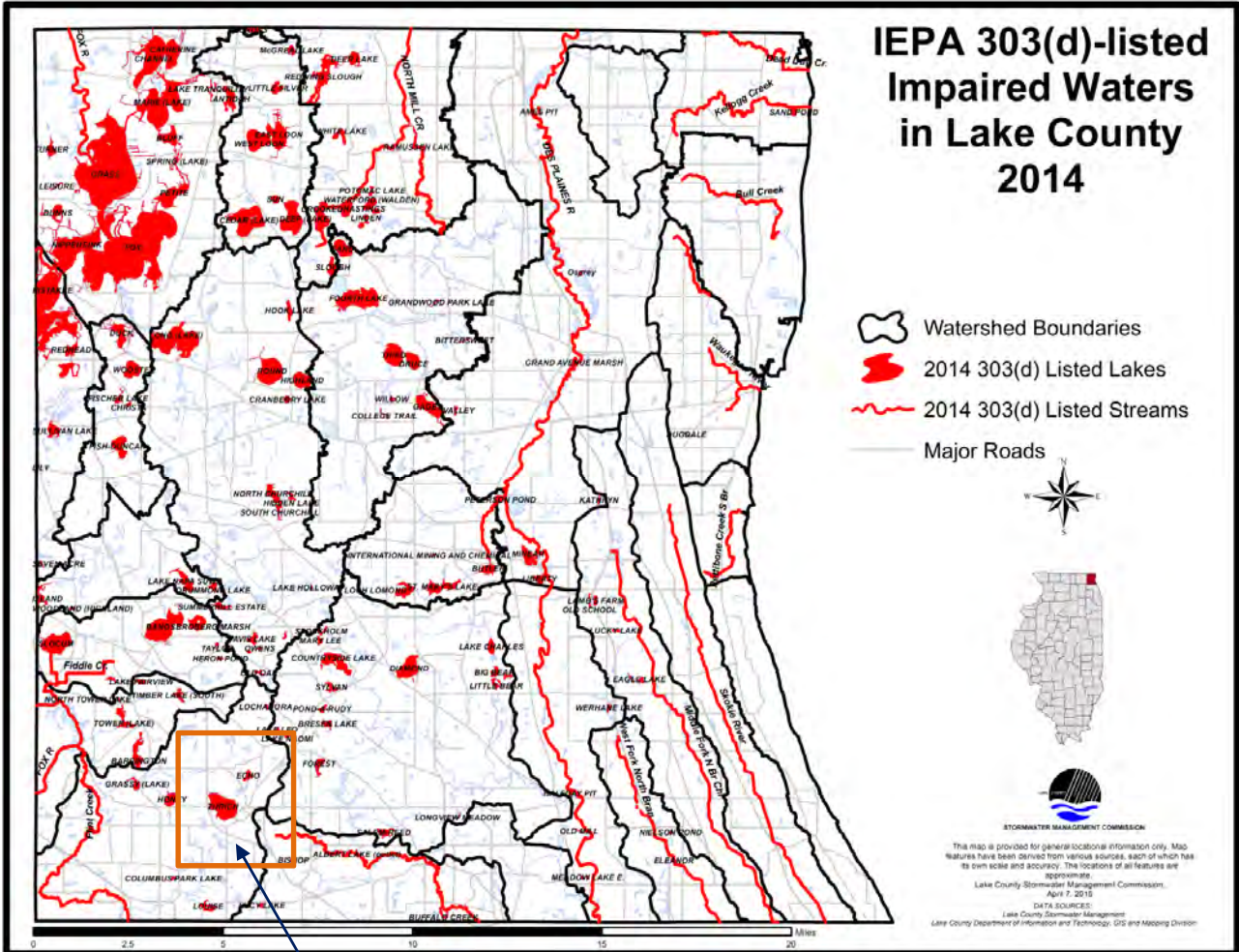


Figure E3.1

Village of Lake Zurich (approx. location)

Part E4. QLP Summary of Year 14 Stormwater Activities

The table below indicates the stormwater management activities that the QLP plans to undertake during Year 14. Additional information about the BMPs and measurable goals that the QLP will implement during Year 14 is provided in the section following the table.

Note: X indicates BMPs that will be implemented during Year 14

Year 14	
QLP	
A. Public Education and Outreach	
X	A.1 Distributed Paper Material
	A.2 Speaking Engagement
X	A.3 Public Service Announcement
X	A.4 Community Event
X	A.5 Classroom Education Material
X	A.6 Other Public Education
B. Public Participation/Involvement	
X	B.1 Public Panel
	B.2 Educational Volunteer
X	B.3 Stakeholder Meeting
	B.4 Public Hearing
	B.5 Volunteer Monitoring
X	B.6 Program Coordination
	B.7 Other Public Involvement
C. Illicit Discharge Detection and Elimination	
	C.1 Storm Sewer Map Preparation
X	C.2 Regulatory Control Program
	C.3 Detection/Elimination Prioritization Plan
	C.4 Illicit Discharge Tracing Procedures
	C.5 Illicit Source Removal Procedures
	C.6 Program Evaluation and Assessment
	C.7 Visual Dry Weather Screening
	C.8 Pollutant Field Testing
	C.9 Public Notification
X	C.10 Other Illicit Discharge Controls

Year 14	
QLP	
D. Construction Site Runoff Control	
X	D.1 Regulatory Control Program
X	D.2 Erosion and Sediment Control BMPs
X	D.3 Other Waste Control Program
X	D.4 Site Plan Review Procedures
X	D.5 Public Information Handling Procedures
X	D.6 Site Inspection/Enforcement Procedures
	D.7 Other Construction Site Runoff Controls
E. Post-Construction Runoff Control	
	E.1 Community Control Strategy
X	E.2 Regulatory Control Program
X	E.3 Long Term O&M Procedures
X	E.4 Pre-Const Review of BMP Designs
X	E.5 Site Inspections During Construction
X	E.6 Post-Construction Inspections
X	E.7 Other Post-Const Runoff Controls
F. Pollution Prevention/Good Housekeeping	
X	F.1 Employee Training Program
	F.2 Inspection and Maintenance Program
	F.3 Municipal Operations Storm Water Control
	F.4 Municipal Operations Waste Disposal
X	F.5 Flood Management/Assess Guidelines
	F.6 Other Municipal Operations Controls

Please note that IEPA has issued a new version of its General NPDES Permit No. ILR40 (Permit). The new version of the Permit became effective on March 1, 2016. According to the new Permit, MS4s have 180 days from the effective date of the Permit to comply with any changes or new provisions contained in the Permit.

During Year 14, SMC plans to continue to perform a variety of stormwater management activities across the county, as described in more detail below. In addition to the stormwater management activities described below, SMC will work to update and enhance its stormwater management activities, as needed, over the coming months, to assist Lake County MS4s in meeting the requirements of the new Permit.

A. Public Education and Outreach

SMC will continue to support Lake County MS4s in the development and implementation of their stormwater management programs by performing activities related to the Public Education and Outreach minimum control measure, as described below.

A.1 Distributed Paper Material

SMC compiles, develops, and distributes throughout Lake County a variety of materials related to stormwater management. SMC has produced a number of pamphlets and brochures related to stormwater management and prepares a quarterly newsletter, "Mainstream," as well as an Annual Report, which highlight successful stormwater management activities conducted throughout Lake County. SMC also prepares project fact sheets that provide information about ongoing and recently completed stormwater management projects. In addition, SMC has developed or collaborated on a number of manuals related to stormwater management, such as "Riparian Areas Management: A Citizen's Guide," "A Citizen's Guide to Maintaining Stormwater Best Management Practices," and the "Streambank Stabilization Manual," and will continue to develop or collaborate on such manuals or manual updates on an as-needed basis.

Measurable Goal(s): Distribute informational materials from "take away" rack at SMC. Upon request, distribute informational materials directly to Lake County MS4s for local distribution.

A.2 Speaking Engagement

SMC provides educational presentations related to IEPA's NPDES Stormwater Program on a regular basis at Municipal Advisory Committee (MAC) meetings. Upon request, SMC will provide educational presentations related to IEPA's NPDES Stormwater Program to Lake County MS4s.

Measurable Goal(s): Provide educational presentations related to IEPA's NPDES Stormwater Program at MAC meetings. Upon request, provide educational presentations related to IEPA's NPDES Stormwater Program (e.g., "The Big Picture: Water Quality, Regulations & NPDES") to Lake County MS4s.

A.3 Public Service Announcement

A public service announcement related to IEPA's NPDES Stormwater Program will be included in SMC's Quarterly Newsletter, "Mainstream," at least once each year. SMC will coordinate with the Lake County Department of Transportation (LCDOT) to post watershed identification signage in watersheds where watershed planning activities have occurred or are occurring.

*Measurable Goal(s): Include public service announcement related to IEPA's NPDES Stormwater Program in its quarterly newsletter, "Mainstream," at least once each year.
Post watershed identification signage in cooperation and collaboration with LCDOT.*

A.4 Community Event

SMC sponsors and co-sponsors educational a technical training workshops on a variety of stormwater management-related topics. Each year, SMC will sponsor or co-sponsor at least one workshop on a topic related to IEPA's NPDES Stormwater Program, such as soil erosion and sediment control, illicit discharge detection and elimination, or stormwater best management practices (BMPs) that can be used to protect and improve water quality.

Measurable Goal(s): Sponsor or co-sponsor workshop on a topic related to IEPA's NPDES Stormwater Program.

A.5 Classroom Education Material

Upon request, SMC will contribute to the development and compilation of material for inclusion in a stormwater education kit that can be distributed to local students and teachers and/or other local stakeholders. Additionally, upon request, SMC will provide information, materials, and training to local students and teachers and/or other local stakeholders interested in conducting storm drain stenciling.

*Measurable Goal(s): Upon request, develop and compile materials for inclusion in a stormwater education kit.
Upon request, provide information, materials, and training to local students and teachers and/or stakeholders interested in conducting storm drain stenciling.*

A.6 Other Public Education

SMC maintains a website that contains a variety of materials and resources related to stormwater management. The website includes webpages such as "National Pollutant Discharge Elimination System Stormwater Program," "Best Management Practices," "Projects," "Publications," "Watershed Management Plans," "Partnerships," and "Advisory Committees." These webpages provide information about IEPA's NPDES Stormwater Program, provide information about stormwater best management practices (BMPs), allow for download of stormwater management-related publications and documents, provide notices of upcoming meetings and ongoing projects, and provide links to a number of other stormwater management-related resources.

Measurable Goal(s): Maintain and update the portion of the SMC website dedicated to IEPA's NPDES Stormwater Program with resources such as model ordinances, case studies, brochures, and links.

B. Public Participation/Involvement

SMC will continue to support Lake County MS4s in the development and implementation of their stormwater management programs by performing activities related to the Public Participation/Involvement minimum control measure, as described below.

B.3 Stakeholder Meeting

SMC is actively involved in watershed planning throughout Lake County. SMC believes that the watershed planning process cannot happen and will not be successful without the input, interest, and commitment of the watershed stakeholders. Watershed stakeholders may include municipalities, townships, drainage districts, homeowner associations, lakes management associations, developers, landowners, and local, county, state, and federal agencies.

*Measurable Goal(s): Provide notice of stakeholder meetings on SMC website.
Track number of watershed committee meetings conducted.
Establish watershed planning committees for each new watershed planning effort.*

B.4 Public Hearing

SMC coordinates and conducts public meetings as well as committee meetings that are open to the public. A monthly Stormwater Management Commission meeting is open to the public and involves the SMC Board of Commissioners, which includes six municipal representatives and six county board members.

The Technical Advisory Committee (TAC) was created in 1992 to assist in the development, review, and revision of the Watershed Development Ordinance (WDO) and the associated administrative policies and procedures. TAC is made up of representatives from the development, environmental, municipal, and consulting engineering fields. TAC meetings are held monthly or on an as-needed basis.

The Municipal Advisory Committee (MAC) is made up of municipal, township, drainage district, consulting firm, and county representatives. MAC has worked to discuss, coordinate, and collaborate on the implementation of IEPA's NPDES Stormwater Program. MAC will continue to meet quarterly or as needed to assist Lake County MS4s with the implementation of IEPA's Stormwater Program.

The Watershed Management Board (WMB) meets annually to make recommendations on stormwater BMP project funding. WMB members include chief municipal elected officials, township supervisors, drainage district chairs, and county board members from each district within each of Lake County's four major watersheds.

*Measurable Goal(s): Provide notice of public meetings on SMC website.
Track number of meetings conducted.*

B.6 Program Coordination

Consistent with Lake County's comprehensive, countywide approach to stormwater management, SMC serves as a Qualifying Local Program (QLP) for all Lake County MS4s. In this role, in 2002, SMC proactively formed the Municipal Advisory Committee (MAC) to provide a forum for representatives of local MS4s, which include municipalities, townships, and drainage districts, to discuss, among other topics, the implementation of IEPA's NPDES Stormwater Program. SMC will continue to facilitate quarterly MAC meetings and will continue to provide general support to Lake County MS4s as they continue to develop and implement their stormwater management programs. SMC will prepare an annual report on its stormwater management activities and will provide guidance to Lake County MS4s in preparing their own annual reports.

*Measurable Goal(s): Track number of MAC meetings conducted.
Prepare annual report on Qualifying Local Program stormwater management activities.
Prepare template for use by Lake County MS4s in creating their own annual reports.*

C. Illicit Discharge Detection and Elimination

SMC will continue to support Lake County MS4s in the development and implementation of their stormwater management programs by performing activities related to the Illicit Discharge Detection and Elimination minimum control measure, as described below. Note, however, that the primary responsibility for the implementation of the Illicit Discharge Detection and Elimination minimum control measure lies with the MS4.

C.2 Regulatory Control Program

SMC provides local MS4s with model and example illicit discharge ordinances that prohibit all non-stormwater discharges, including illegal dumping, to the storm sewer system. Additionally, the WDO includes provisions that prohibit illicit discharges to the storm sewer system during construction (i.e., prior to final site stabilization) on development sites.

*Measurable Goal(s): Provide model and example illicit discharge ordinances to Lake County MS4s.
Continue to administer and enforce the WDO.*

C.10 Other Illicit Discharge Controls

SMC regularly sponsors and co-sponsors educational and technical training workshops on a variety of stormwater management-related topics. Each year, SMC will sponsor or co-sponsor an illicit discharge detection and elimination workshop or other training workshop related to IEPA's NPDES Stormwater Program and track the number of attendees that attend the workshop.

Additionally, as part of its public education and outreach efforts, SMC distributes informational materials throughout Lake County about the hazards associated with illegal discharges and the improper disposal of waste.

Measurable Goal(s): Sponsor or co-sponsor and track the number of attendees at an Illicit Discharge Detection and Elimination workshop or other training workshop related to IEPA's NPDES Stormwater Program. Distribute informational materials about the hazards of illicit discharges and illegal dumping from "take away" rack at SMC and SMC website.

D. Construction Site Runoff Control

Lake County has adopted a countywide Watershed Development Ordinance (WDO) that establishes the minimum stormwater management requirements for development in Lake County, including requirements for construction site runoff control. SMC will continue to support Lake County MS4s in the implementation of the Construction Site Runoff Control minimum control measure by administering and enforcing the WDO and performing other stormwater management activities, as described below. Note, however, that the primary responsibility for the implementation of the Construction Site Runoff Control minimum control measure in certified communities (i.e., communities certified by SMC to administer and enforce the provisions of the WDO) lies with the MS4.

D.1 Regulatory Control Program

The WDO is the regulatory mechanism that requires the use of soil erosion and sediment controls on development sites throughout Lake County. The soil erosion and sediment control provisions of the WDO are included in Article IV, Section B.1.j. of the ordinance. At a minimum, these standards apply to any development project that hydrologically disturbs 5,000 square feet of land or more.

SMC has also created a Designated Erosion Control Inspector (DECI) program. The purpose of the program is to facilitate positive communication between the permit issuing agency, whether such agency be SMC or a certified community, and the permit holder, by creating a single point of contact for the discussion and resolution of site soil erosion and sediment control issues and concerns. Furthermore, the program is intended to improve site conditions, minimize environmental impacts, and educate contractors, developers, and inspectors about the use of soil erosion and sediment control BMPs. It is worth noting that the DECI program was designed to closely mirror the inspection requirements of IEPA's General NPDES Permit No. ILR10.

Measurable Goal(s): Continue to administer and enforce the WDO. Continue to administer the Designated Erosion Control Inspector (DECI) program outlined by the WDO.

D.2 Erosion and Sediment Control BMPs

Article IV, Section B.1.j of the WDO specifies the soil erosion and sediment control measures that must be used in conjunction with any land disturbing activities conducted on a

development site. It specifies the use of a variety of soil erosion and sediment control BMPs, including: minimize soil disturbance; protect adjoining properties from erosion and sedimentation; complete installation of soil erosion and sediment control features prior to commencement of hydrologic disturbance; stabilize disturbed areas within 7 days of active disturbance; avoid disturbance of streams whenever possible; use controls that are appropriate for the size of the tributary drainage area; protect functioning storm sewers from sediment; prevent sediment from being tracked onto adjoining streets; limit earthen embankments to slopes of 3H:1V; identify soil stockpile areas; and, utilize statewide standards and specifications as guidance for soil erosion and sediment control.

SMC has also prepared a Technical Reference Manual (TRM) to accompany the WDO. The TRM is used to guide the creation of development plans that are in compliance with the provisions of the WDO and provides detailed information on the use of soil erosion and sediment control BMPs. It is currently being updated by the Technical Advisory Committee (TAC).

*Measurable Goal(s): Continue to administer and enforce the WDO.
Continue to work on updates to the Technical Reference Manual (TRM) and toward publication of the updated document.*

D.3 Other Waste Control Program

Article IV, Section B.1.j. of the WDO includes provisions related to the control of waste and debris during construction on development sites.

Measurable Goal(s): Continue to administer and enforce the provisions of the WDO related to the control of waste and debris during construction on development sites.

D.4 Site Plan Review Procedures

A community's designated enforcement officer is responsible for reviewing and permitting development plans and for administering and enforcing the provision of the WDO. Within certified communities (i.e., communities certified by SMC to administer and enforce the provisions of the WDO), responsibility for reviewing and permitting development plans and for administering and enforcing the provisions of the WDO lies with the MS4; within non-certified communities, the designated enforcement officer is SMC's chief engineer. All designated enforcement officers must pass an exam in order to qualify to act as such. SMC administers this enforcement officer program, providing training on an as-needed basis to all enforcement officers to assist them in passing the exam, and maintains an up-to-date list identifying each community's designated enforcement officer. In addition to administering the enforcement officer program, SMC periodically reviews each community's WDO administration and enforcement records, using the results of such review to evaluate the performance of certified communities and designated enforcement officers.

SMC has also prepared a Technical Reference Manual (TRM) to accompany the WDO. The TRM is used to guide the creation of development plans that are in compliance with the provisions of the WDO and provides additional guidance on the administration and

enforcement of the ordinance. It is currently being updated by the Technical Advisory Committee (TAC).

*Measurable Goal(s): Administer the Enforcement Officer (EO) program outlined by the WDO.
Maintain an up-to-date list identifying each community's designated enforcement officer.
Periodically review each community's WDO administration and enforcement records.
Continue to work on updates to the Technical Reference Manual (TRM) and toward publication of the updated document.*

D.5 Public Information Handling Procedures

SMC provides a number of opportunities for the receipt and consideration of information submitted by the public. SMC's Citizen Inquiry Response System (CIRS) documents and tracks the resolution of problems and complaints reported by the public. SMC's website provides information on "who to call" for various stormwater-related problems and concerns. An Interagency Coordination Agreement between SMC, the US Army Corps of Engineers, and the Natural Resources Conservation Service specifies that if any of these agencies receive a report of a soil erosion and sediment control issue, they will relay such report to SMC. SMC will then investigate the report and prescribe appropriate corrective actions, sharing the results of such investigation with the property owner and any applicable local, state, or federal agencies. Within certified communities, such investigations are coordinated with the community's designated enforcement officer.

Measurable Goal(s): Document and track the number of soil erosion and sediment control-related complaints received and processed by SMC.

D.6 Site Inspection/Enforcement Procedures

Article VI of the WDO contains both recommended and minimum requirements for the inspection of development sites. Within certified communities, the community's designated enforcement officer is responsible for conducting these inspections; within certified communities, SMC's chief engineer is responsible for conducting these inspections. Per the ordinance, these inspections may be conducted by a community's designated enforcement officer at any stage in the construction process. For major developments, as defined by the WDO, the enforcement officer conducts site inspections, at a minimum, upon completion of installation of soil erosion and sediment controls, prior to the start of any other land disturbing activities, and after final stabilization and landscaping, prior to the removal of soil erosion and sediment controls.

Article VII of the WDO specifies the legal actions that may be taken and the penalties that may be imposed if the provisions of the WDO are violated. If development activities on a development site are not in compliance with the requirements of the WDO, the enforcement officer may issue a stop work order on all development activity on the development site or on the development activities that are in direct violation of the WDO. In addition, failure to

comply with any of the requirements of the WDO constitutes a violation of the WDO, and any person convicted of violating the WDO may be fined.

Measurable Goal(s): Document and track the number of site inspections conducted by SMC.

E. Post-Construction Runoff Control

As described above, Lake County has adopted a countywide Watershed Development Ordinance (WDO) that establishes the minimum stormwater management requirements for development in Lake County, including requirements for post-construction runoff control. SMC will continue to support Lake County MS4s in the implementation of the Post-Construction Runoff Control minimum control measure by administering and enforcing the WDO and performing other stormwater management activities, as described below. Note, however, that the primary responsibility for the implementation of the Post-Construction Runoff Control minimum control measure in certified communities (i.e., communities certified by SMC to administer and enforce the provisions of the WDO) lies with the MS4.

E.2 Regulatory Control Program

The WDO requires all applicants to adopt stormwater management strategies for controlling post-construction stormwater runoff on development sites. As outlined in Article IV, Section B.1 of the WDO, all applicants must adopt stormwater management strategies that minimize increases in stormwater runoff rates, volumes, and pollutant loads from development sites. Proposed stormwater management strategies must address the runoff volume reduction requirements described in Article IV, Section B.1.d. of the WDO and must include appropriate stormwater BMPs to address the other applicable post-construction runoff control requirements of the WDO.

Measurable Goal(s): Continue to administer and enforce the WDO.

E.3 Long Term O&M Procedures

The WDO requires that maintenance plans be developed for all stormwater management systems designed to serve major developments, as defined by the WDO. Such maintenance plans must include: a description of all maintenance tasks; an identification of the party or parties responsible for performing such maintenance tasks; a description of all permanent maintenance easements or access agreements, overland flow paths, and compensatory storage areas; and, a description of dedicated sources of funding for the required maintenance. The WDO also requires that all stormwater management systems be located within a deed or plat restriction (e.g., easement) to ensure that the system remains in place in perpetuity and that access to the system is maintained in perpetuity for inspection and maintenance purposes.

Measurable Goal(s): Continue to administer and enforce the WDO.

E.4 Pre-Construction Review of BMP Designs

As described above, a community's designated enforcement officer is responsible for reviewing and permitting development plans and for administering and enforcing the provisions of the WDO. This includes a review of the stormwater BMPs that will be used to meet the post-construction runoff control requirements of the WDO.

Measurable Goal(s): Continue to administer and enforce the WDO.

E.5 Site Inspections During Construction

As described above, Article VI of the WDO contains both recommended and minimum requirements for the inspection of development sites. Per the ordinance, these inspections may be conducted by a community's designated enforcement officer at any stage in the construction process. For major developments, as defined by the WDO, the enforcement officer conducts site inspections, at a minimum, upon completion of installation of soil erosion and sediment controls, prior to the start of any other land disturbing activities, and after final stabilization and landscaping, prior to the removal of soil erosion and sediment controls.

Measurable Goal(s): Continue to administer and enforce the WDO.

E.6 Post-Construction Inspections

As described above, Article VI of the WDO contains both recommended and minimum requirements for the inspection of development sites. Per the ordinance, these inspections may be conducted by a community's designated enforcement officer at any stage in the construction process, including after final stabilization and landscaping, after the removal of soil erosion and sediment controls. For major developments, as defined by the WDO, the enforcement officer conducts site inspections, at a minimum, upon completion of installation of soil erosion and sediment controls, prior to the start of any other land disturbing activities, and after final stabilization and landscaping, prior to the removal of soil erosion and sediment controls.

Measurable Goal(s): Continue to administer and enforce the WDO.

E.7 Other Post-Construction Runoff Controls

Through the Watershed Management Board (WMB), SMC provides partial funding for flood damage reduction and surface water quality improvement projects. The WMB, which includes representatives from the Lake Michigan, North Branch of the Chicago River, Fox River, and Des Plaines River watersheds, meets annually to review potential projects and to make recommendations on stormwater BMP project funding. Members of the WMB include chief municipal elected officials, township supervisors, drainage district chairmen, and county board members from each district found within each of Lake County's four major watersheds. The goal of the WMB program is to maximize opportunities for local units of government and other groups to have input and influence on the solutions used to address local stormwater management problems. Previous WMB-funded projects have reduced flooding, improved surface water quality, and enhanced existing stormwater management facilities throughout Lake County.

*Measurable Goal(s): Conduct annual WMB meeting.
Contribute funding to flood damage reduction and water quality improvement projects through the WMB.*

F. Pollution Prevention/Good Housekeeping

QLP: SMC will continue to support Lake County MS4s in the development and implementation of their stormwater management programs by performing activities related to the Pollution Prevention/Good Housekeeping minimum control measure, as described below. Note, however, that the primary responsibility for the implementation of the Pollution Prevention/Good Housekeeping minimum control measure lies with the MS4.

F.1 Employee Training Program

SMC will assist Lake County MS4s with the development and implementation of their employee training programs by maintaining a list of known employee training resources and opportunities, making available a software-based employee training program, and providing, upon request, technical assistance to local MS4s in developing and implementing their employee training programs. In addition, each year, SMC will sponsor or co-sponsor a training workshop related to pollution prevention/good housekeeping or other training workshop related to IEPA's NPDES Stormwater Program.

*Measurable Goal(s): Maintain a list of known employee training resources and opportunities.
Make available the Excal Visual Storm Watch: Municipal Storm Water Pollution Prevention software-based employee training program.
Sponsor or co-sponsor a training workshop related to pollution prevention/good housekeeping or other training workshop related to IEPA's NPDES Stormwater Program.*

F.5 Flood Management/Assess Guidelines

In working toward meeting its primary goals of flood damage reduction and surface water quality improvement, SMC follows a set of stormwater management policies that were created to define its roles and responsibilities for stormwater management in Lake County. One of these policies is to integrate multi-objective opportunities (e.g., flood damage reduction, surface water quality improvement, environmental enhancement) into SMC-sponsored projects. In accordance with this policy, SMC will evaluate all SMC-sponsored projects multi-objective opportunities.

Measurable Goal(s): Track number of SMC-sponsored projects that are reviewed for multi-objective opportunities.

