

Village of Lake Zurich Board Meeting

January 19th, 2026

Lake Zurich Key Parks Master Plan



Goals & Objectives

1. Review existing parks and assess age of amenities, needs within the village, sustainability, accessibility, and green infrastructure opportunities.
2. Create concept plans for 5 key parks around Lake Zurich:
 - Kuechmann Arboretum
 - Oak Ridge Park
 - Old Mill Grove Park
 - Staples Park
 - Zurites Park
3. Create a final planning document inclusive of all community feedback that highlights sustainability strategies and meets village standards.
4. Develop a comprehensive budget and phasing strategy that maximizes grant contributions over the next 10 years.



Team



Process



Phase 1: Park Inventories

KUECHMANN ARBORETUM

626 North Old Rand Road Lake Zurich, IL | 7.8 acres
Pin #: 1418402010, 1418217016, 1418402052, 1418402024

Overview

Kuechmann Arboretum is recognized as a Level I arboretum in Illinois. There are 25 different species of trees, 56 of which are over 150 years old. Within the arboretum is a nature play area called Kuechmann Cove, which was donated by the Ancient Oaks Foundation. Other amenities include a parking lot, picnic area, and nature trails. Additional Eagle Scout projects exist within the park including bat boxes that provide artificial nesting sites and shelter for bats.

Site Aerial



Site Images



AMENITIES & SITE ANALYSIS

Parking Lot - 2020

Qty	Amenity	Condition
9	Stalls	Good
-	1 ADA Stall	
-	Surfacing	Good
-	Asphalt	

Trails - 2017

Qty	Amenity	Condition
-	Mulch Trail	Fair
-	Boardwalk Trail	Good
2	Benches	Good
-	Wood, w/ back	

Kuechmann Cove - 2020

Qty	Amenity	Condition
1	Discovery Lab	Good
-	Various Painted Steppers	Good
1	Wood Tunnel	Good
1	Wooden See Saw	Good
1	Tree Sculpture	Good
1	Music Play	Good
3	Tables	Good
-	Wood	
1	Canoe	Good
1	Tent	Good
-	Surfacing	Fair
-	Engineered Wood Fiber	
1	Bench	Good
-	Wood w/ back	

Outdoor Classroom/Picnic Area

Qty	Amenity	Condition
5	Picnic Tables	Good-Fair
-	(2) wood & metal, (3) recycled plastic ADA	
3	Bench	Poor
-	Wood, no back	

Lake View Point

Qty	Amenity	Condition
-	Pavement	Fair
-	Concrete slab	

Other

Qty	Amenity	Condition
2	Litter receptacles	Good
-	Steel Drum w/ Lid	
1	Park Name Sign	Excellent
1	Information Kiosk	Good

Natural Features

- Bat Habitats
- Tree Identification Markers
- Natural Plantings currently maintained by Ancient Oaks

Recreation

- Wood chip path requires heavy maintenance and does not meet accessibility code.
- Kuechmann Cove play equipment is in good condition, surfacing levels are inconsistent

Site Amenities

- Outdoor classroom seating shows signs of wear and is not accessible
- View to the lake is not accessible and is overgrown with vegetation

Community Survey Top Priorities

- Restore access to waterfront
- Improve existing trail system
- Increase habitat restoration efforts
- Add restroom facilities

Phase 2: Stakeholder Meetings

Major Findings

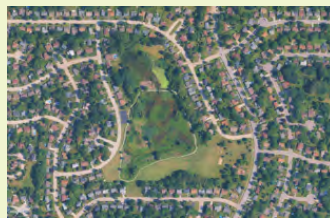
Kuechmann



Oak Ridge



Old Mill Grove



Staples



Zurites



Needs to be Improved

- ADA Access
- Invasive Species
- **Trail connections** and **accessibility**

- More **Shade**
- New Boardwalk
- Play Equipment
- Parking

- **Trail connections**
- Playground
- Drainage
- Lacking **Accessibility**
- Invasive Species

- **Restrooms**
- Concessions
- Backstops
- Lighting

- More **Shade**
- Drainage
- Need **Restroom**

Favorite Proposed Elements

- Tree House
- Discovery Stream
- Fishing Pier
- **Habitat Restoration**

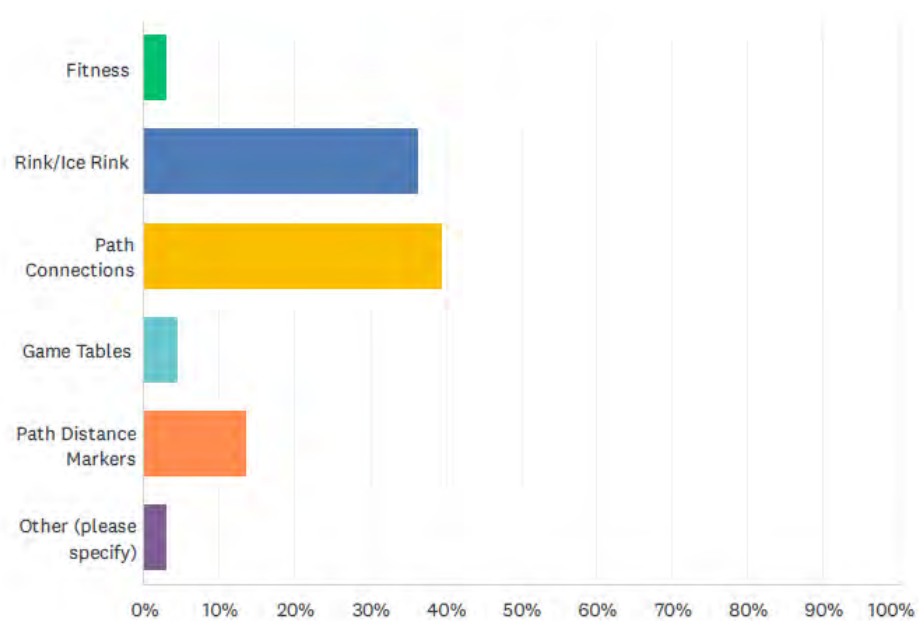
- Expanded Trails
- Pickleball
- Restroom
- **Habitat Restoration**
- Wetland Playground




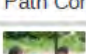
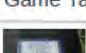
- Pump Track
- Walking Path
- **Habitat Restoration**
- STEM Playground (Dinosaurs)

- Batting Cages
- Restroom Renovation
- Outdoor Classroom
- Sports Playground

- Pump Track
- Rugby/Flag Football
- Picnic Shelter
- **Habitat Restoration**

Stakeholder Meetings: Ice Ribbon Interest



ANSWER CHOICES	RESPONSES
 Fitness	3.03%
 Rink/Ice Rink	36.36%
 Path Connections	39.39%
 Game Tables	4.55%
 Path Distance Markers	13.64%
Other (please specify)	3.03%



Phase 2: Statistically Valid Community Wide Survey

Purpose:



To gather objective feedback to help the Village create a master plan to assess and provide a strategic framework for five parks



To assist in the Village taking a resident-driven approach to planning



To develop priorities for investment based on our Priority Investment Ratings Analysis

Methodology

Survey Description

- Seven-page survey + a cover letter were mailed to random sample of households in the Village

Method of Administration

- By mail and online with options to complete the survey over the phone

Sample Size

- 318 completed surveys
- 52 non-random surveys completed

Margin of Error

- +/- 5.5% at the 95% level of confidence

What to Know

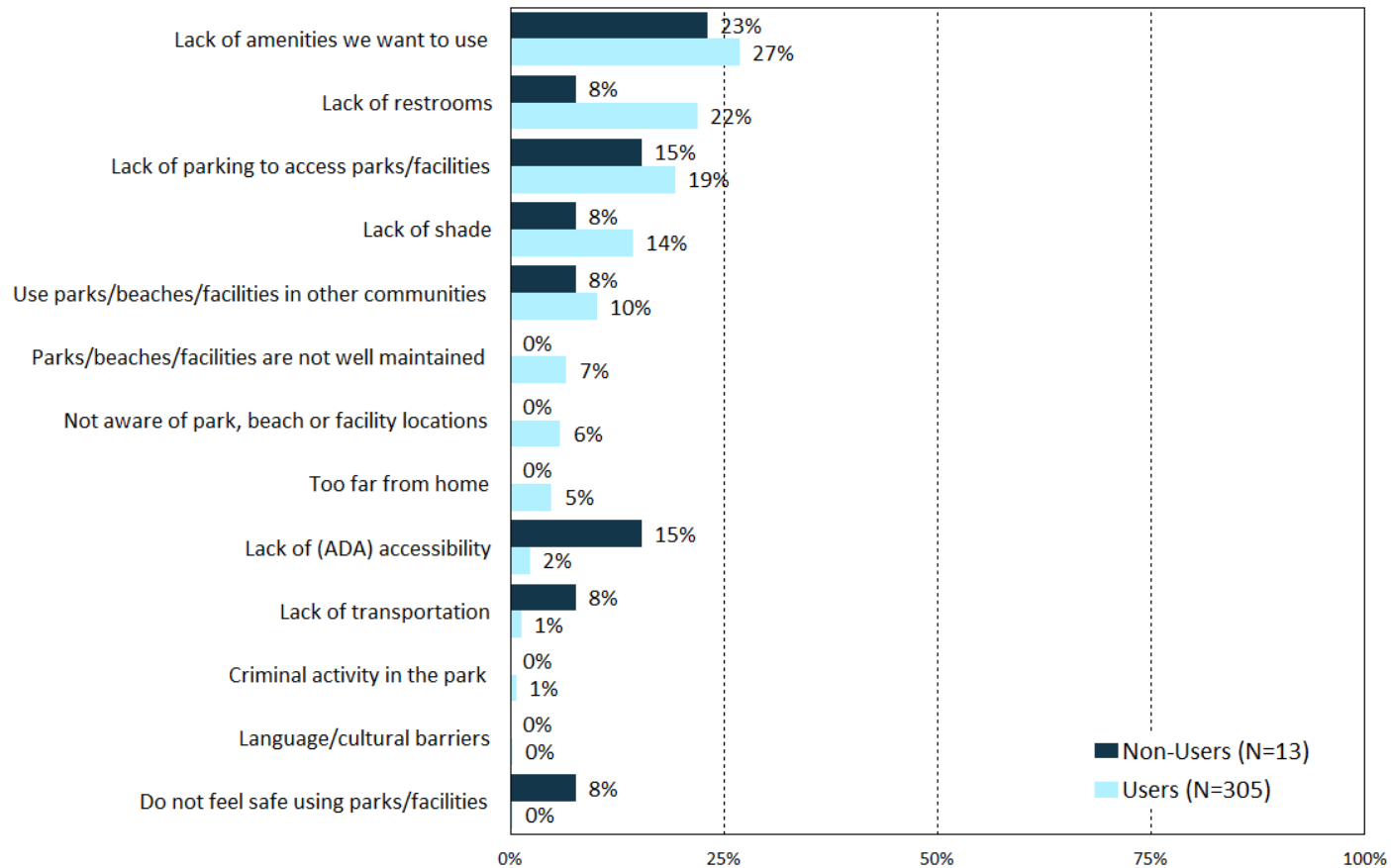
- 96% of respondents visited a Village of Lake Zurich park, beach, and/or recreation facility during the past 12 months
 - *National Average: 81%*
- The Ela Public Area Library (88%), Lake County Forest Preserve (65%), and neighboring park districts/departments (53%) are the most used organizations beyond the Village
- 87% of respondents believe it is “very important” and another 11% believe it is “somewhat important” for the Village to provide high quality parks, recreation facilities, programs, and events



Key Take Aways: Overall

Q2c. Please CHECK ALL of the following reasons that prevent you or members of your household from visiting Village of Lake Zurich parks, beaches, and recreation facilities more often.

by percentage of respondents (excluding "not provided")



Although barriers to usage do exist, they are minor and do not impact a large majority of respondents

Key Take Aways: 2025 Importance- Satisfaction Rating

Major Categories of Services

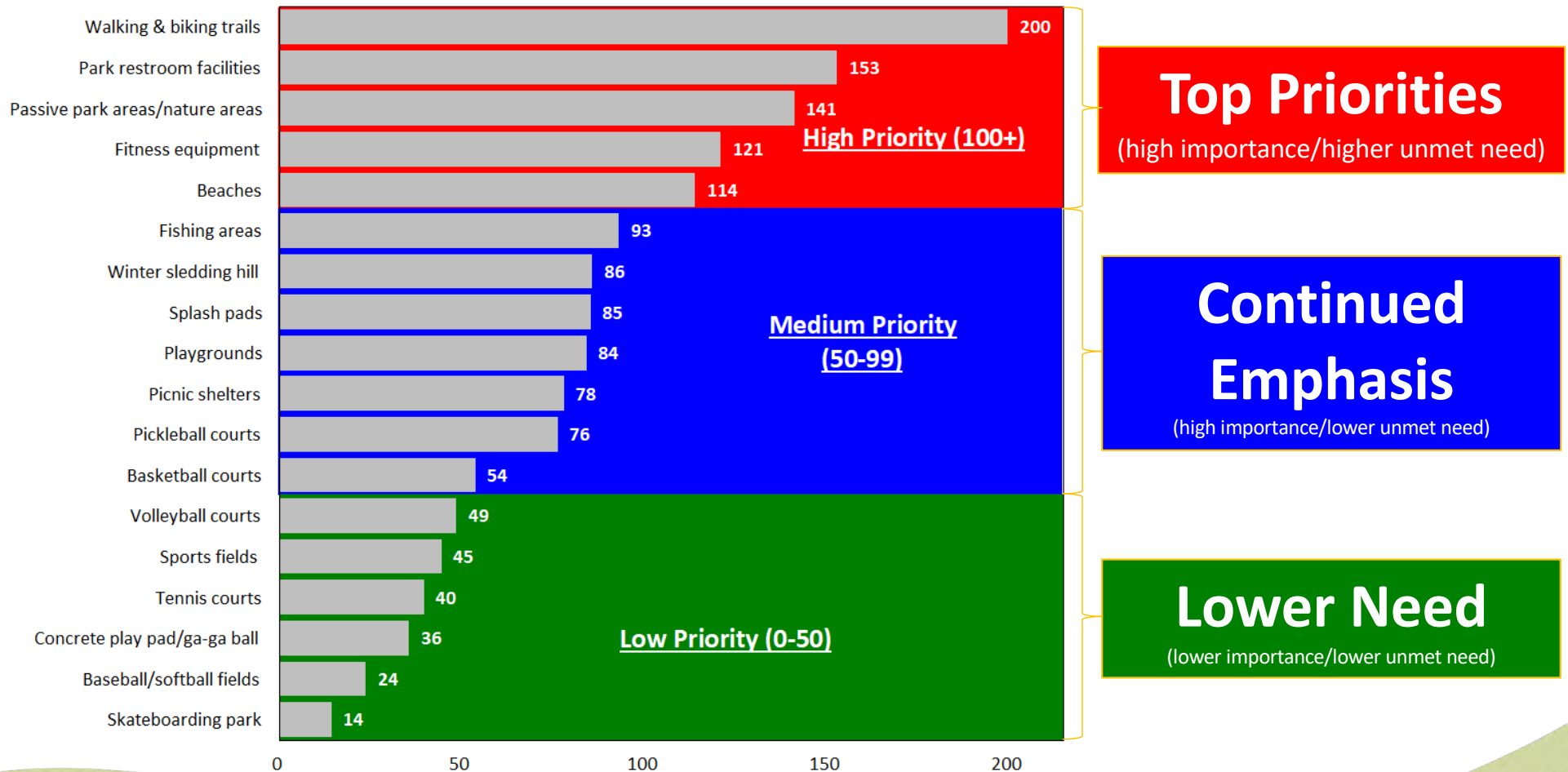
Category of Service	Most Important %	Most Important Rank	Satisfaction %	Satisfaction Rank	Importance-Satisfaction Rating	I-S Rating Rank
Quality of programs for adults	24%	3	42%	18	0.1386	1
Variety of programs offered	21%	6	49%	15	0.1082	2
Variety of different types of parks in the community	23%	4	57%	14	0.0978	3
Special event offerings (Farmers Markets, Rock the Block, Miracle on Main)	33%	2	76%	7	0.0816	4
Quality of programs for families with children	22%	5	65%	11	0.0772	5
Fees charged for recreation programs and services	14%	9	48%	16	0.0715	6
Maintenance of parks	38%	1	84%	2	0.0632	7
Program schedule (time/day)	10%	12	47%	17	0.0553	8
Availability of information about programs/services/facilities/parks/events	15%	8	67%	10	0.0494	9
Overall value that your household receives from parks	11%	11	68%	9	0.0359	10
Maintenance of trails	17%	7	80%	4	0.0349	11
Security in parks	13%	10	77%	5	0.0306	12
Number of parks in the community	10%	13	82%	3	0.0188	13
Ease of registering for classes and services offered	4%	17	59%	13	0.0152	14
User friendliness of the website	4%	16	63%	12	0.0146	15
Security on trails	5%	14	73%	8	0.0144	16
How close parks are located to your home	5%	15	85%	1	0.0066	17
Park and recreation staff customer service	2%	18	76%	6	0.0036	18

The analysis weighs both the Satisfaction and Importance Ratings. Items with a rating above .100 are high priority

The analysis weighs both the Satisfaction and Importance Ratings. Items with a rating above .100 are high priority

Key Take Aways: Facility & Amenity Priorities

Top Priorities for Investment for Parks and Recreation Facilities/Amenities Based on Priority Investment Rating



Phase 2: Community Wide Survey Park Priorities

Kuechmann



1. Restore Access to the waterfront
2. Improve Trail System
3. Increase Habitat Restoration efforts
4. Add restrooms facilities
5. Expand Nature Play
6. Add Shade Structure
7. Add Wayfinding signage
8. Improve accessibility

Oak Ridge



1. Improve existing trail systems
2. Habitat Restoration
3. Restore access to the waterfront
4. Add Restroom Buildings
5. Improve Playground
6. Improve accessibility
7. Add Outdoor Fitness
8. Improve Parking

Old Mill Grove



1. Improve existing trail system
2. Improve existing park infrastructure
3. Habitat Restoration
4. Add Restroom buildings
5. Improve Playground
6. Develop new bike park facility/ pump track
7. Improve accessibility
8. Add new wellness opportunities

Staples



1. Improve existing park infrastructure
2. Improve and expand restroom facility
3. Improve existing trail system
4. Improve existing playground
5. Develop Roller hockey rink/ ice rink
6. Add outdoor fitness
7. Renovate basketball
8. Improve baseball fields

Zurites



1. Habitat Restoration
2. Add Restrooms
3. Improve Connectivity & Accessibility
4. Improve existing park infrastructure
5. Improve playground

Parks Master Plans

Key components for each park

Habitat
Restoration

Green
Infrastructure



Comfort
Amenities



Trail
Connections

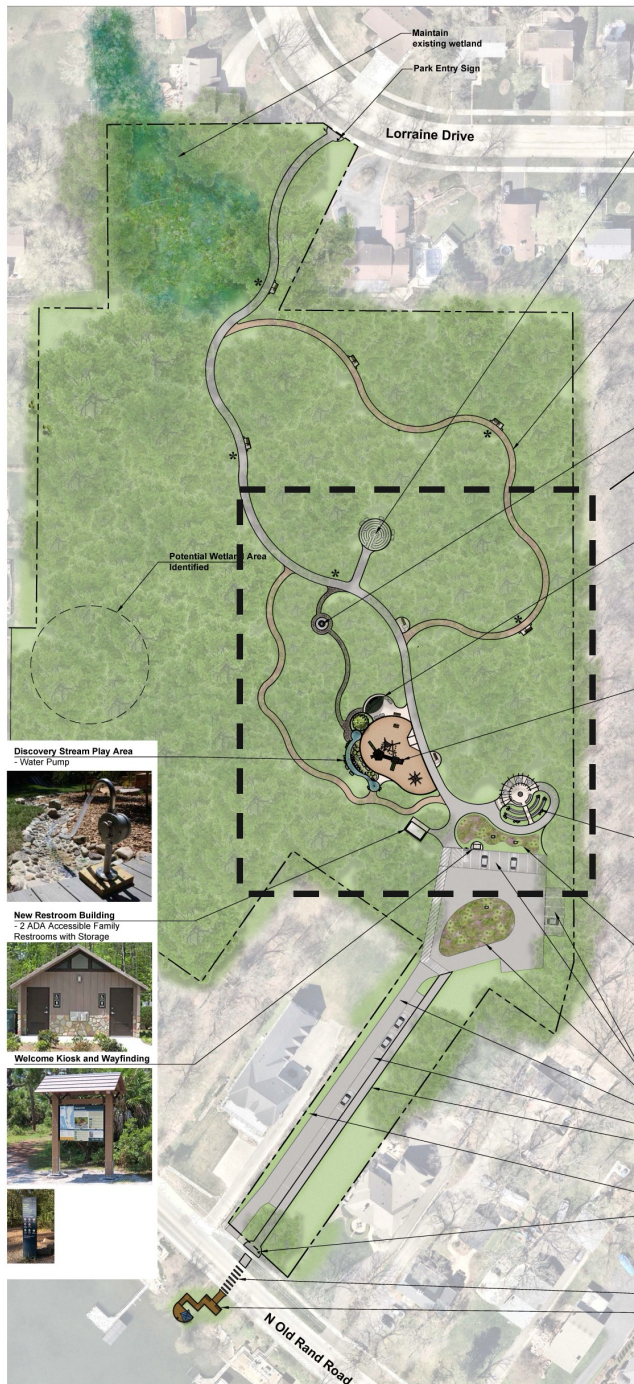


Unique
Features



Playground
Improvements
Theming and
Accessibility



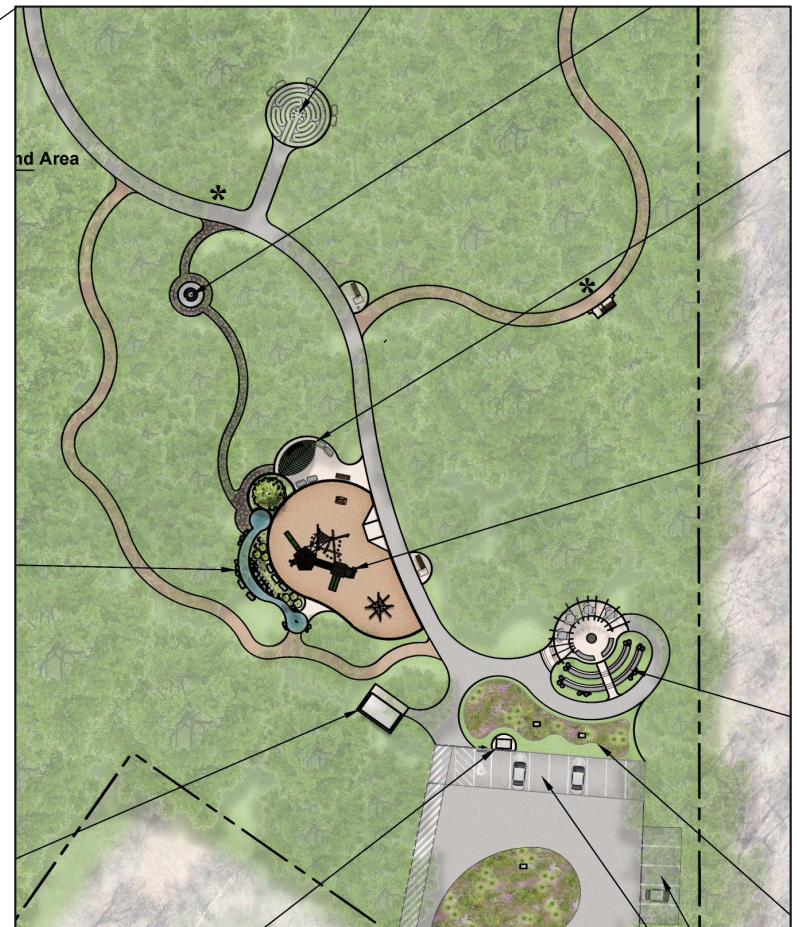


MASTER PLAN

SCALE: 1" = 40'-0"

- Meditation Labyrinth**
 - Crushed Granite
 - Native Grass
- 6' Wide Mutch Trail**
 - Benches Along Trail
 - Interpretive Signage
 - Educational Signage
- Bird's Nest Play**
 - Tree Look-A-Like
- Accessible Playground Seating Area**
 - Concrete Surfacing
 - Leaf Shaped Shade Structure
 - Accessible Seating
- Tree House Play Structure**
 - Engineered Wood Fiber Surfacing
 - Concrete Sloped Entry
- Outdoor Classroom**
 - 2 Tiered Stone Seating
 - Picnic Table with Punched Metal Pergola
- New Pollinator Garden & Insect houses**
 - Two New Insect Houses
- Permeable Paver Parking Stalls**
- Existing Native Planting**
- Existing Driveway**
- Expanded Parallel Parking Spaces**
- Trail Improvements**
 - Sidewalk Connection to N. Old Rand Road
 - 8' Wide Trail Connection from N. Old Rand Road
 - Park Sign
 - New Crosswalk to Overlook
 - Infiltration Trenches at Drive and Proposed Sidewalk
- Park Entry Sign**
- Flashing Beacon at Pedestrian Crossing**
- Overlook and Fishing Pier**
 - Recycled Composite Deck and Stairs
 - Seating Area with Shade
 - Interpretive Signage

Enlargement



Kuechmann Arboretum

Master Plan: Kuechmann Arboretum

December 11, 2020
Copyright 2020
Upland Design Ltd
Project #1100

Wetland Boardwalk Overlook

- Habitat Restoration
- Informational Signage & Seating
- Recycled Composite Material



Cattail Marsh

- Herbicide for Invasives Maintenance
- Prescribed Burn
- Seeding with Emergent Wetland Seed Mix

Renovated Sand Volleyball

- New Concrete Curb
- Accessible Seating

Fitness Stations

- 3 Stations
- Concrete Surface

Edge Restoration

- Remove Buckthorn and Honeysuckle
- Herbicide for Invasives Maintenance
- Wet-Mesic Prairie Seed Mix
- Native Tree and Shrub Plantings

Bridge

- Recycled Composite Material

Woodland Restoration

- Remove Buckthorn and Honeysuckle
- Herbicide for Invasives Maintenance
- Mesic Woodland Seed Mix
- Native Tree and Shrub Plantings

Trail Enhancements

- Expanded Walking Trails
- Existing Trail to be Repaved
- New Loop Trail
- Accessible Bench Seating
- Informational Signage



Oak Ridge Marsh

Playground

- Nature Themed Equipment
- Inclusive Equipment: We-Go-Swing
- Accessible Engineered Wood Fiber Safety Surfacing
- Accessible Bench Seating



- Accessible Picnic Table Seating
- Concrete Paving



New Restroom Building

- 2 ADA Accessible Family Rooms



Expanded Parking

- 11 Existing Standard Spots replaced by 23 New Standard Spots
- 1 ADA Spot
- Permeable Pavers

Pickleball Courts

- 6 Asphalt Courts
- 10' Ht. Black Coated Chainlink Fence
- Fencing Between Courts
- Shaded Seating Area



Half-Court Basketball

- Asphalt with Color Coat



Rain Garden

- Sport Courts Drainage
- Interpretive Sign
- Native Pollinator Planting and Habitat



Master Plan: Oak Ridge Park

Boardwalk and Overlook Deck
- Recycled Composite Material



Renovating Existing Loop Trail - 0.50 miles
- 6' Wide Asphalt Trail
- Accessibility Improvements
- Bridge Improvements & Replacements



Existing Parking Lot to Remain
- 22 Existing Spaces

Skate Park - 90' x 90'
- New Concrete Skate Park Equipment



Woodland Restoration
- Remove Buckthorn and Honeysuckle
- Herbicide for Invasives Maintenance
- Wet-Mesic Prairie Seed
- Native Tree and Shrub Planting

Pump Track - Option 1
- Asphalt Track
- Interior Depressional Detention Storage at Existing Low Spot



Pathway Connections to Surrounding Neighborhoods



Playground Area

- 2-5 and 5-12 Play Equipment
- Universally Inclusive Stem/Dinosaur Themed Play Equipment
- Poured-in-Place Surfacing



Parking Lot

- 23 New Parking Spaces
- 1 New ADA Parking Space
- 5 Tree Islands
- Connection to Bur Oak Drive and Old Mill Grove Road

Community Shelter & Restrooms

- 20'x30' Shelter
- 2 ADA Accessible Family Restrooms
- Storage Space
- Accessible Game Tables
- Accessible Picnic Table Seating



Fossil Excavation Site

- Sand Discovery Dinosaur Excavation Trail



Master Plan: Old Mill Grove Park

- Full Court Basketball**
 - Accessible Spectator Seating
 - Permeable Asphalt Paving



- New 20' x 20' Shelter at Playground**
 - Accessible Picnic Table Seating



- 2-5 and 5-12 Playground - Sports Themed Play Equipment**
 - Mound and Elevation Play
 - Inclusive Spinner



- Batting Cages**
 - 2 Batting Cages on Artificial Turf



- Picnic Shelter, Concessions and Restrooms**
 - Accessible Picnic Table Seating
 - 2 ADA Accessible Family Rooms



- Sports Plaza**
 - Seat Wall
 - Native Landscaping
 - New Shade Trees

- Ballfield Accessibility Improvements**
 - Accessible Path to Seating and Dugout

- Arboretum Walk with Signage**
 - Shade Trees
 - Interpretive Signage



- Expanded Trail System and Accessible Connections**
 - Asphalt Paving
 - Accessible Bench Seating





Trail Connection
- 8' Wide Asphalt Trail from Linden Road to N Pleasant Road



Multi-Purpose Field
- Maximum Field Size- 123'x236'



Playground Renovation
- Ninja Course
- 2-5 Play Structure and Swings
- New Engineered Wood Fiber



2-5 Play House



Wheelchair Accessible Sway Fun



Accessible Seating with Shade



Ninja Course



Sidewalk Connection
- 5' Concrete Sidewalk
- Connection to Existing North and South Sidewalks

Rain Garden
- Multipurpose Field and Parking Lot Drainage
- Interpretive Sign
- Native Pollinator Planting and Habitat



20'x20' Community Picnic Shelter
- Metal Structure
- Concrete Paving
- Accessible Picnic Table Seating
- Accessible Game Tables



New Restroom Building
- 2 ADA Accessible Family Rooms
- Storage Space



Existing Parking Lot
- 13 Standard Parking Spots
- Permeable Paver Retrofit



Parking Lot Expansion
- 16 New Standard Parking Spots
- 2 New ADA Parking Spots
- Secondary Vehicle Entry/Exit

Park Entry Signage

Natural Area Management

Restoration projects unique to each site

Kuechmann



Vegetation Survey

Remove Invasive
Woody Vegetation

Native Plant
Seeding

Multi-year
Ecological
Management

Oak Ridge



Vegetation Survey

Remove Invasive
Vegetation

Native Plant Seeding

Prescribed Burns &
Multi-year Ecological
Management

Old Mill Grove



Vegetation Survey

Remove Invasive
Vegetation in
Wetland

Native Plant Seeding

Prescribed Burns &
Multi-year Ecological
Management

Staples



Vegetation Survey

Remove Invasive
Vegetation

Native Plant Seeding

Prescribed Burns &
Multi-year Ecological
Management

Zurites



Vegetation Survey

Native Plant Seeding

Prescribed Burns &
Multi-year Ecological
Management

Grant Funding:



Recreational Trail Grant Program

Purpose: The purpose of this grant is to fund the development of motorized and non-motorized trail projects.

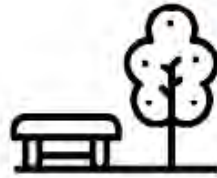
Maximum Development Grant: \$200,000

Maximum Acquisition Grant: No Maximum

Funding: Federal Highway Administration

Reimbursement: 80% for the acquisition development and renovation of both motorized and non-motorized recreational trails

Fund Allocation: 70% for non-motorized trail projects and 30% for motorized projects



Land & Water Conservation Fund Grant Program

Purpose: The purpose of this grant is to assist in the acquisition of new park sites or park expansion, water frontage, nature study, and natural resource preservation.

Maximum Acquisition Grant: \$750,000

Funding: Federal Funding from offshore oil and gas leases

Funding Assistance: 50% of eligible expenses



Bike Path Grant Program

Purpose: This grant helps assist in funding to acquire, construct, and rehabilitate public, non-motorized bicycle paths and directly related support facilities.

Restrictions: Paths developed through the program must be a minimum of 8' wide and cannot be circular paths within a park.

Maximum Development Grant: \$200,000

Maximum Acquisition Grant: No Maximum

Total Funding Available: Varies each year

Reimbursement: 50% reimbursement



Illinois Transportation Enhancement Program

Purpose: Assists in funding smaller scale but important transportation system improvements for alternate modes of transportation.

Maximum Award: Varies Per Year

Eligible Categories: Pedestrian/bicycle facilities, streetscapes, conversion of abandoned railroad corridors to trails, historic preservations, vegetation management, archaeological activities, pollution and storm water management, wildlife protection and connectivity, turnouts, overlooks, and viewing areas.

Development Cost

Oak Ridge Park
Village of Lake Zurich

Prepared Date: 12/30/2025
Project #1395

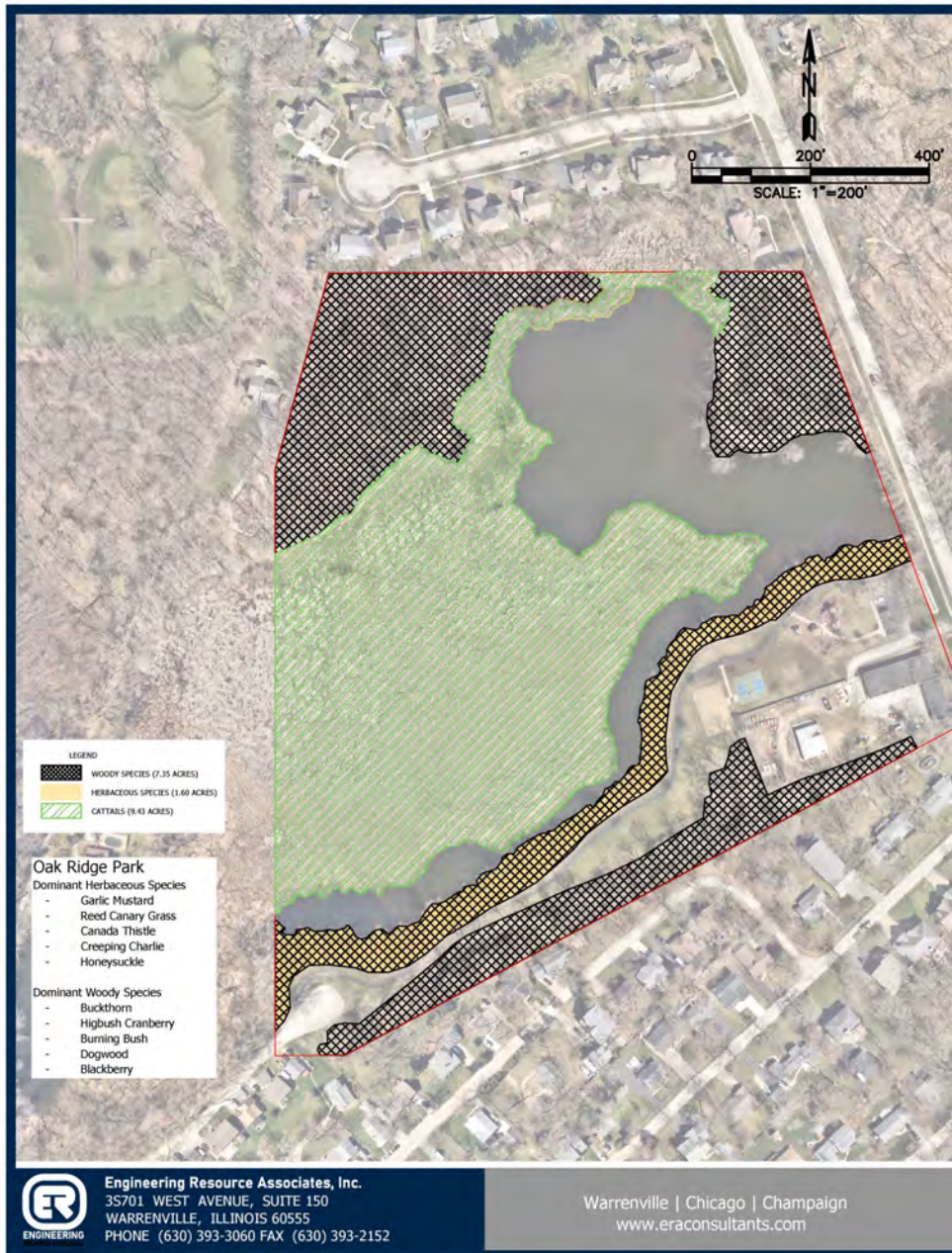
Summary

Master Plan - Unconstrained	
Restroom	\$ 355,348.90
New 20'x20' Shelter	\$ 161,829.43
2-12 Playground	\$ 577,218.49
Basketball Half Court	\$ 52,525.80
Renovated Sand Volleyball	\$ 33,222.67
Pickleball Courts and Plaza - 6 Courts	\$ 666,362.26
Asphalt Trail	\$ 378,704.20
Wetland Overlook - Boardwalk	\$ 403,809.25
Expanded Parking Lot - 25 Standard, 2 ADA	\$ 522,143.61
Total Cost	\$ 3,151,164.60

Master Plan - Constrained	
New 20'x20' Shelter	\$ 114,012.43
2-12 Playground	\$ 527,814.67
Basketball Half Court	\$ 52,525.80
Renovated Sand Volleyball	\$ 33,222.67
Pickleball Courts and Plaza - 4 Courts	\$ 489,777.34
Asphalt Trail	\$ 378,704.20
Wetland Overlook - Limestone Outcropping	\$ 73,416.00
Expanded Parking Lot - 14 Standard, 2 ADA	\$ 325,388.08
Total Cost	\$ 1,994,861.19

Natural Area Management	
Natural Area Maintenance	\$ 541,776.28

Natural Area Maintenance



Oak Ridge Park

Natural Area Size: 16.8 acres

Natural Area Location: Adjacent to residential neighborhoods along Lions Drive

Quality Rank: 2 (Fair condition)

Plant Community Overview

This natural area has woodland and wetland habitats. The wetlands are located around the pond area and primarily in the middle and southwest portion of the site. The species found are Cattails, Phragmites, and Reed Canary Grass. The woodland areas run along the boundaries of the property and denser woodland areas are located at the northwest and northeast corners of the site. Some of the woody species present are High Bush Cranberry, Burning Bush, Buckthorn, Honeysuckle, Gray Dogwood, and Multiflora Rose. In addition, there pockets of garlic Mustard, Honey Suckle, Creeping Charlie, and Canada Thistle are present throughout the site.

Site Concerns

The marsh is dominated by cattails. Cattails are slowly taking over the open water areas of the pond and degrading the native marsh areas surrounding the pond. Invasive and non-native vegetation from the degrading areas will likely spread further throughout the site without management. The area between the park and the pond is dominated with invasive woody species. These species should be removed to open up views of the pond. A wet to mesic seed mix should be planted to stabilize the shoreline.

Opportunities for Public Use

This area already has a public pathway, playground, and sports courts. In addition, the Village is evaluating enhancing the site with additional parking and updating the amenities.

Timeline	Description	Estimated Budget
Year 1		\$54,335.00
Initial Vegetation Survey and Summary Report	Conduct a survey of the species (native and non-native) present at various points throughout the growing season to establish baseline for measuring site progress. Recommend a minimum of 3 visits and end of year report of findings.	\$2,400.00
Stewardship	Regular maintenance visits to manage invasive, non-native vegetation (Reed Canary Grass, Garlic Mustard, Creeping Charlie, Canada Thistle, Cattails and Phragmites). Recommend 4 visits per year.	\$33,560.00
Removal of Woody Vegetation	Remove woody species throughout the unit (approximately 7 acres) and apply herbicide to stump. Recommend removal to be completed primarily utilizing forestry mower with some hand cutting.	\$18,375.00
Year 2		\$36,966.80
Vegetation Survey and Summary Report	Conduct a survey of the species (native and non-native) present at various points throughout the growing season to measure progress over prior year. Recommend a minimum of 3 visits and end of year report of findings.	\$2,400.00
Stewardship	Regular maintenance visits to manage invasive, non-native vegetation, including Reed Canary Grass, Garlic Mustard, Creeping Charlie, Canada Thistle, Cattails, Phragmites and woody resprouts. Recommend 4 visits per year.	\$34,566.80

Master Plan Preliminary Phasing



Phasing Totals

Constrained Unconstrained



		2026	2027		2028		2029	
Improvements			Constrained	Unconstrained	Constrained	Unconstrained	Constrained	Unconstrained
Oak Ridge Park	Grant Submittal: OSLAD	\$ 7,000.00						
	Park Development		\$ 1,921,445.19	\$ 3,148,981.44				
	Natural Area Management: Year 1		\$ 54,335.00	\$ 54,335.00				
	Natural Area Management: Year 2				\$ 55,893.05	\$ 55,893.05		
	Natural Area Management: Year 3						\$ 64,706.66	\$ 64,706.66
	Natural Area Management: Year 4							
	Natural Area Management: Year 5 and on							
Staples	Grant Submittal: OSLAD				\$ 7,000.00	\$ 7,000.00		
	Park Development						\$ 3,415,278.00	\$ 3,998,157.00
	Natural Area Management: Year 1						\$ 15,631.19	\$ 15,631.19
	Natural Area Management: Year 2							
	Natural Area Management: Year 3							
	Natural Area Management: Year 4							
	Natural Area Management: Year 5							
Old Mill Park	Grant Submittal: OSLAD							
	Park Development							
	Natural Area Management: Year 1							
	Natural Area Management: Year 2							
	Natural Area Management: Year 3							
	Natural Area Management: Year 4							
	Natural Area Management: Year 5							
Kuechmann Arboretum	Grant Submittal: OSLAD							
	Park Development							
	Natural Area Management: Year 1							
	Natural Area Management: Year 2							
	Natural Area Management: Year 3							
	Natural Area Management: Year 4							
	Natural Area Management: Year 5							
Zurries Park	Grant Submittal: OSLAD							
	Park Development							
Yearly Expense Totals		\$ 7,000.00	\$ 1,975,780.19	\$ 3,203,316.44	\$ 62,893.05	\$ 62,893.05	\$ 3,495,615.85	\$ 4,078,494.85
Potential Grant Totals			\$ 600,000.00	\$ 600,000.00			\$ 600,000.00	\$ 600,000.00
Yearly Out of Pocket Total		\$ 7,000.00	\$ 1,375,780.19	\$ 2,603,316.44	\$ 62,893.05	\$ 62,893.05	\$ 2,895,615.85	\$ 3,478,494.85
			Constrained	Unconstrained	Constrained	Unconstrained	Constrained	Unconstrained
		2026	2027		2028		2029	

Constrained Vs Unconstrained

Phasing Totals

		2030		2031		2032	
Improvements		Constrained	Unconstrained	Constrained	Unconstrained	Constrained	Unconstrained
Oak Ridge Park	Grant Submittal: OSLAD						
	Park Development						
	Natural Area Management: Year 1						
	Natural Area Management: Year 2						
	Natural Area Management: Year 3						
	Natural Area Management: Year 4	\$ 51,119.23	\$ 51,119.23				
	Natural Area Management: Year 5 and on			\$ 40,172.08	\$ 40,172.08	\$ 41,305.24	\$ 41,305.24
Staples	Grant Submittal: OSLAD						
	Park Development						
	Natural Area Management: Year 1						
	Natural Area Management: Year 2	\$ 8,406.03	\$ 8,406.03				
	Natural Area Management: Year 3			\$ 31,731.17	\$ 31,731.17		
	Natural Area Management: Year 4					\$ 14,321.57	\$ 14,321.57
	Natural Area Management: Year 5						
Old Mill Park	Grant Submittal: OSLAD	\$ 7,000.00	\$ 7,000.00				
	Park Development			\$ 2,098,742.00	\$ 3,947,007.00		
	Natural Area Management: Year 1			\$ 38,450.05	\$ 38,450.05		
	Natural Area Management: Year 2					\$ 33,213.50	\$ 33,213.50
	Natural Area Management: Year 3						
	Natural Area Management: Year 4						
	Natural Area Management: Year 5						
Kuechmann Arboretum	Grant Submittal: OSLAD						\$ 7,000.00
	Park Development						
	Natural Area Management: Year 1						
	Natural Area Management: Year 2						
	Natural Area Management: Year 3						
	Natural Area Management: Year 4						
	Natural Area Management: Year 5						
Zurries Park	Grant Submittal: OSLAD						
	Park Development						
Yearly Expense Totals		\$ 66,525.27	\$ 66,525.27	\$ 2,209,095.29	\$ 4,057,360.29	\$ 88,840.31	\$ 95,840.31
Potential Grant Totals				\$ 600,000.00	\$ 600,000.00		
Yearly Out of Pocket Total		\$ 66,525.27	\$ 66,525.27	\$ 1,609,095.29	\$ 3,457,360.29	\$ 88,840.31	\$ 95,840.31
		Constrained	Unconstrained	Constrained	Unconstrained	Constrained	Unconstrained
		2030		2031		2032	

Constrained Vs Unconstrained

Phasing Totals

		2033		2034		2035		2036	
Improvements		Constrained	Unconstrained	Constrained	Unconstrained	Constrained	Unconstrained	Constrained	Unconstrained
Oak Ridge Park	Grant Submittal: OSLAD								
	Park Development								
	Natural Area Management: Year 1								
	Natural Area Management: Year 2								
	Natural Area Management: Year 3								
	Natural Area Management: Year 4								
	Natural Area Management: Year 5 and on	\$ 32,454.30	\$ 32,454.30	\$ 43,674.57	\$ 43,674.57	\$ 44,912.80	\$ 44,912.80	\$ 46,188.19	\$ 46,188.19
Staples	Grant Submittal: OSLAD								
	Park Development								
	Natural Area Management: Year 1								
	Natural Area Management: Year 2								
	Natural Area Management: Year 3								
	Natural Area Management: Year 4								
	Natural Area Management: Year 5	\$ 9,046.41	\$ 9,046.41	\$ 7,329.60	\$ 7,329.60				
Old Mill Park	Grant Submittal: OSLAD								
	Park Development								
	Natural Area Management: Year 1								
	Natural Area Management: Year 2								
	Natural Area Management: Year 3	\$ 215,496.54	\$ 215,496.54						
	Natural Area Management: Year 4			\$ 59,607.58	\$ 59,607.58				
	Natural Area Management: Year 5					\$ 36,070.75	\$ 36,070.75	\$ 26,010.65	\$ 26,010.65
Kuechmann Arboretum	Grant Submittal: OSLAD								
	Park Development	\$ 979,293.00	\$ 2,379,972.00						
	Natural Area Management: Year 1	\$ 44,306.77	\$ 44,306.77						
	Natural Area Management: Year 2			\$ 15,520.56	\$ 15,520.56				
	Natural Area Management: Year 3					\$ 61,335.88	\$ 61,335.88		
	Natural Area Management: Year 4							\$ 27,530.23	\$ 27,530.23
	Natural Area Management: Year 5								
Zurles Park	Grant Submittal: OSLAD				\$ 7,000.00				
	Park Development					\$ 989,724.00	\$ 2,219,602.00		
Yearly Expense Totals		\$ 1,280,597.02	\$ 2,681,276.02	\$ 126,132.31	\$ 133,132.31	\$ 1,132,043.44	\$ 2,361,921.44	\$ 99,729.07	\$ 99,729.07
Potential Grant Totals			\$ 600,000.00				\$ 600,000.00		
Yearly Out of Pocket Total		\$ 1,280,597.02	\$ 2,081,276.02	\$ 126,132.31	\$ 133,132.31	\$ 1,132,043.44	\$ 1,761,921.44	\$ 99,729.07	\$ 99,729.07
		Constrained	Unconstrained	Constrained	Unconstrained	Constrained	Unconstrained	Constrained	Unconstrained
		2033		2034		2035		2036	

Constrained Vs Unconstrained

Thank you



Lake Zurich Key Parks Master Plan

