



*At the Heart of Community*

# Lake Michigan Water Supply Program Update

June 16, 2025



**CDM  
Smith**

# Agenda/Outline

- Program Update
- Next Steps and Schedule
- Q&A



# Overall Program Update

# Lake Zurich is now a member of CLCJAWA

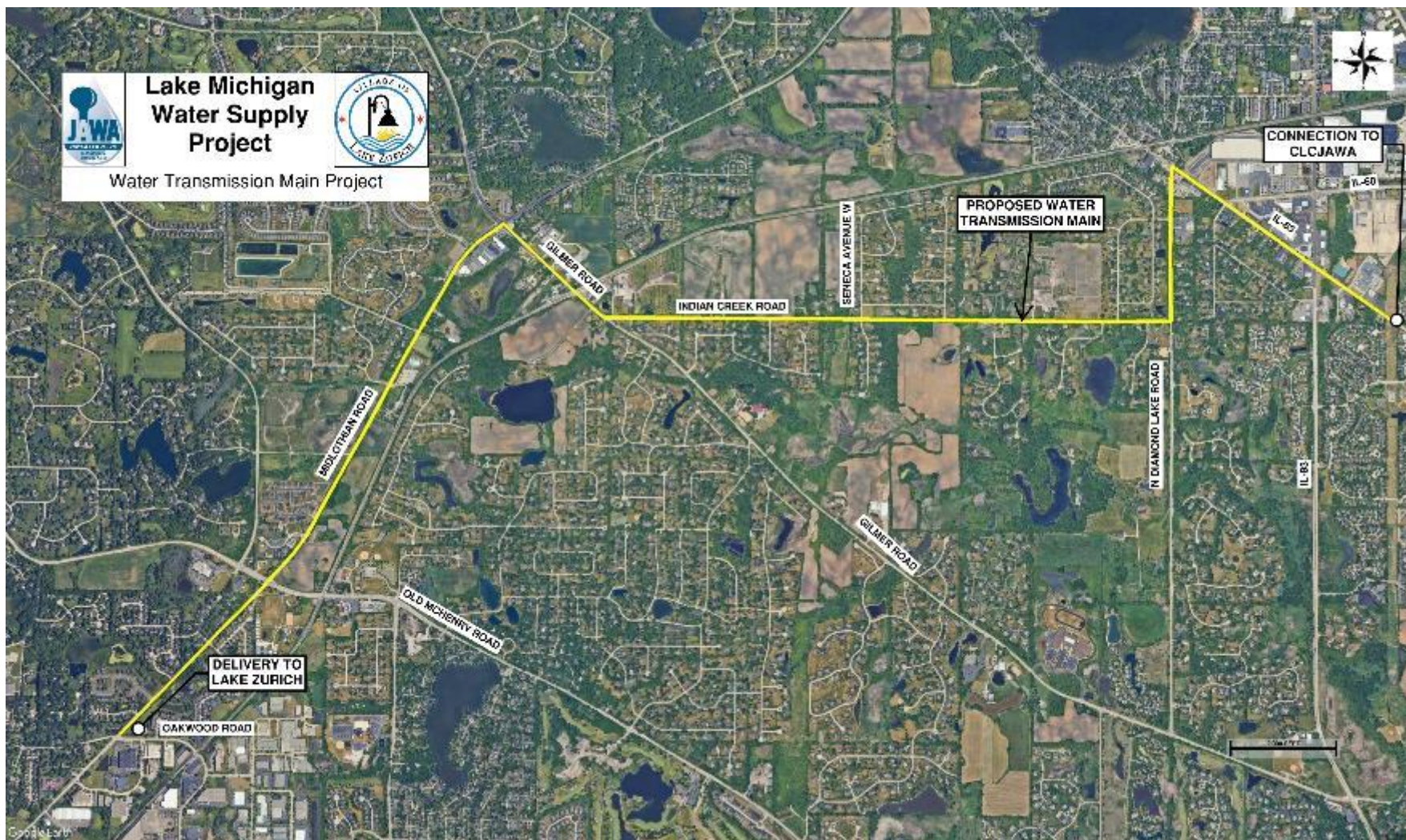


# Program Update – What have we done since last update?

- ✓ Executed Admissions Agreement with CLCJAWA (LZ becoming member)
- ✓ Established LZ Technical Committee
- ✓ Completed Route Study
- ✓ Submitted IEPA Project Plans and received planning approval
- ✓ Held two public hearings and two public outreach meetings
  - CLCJAWA, Village of Lake Zurich, and Village of Mundelein
- ✓ Met with project stakeholders and established requirements/expectations
- ✓ In process of acquiring property for proposed booster pump station
- ✓ Initiated field investigations and preliminary design
- ✓ Initiated source water study (corrosion control)

# Proposed New Delivery to Lake Zurich





# Field Investigations and Public Outreach



# Funding Update

- Received Project Planning Approval from IEPA
- First two bid packages are on IEPA's Intended Use Plan for FY 2026 Funding
  - Remaining bid packages will be in FY 2027 Plans
- Program Cost is still within approved budget established in 2023.



## Schedule and Next Steps

# Next Steps

- ✓ Executed Admissions Agreement with CLCJAWA (LZ becoming member)
- ✓ Established LZ Technical Committee
- ✓ Completed Route Study
- ✓ Submitted IEPA Project Plans and received planning approval
- ✓ Held two public hearings and two public outreach meetings
- ✓ Met with project stakeholders and established requirements/expectations
- ✓ In process of acquiring property for proposed booster pump station
- ✓ Initiated field investigations and preliminary design
- ✓ Initiated source water study (corrosion control)
- Continue public outreach
- Complete preliminary design of improvements
- Complete detailed design of improvements
- Complete source water study
- Bid, permit and execute loans with IEPA
- Construct improvements
- Startup/testing and Water Delivery