



# FIRE DEPARTMENT

---

## MONTHLY INFORMATION REPORT

**June 2023**

---

HIGHLIGHTING DATA METRICS  
TO IDENTIFY OPERATIONAL TRENDS  
AND  
FACILITATE INFORMED DECISION-MAKING

70 E. MAIN STREET  
LAKE ZURICH, IL 60047

## Departmental Narrative

**OUR MISSION:** To care for and protect our community.

**OUR VISION:** The Lake Zurich Fire Department is dedicated to meeting the ever-changing needs of our community, while ensuring a safe and secure environment for all, through professional development, unity, and teamwork.

**OUR VALUES:** Professionalism, Responsibility, Integrity, Dedication, Honor

---

### EXECUTIVE SUMMARY – JUNE 2023

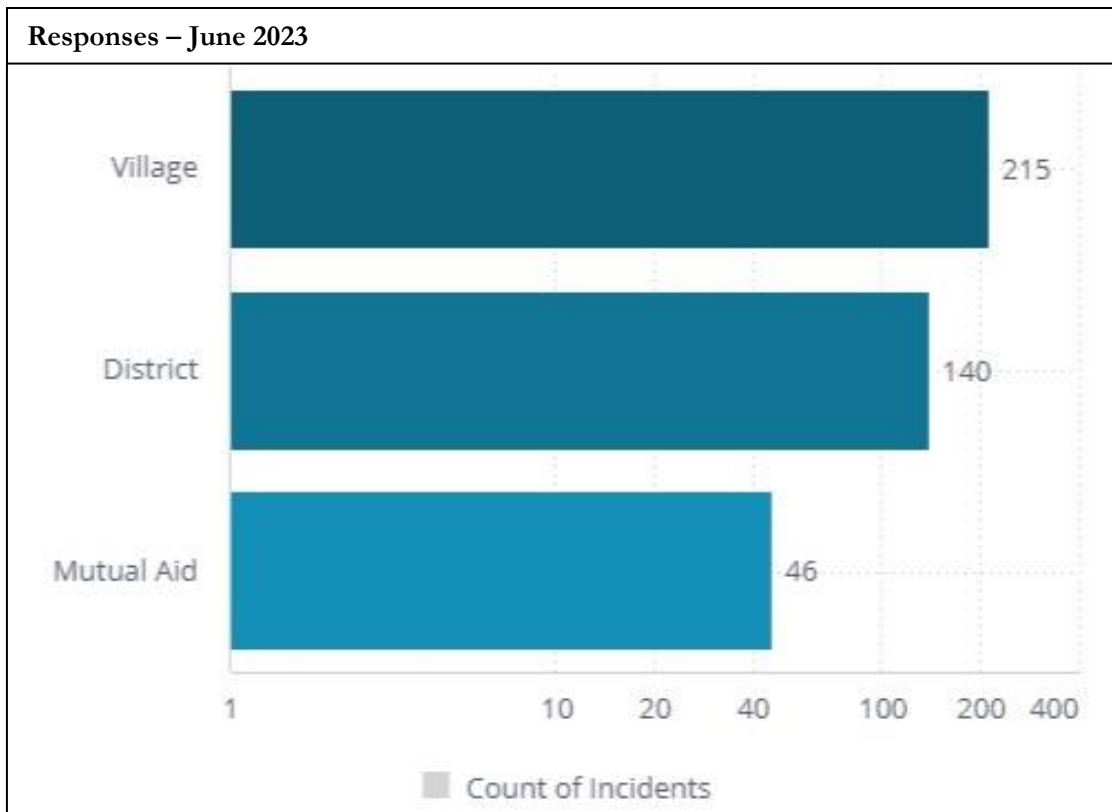
---

The Lake Zurich Fire Department provides a full range of professional and high-quality services to the Village of Lake Zurich and the Lake Zurich Rural Fire Protection District. We protect approximately 37,000 residents, many local businesses, and visitors across the twenty-five square mile combined service area. The Villages covered in the fire district include Hawthorn Woods, Kildeer, Deer Park, North Barrington, and Lake Barrington.

---

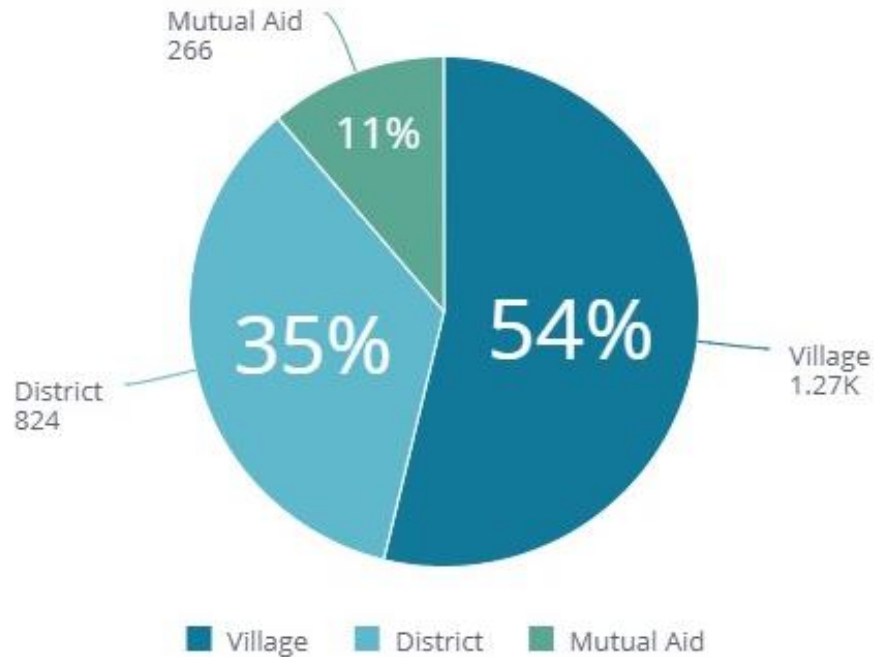
**401** Incidents – June 2023

---



**2,360** Incidents – Year to Date

#### Responses – Year-to-Date 2023



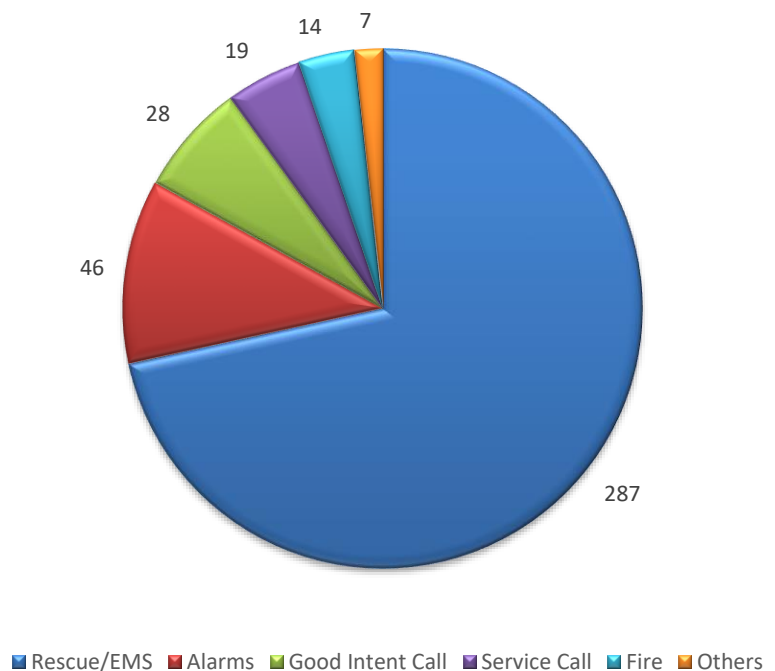
## Incident Types

The Department codes all incidents within the National Fire Incident Reporting System (NFIRS).

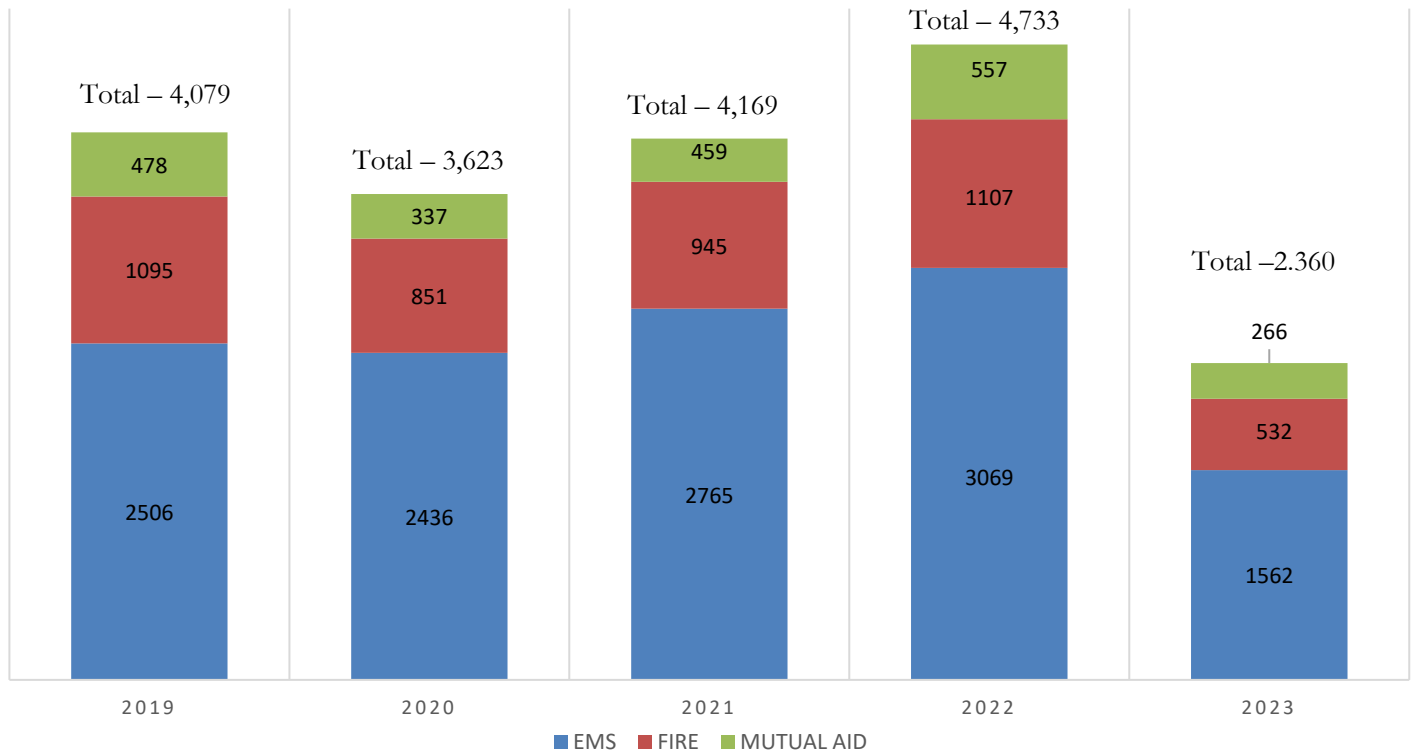
The codes all relate to the text categories noted in the chart to the right. Rescue and EMS incidents account for the majority of incidents we respond to.

In June, **287** incidents were Rescue and EMS incidents.

#### Incident Types - June 2023



## EMS/FIRE/MUTUAL AID YEAR-TO-DATE



## Fire Incidents (Year-to-Date)

### Working Fires

Total Count of Working Fires

46

### Incidents with Property Value Change

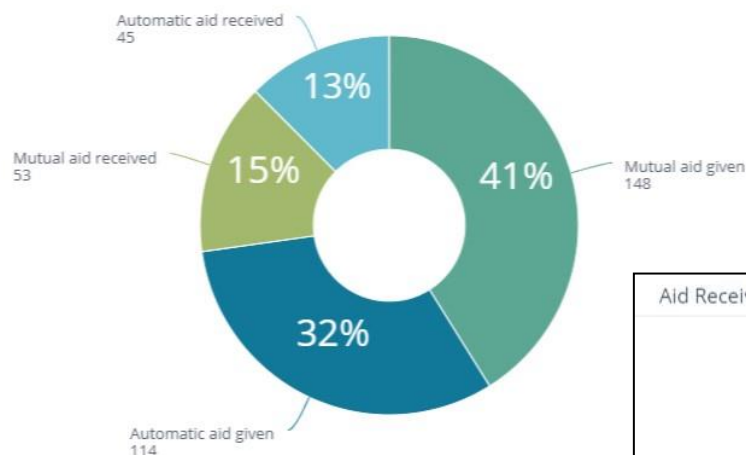
Count of Incidents with Property Loss

19

Percent of Property Value Saved

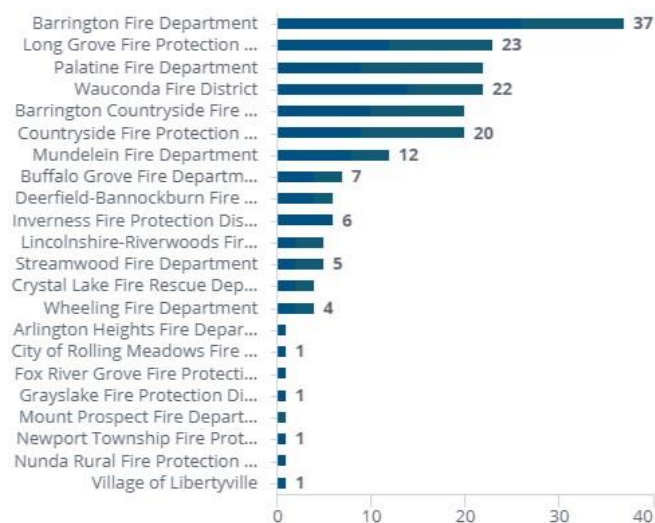
92.76%

Breakdown of Aid Given or Received - Year to Date - 2023



## MUTUAL AID

Aid Received Breakdown by Agency - Year to Date - 2023

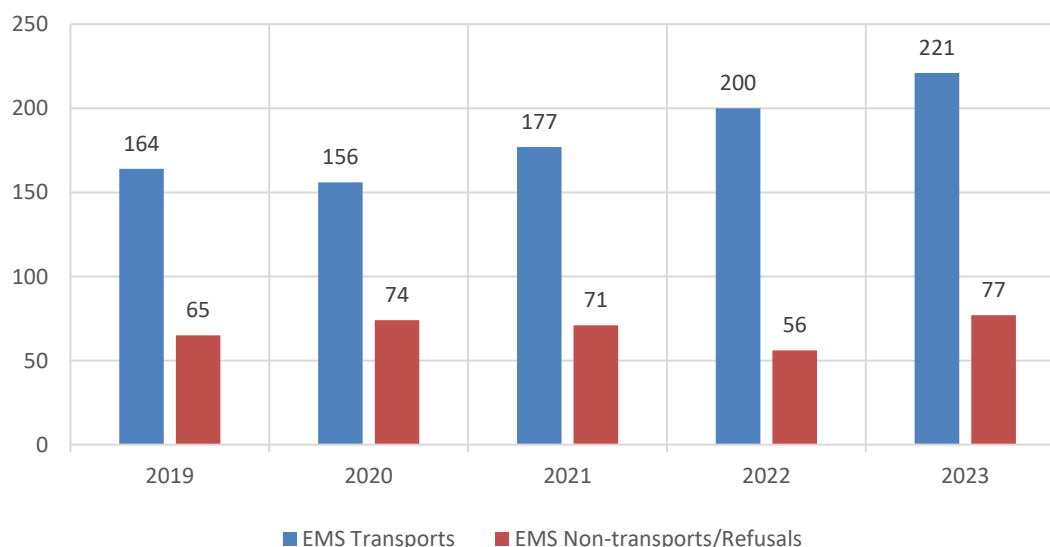


## EMS Incidents

The chart shown below reflects EMS Transports vs. Non-Transports/Refusals. It's important to note that not every EMS call will result in a transport to the hospital. However, as you'll see from the data, transports always outpace Non-Transports/Refusals.

This chart below compares the month of June across 5 years.

EMS Transports vs Non-Transports/Refusals  
Monthly Comparison



## ADMINISTRATION DIVISION

### 2023 Budget



Congratulations to  
Firefighter/Paramedic Joel Fishman  
on completing his probation!  
*(Pictured left)*

Thank you to Conlon Thompson Orthodontics for the generous donation of girl scout cookies! *(Pictured right)*



## Community Relations / Public Education

Community focus is an important aspect of the Department. This includes risk reduction through public education. Examples include but are not limited to; school & daycare visits and station tours where fire safety and a safety message, such as stop, drop, and roll is covered. We also monitor fire and severe weather drills in schools as well as teach exit drills to middle school students. The Department also provides CPR and First-Aid training.

In June, Lake Zurich Fire participated in public education events including Station Tours, the Touch-A-Truck Event at Bright Horizons *(Pictured right)*, CPR classes, and Fire Drills.



## STATIONS & STAFFING



OFFICER



FIREFIGHTER/PARAMEDIC

### STATION 1

321 S. Buesching Road  
Lake Zurich, IL 60047

#### APPARATUS & STAFFING

BATTALION 32



ENGINE 321  
AMBULANCE 321



### STATION 2

350 W. Highway 22  
North Barrington, IL 60010

#### APPARATUS & STAFFING

ENGINE 322  
AMBULANCE 322



### STATION 3

1075 Old McHenry Road  
Lake Zurich, IL 60047

#### APPARATUS & STAFFING

ENGINE 323  
AMBULANCE 323



### STATION 4

21970 Field Pkwy  
Deer Park, IL 60010

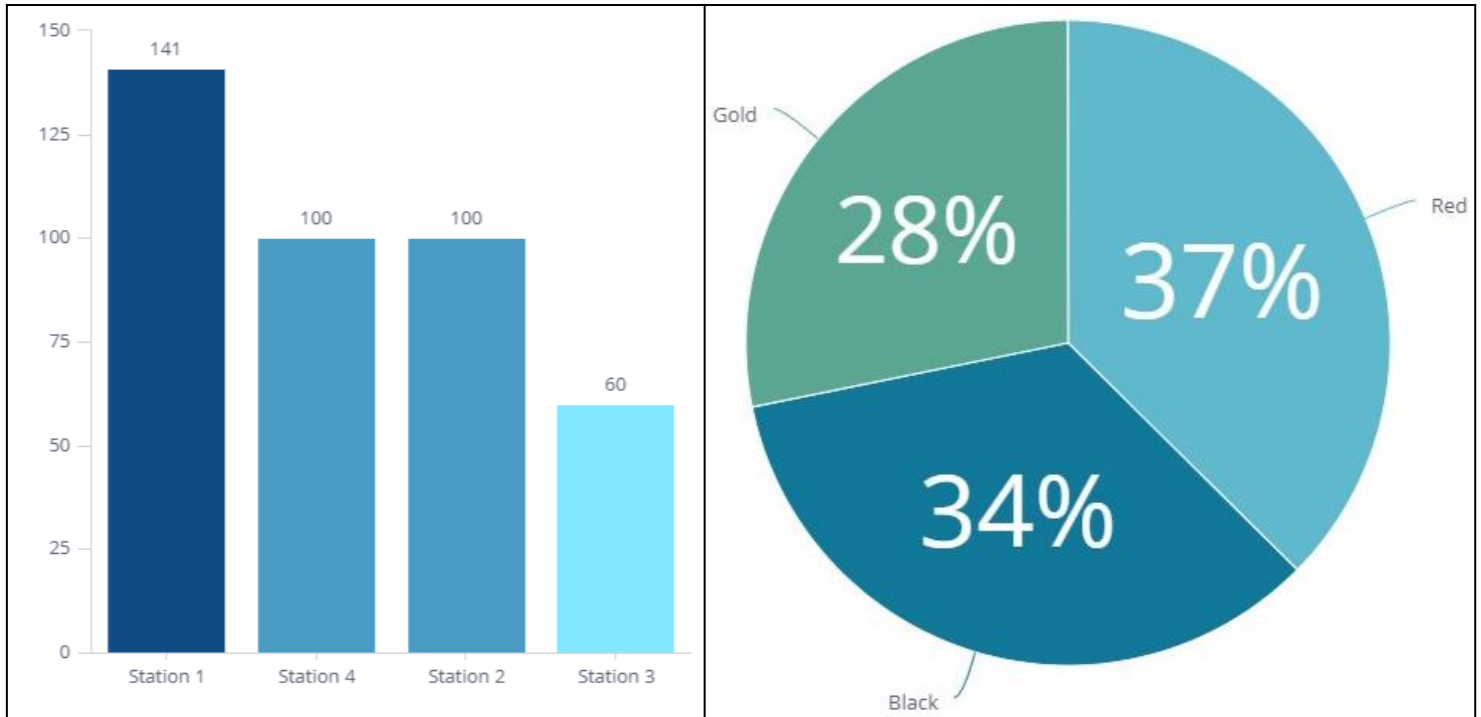
#### APPARATUS & STAFFING

ENGINE 324  
AMBULANCE 324

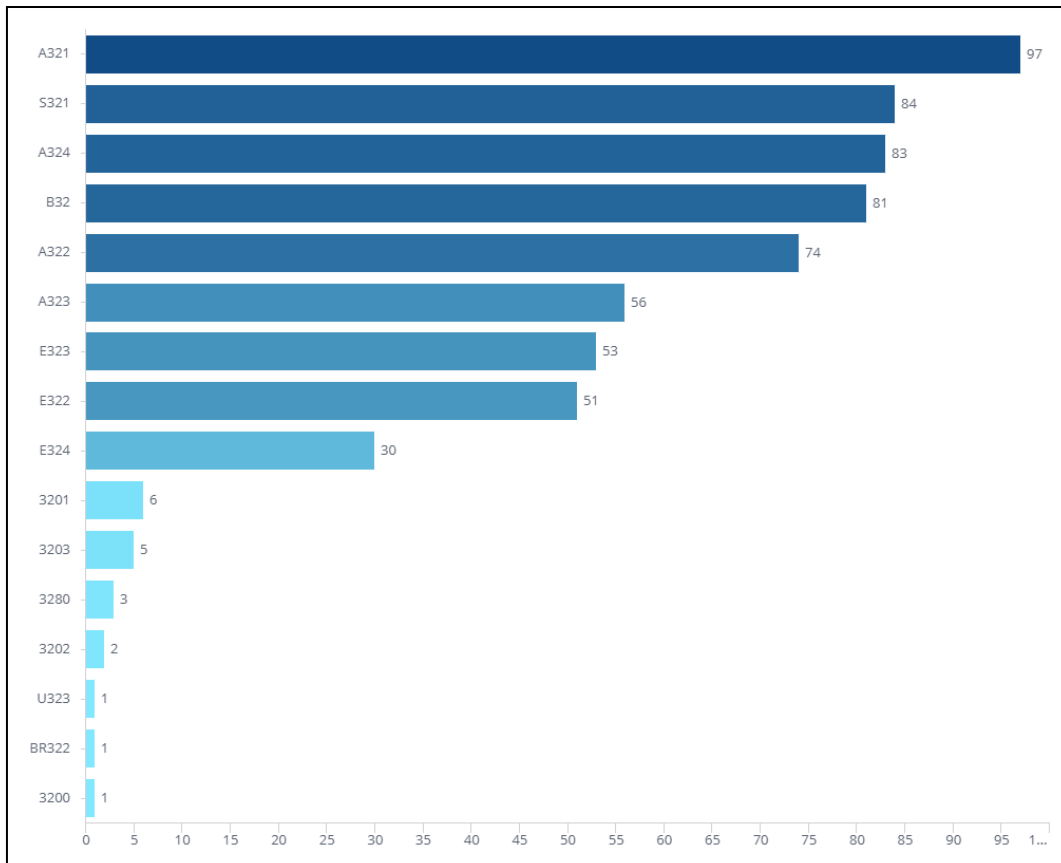


# OPERATIONS DIVISION

## Incident Count by Station | Incident Count by Shift



## Incident Count by Unit

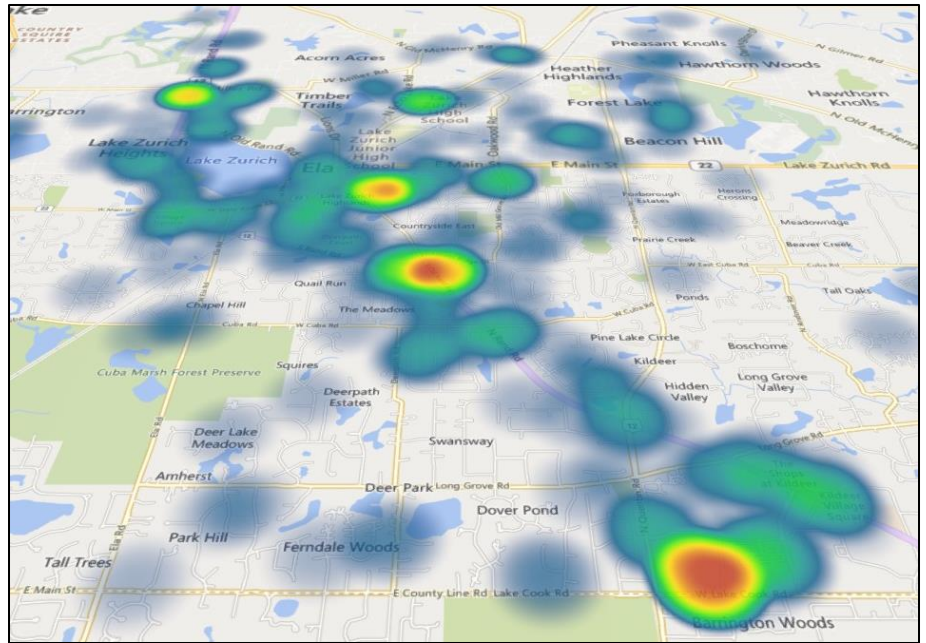


## Response Locations

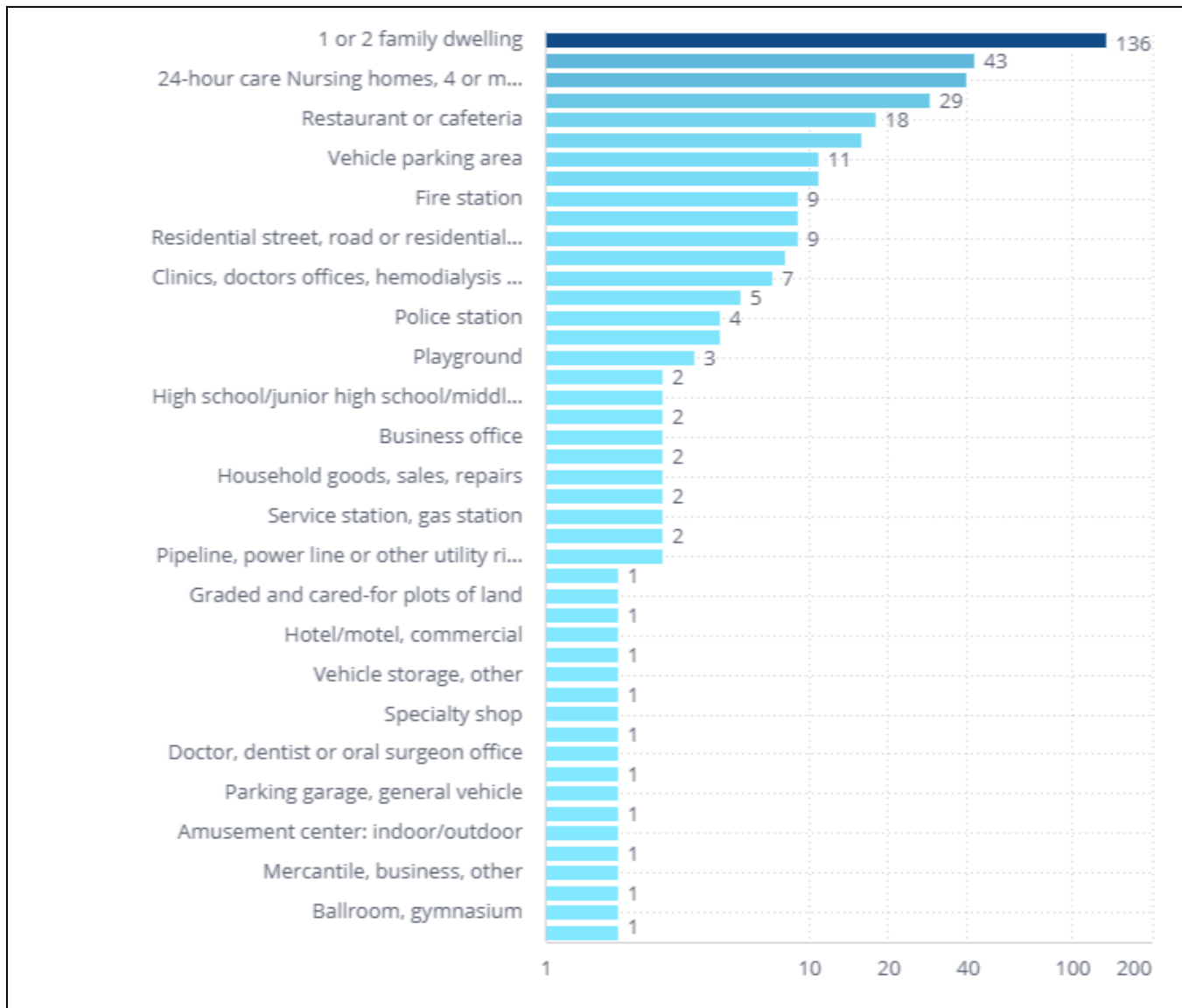
The graphic to the right is a visual representation of call distribution for June.

As visually displayed, the assisted living/memory care facilities are a large portion of our department calls and are consistently within the top locations responded to each month.

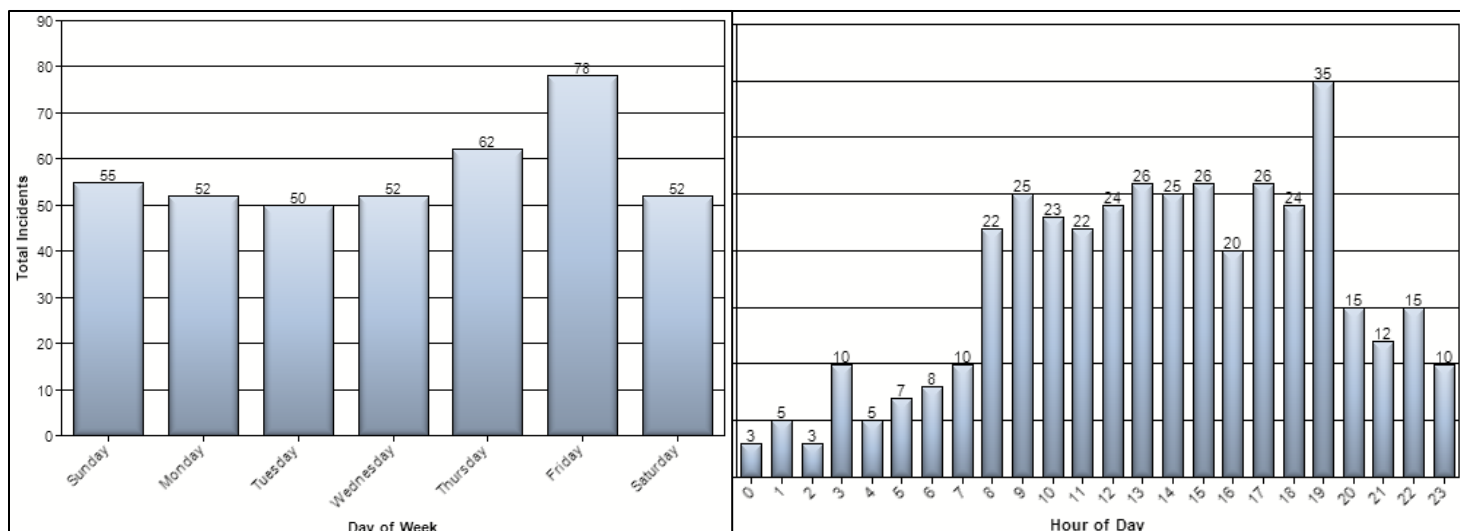
We frequently respond to doctor offices, health clinics, and automobile accidents near the Route 12 corridor.



## Responses by Property Type



## Day of Week Breakdown | Hour of Day Breakdown



## Response Times

Response time includes three key factors: **dispatch handling, turnout, and travel time.**

Dispatch handling time is when dispatch takes in information and then dispatch personnel. The turnout time is when the crews receive the call to the time they get into the vehicles and hit the enroute button. Travel time reflects the time from en route to when they arrive at the incident scene. Construction, speed limits, weather, and train traffic can impact response times. The overall goal for arrival at an emergency fire call is 6 minutes and 20 seconds from the time of notification until the first unit arrives on the scene. For a response to an EMS incident, this time is 6 minutes.

The following shows the average times for all incidents including EMS, Fire, and Mutual Aid in June 2023.

<p>Dispatch Time</p> <p>Average Dispatch Time</p> <p><b>01m:08s</b></p>	<p>Turnout Time</p> <p>Average Turnout Time</p> <p><b>00m:56s</b></p>
<p>Travel Time</p> <p>Average Travel Time</p> <p><b>04m:48s</b></p>	<p>Response Time</p> <p>Average Response Time</p> <p><b>05m:43s</b></p>

---

# TRAINING DIVISION

---

## Fire Training:

- Acquired Structure – Working Fire Scenarios (*pictured right*)
- Making the Stretch – Hose Line Advancement Drills
- Searching for the Fire Victim – Residential operations
- Nozzleman Tactical Advancement and Operations
- Vertical Ventilation – Supporting Interior Firefighting
- Auto Aid Department Training at the Acquired Structure
- Wildland Firefighting
- Support Functions of a Water Rescue/Recovery



## EMS Training:

- Northwest Community Healthcare Continued Education
- Ballistic Vest Donning & Doffing
- Northwest Community Healthcare System Compliance Audit- All Paramedics

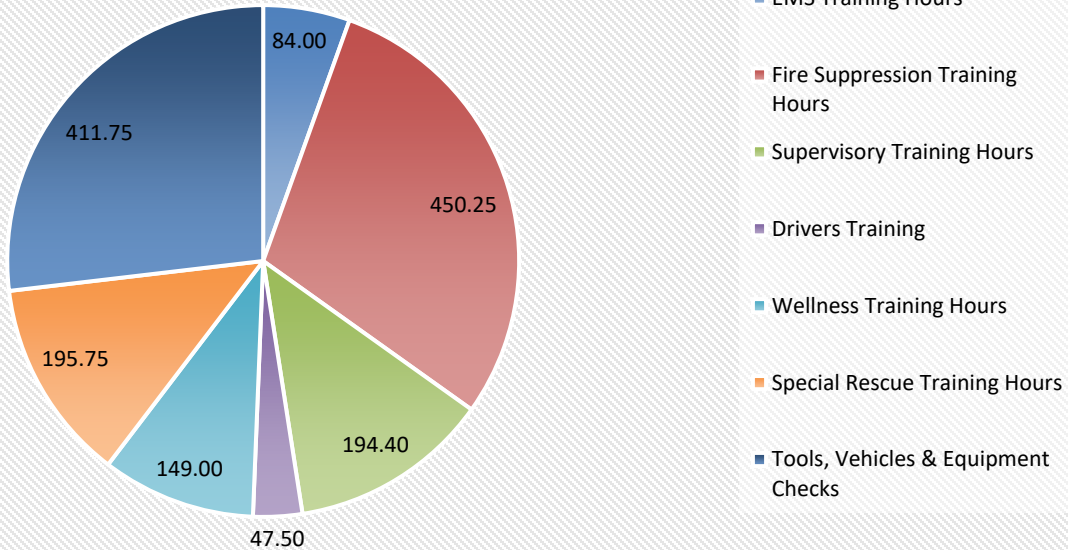
## Special Rescue Training:

- Support Functions of a Water Rescue/Recovery
- Haul Systems – Skills Evaluations Rope Rescue Operations
- Operations Supporting the Dive Rescue
- Dive Rescue – Under Water Search and Recovery (*pictured left*)

## Health & Safety Training:

- Firefighter Functional Fitness

## Monthly Training Hours - 1,532.65 Total



## FIRE PREVENTION BUREAU



During the month of June, the Fire Prevention Bureau received a large intake of plan reviews, therefore an increase to plan review hours. Numerous projects are taking place not only in Lake Zurich, but also at the Deer Park Town Center.

### Construction Meetings:

- Sweetgreen Deer Park
- Victoria's Secret Deer Park
- Pottery Barn Deer Park
- Gere Marie
- 495 Enterprise
- Station 52 Fire Systems

On June 21, the Fire Prevention Bureau and an Engine company participated in the annual "I Am Me" Burn Camp Visitor Day. The Bureau assisted with setting up the Fun Fair for the campers as well as participated in the camp parade. *(Pictured above)*

## Fire Prevention Activities Year-To-Date - 2023

