



Give Where You Live

- ★ Parks
- ★ Arboretum
- ★ Facilities
- ★ Recreational Programming

Make a contribution today that helps to protect and enhance our Lake Zurich parks for present and future generations to come.

Village of Lake Zurich Park & Recreation Dept

200 S. Rand Rd, Lake Zurich, IL 60047
847-438.5146 | LakeZurich.org





★ Village of Lake Zurich Park & Recreation Department

The Village of Lake Zurich owns and maintains a variety of park properties with many unique amenities throughout the Lake Zurich community. Through our parks, residents can improve their physical health through recreational activities and improve their mental health through connecting with nature.

Investing in our parks demonstrates our community's dedication to preserving, protecting and improving natural green areas throughout our community.

Healthy parks help produce healthy people resulting in a more positive, healthy community for all. Your gift will help to protect and enhance our park systems for present and future generations to come.

Thank you for your consideration,
Bonnie Caputo
Village of Lake Zurich Recreation Director



★ Park & Rec Advisory Board Members



Kevin Koch



Tim Andrews



Shawn Bergfalk



Allen Borg



Jeff Carey



Cathy Malloy



Sariah Quimby



★ Park & Recreation Department Vision Statement

Our department is dedicated to enriching the quality of life for our community through our commitment to maximize the value of our parks and services through environmental stewardship and diversity of uses and recreational opportunities across the complete age spectrum.

★ Park & Recreation Department Mission

The mission of the Village of Lake Zurich's programs, services and special events is to provide a diverse program of events that will enhance the already high quality of life in Lake Zurich. The Village of Lake Zurich is proud to offer a wide variety of programs and special events throughout the year that help to create a sense of community and foster civic pride in Lake Zurich residents. There are a variety of opportunities for residents and local businesses to get involved and give back to our community through volunteering, donating or sponsoring our programs and events.

SPECIAL EVENT SPONSORSHIP OPPORTUNITY

The Village of Lake Zurich is proud to offer a wide variety of special events throughout the year that create a sense of community and foster civic pride. The Village of Lake Zurich values its sponsors and provides quality opportunities that businesses will find have a positive return on their investment.

All sponsors enjoy these great benefits:

- ★ Increased brand recognition
- ★ Ability to build community support and brand loyalty
- ★ Direct contact with community leaders
- ★ Feel free to contact the Village of Lake Zurich Park and Recreation Office with any questions or to discuss customized packages targeting your marketing and advertising goals



SNAPSHOT OF OUR GREEN SPACES

\$400,000

Grant Dollars from the IDNR for Paulus Park improvements in 2021 and 2022

247

Acres of natural green space with a variety of trails to be maintained



10

Soccer Fields

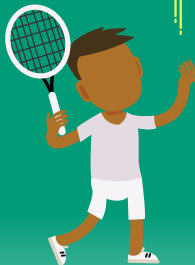
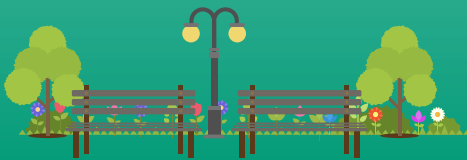


4

Basketball Courts

31

Neighborhood and community parks throughout Lake Zurich



5

Tennis Courts

10

Baseball Fields



22

Playgrounds



10

Park Picnic Shelters



2

Swimming Beaches

6

Sand Volleyball Courts



1

Arboretum, Bird Observatory, Skate Park & Sled Hill



COMMUNITY MAKES IT POSSIBLE

1,600+

Volunteer hours from 450+ individuals for special events, and volunteer work in our parks, trails and open spaces

\$37,895

Cash and in-kind donations for event sponsorship and recreation programming

80+

Lake Zurich businesses and organizations partnered to support events and programming

30+

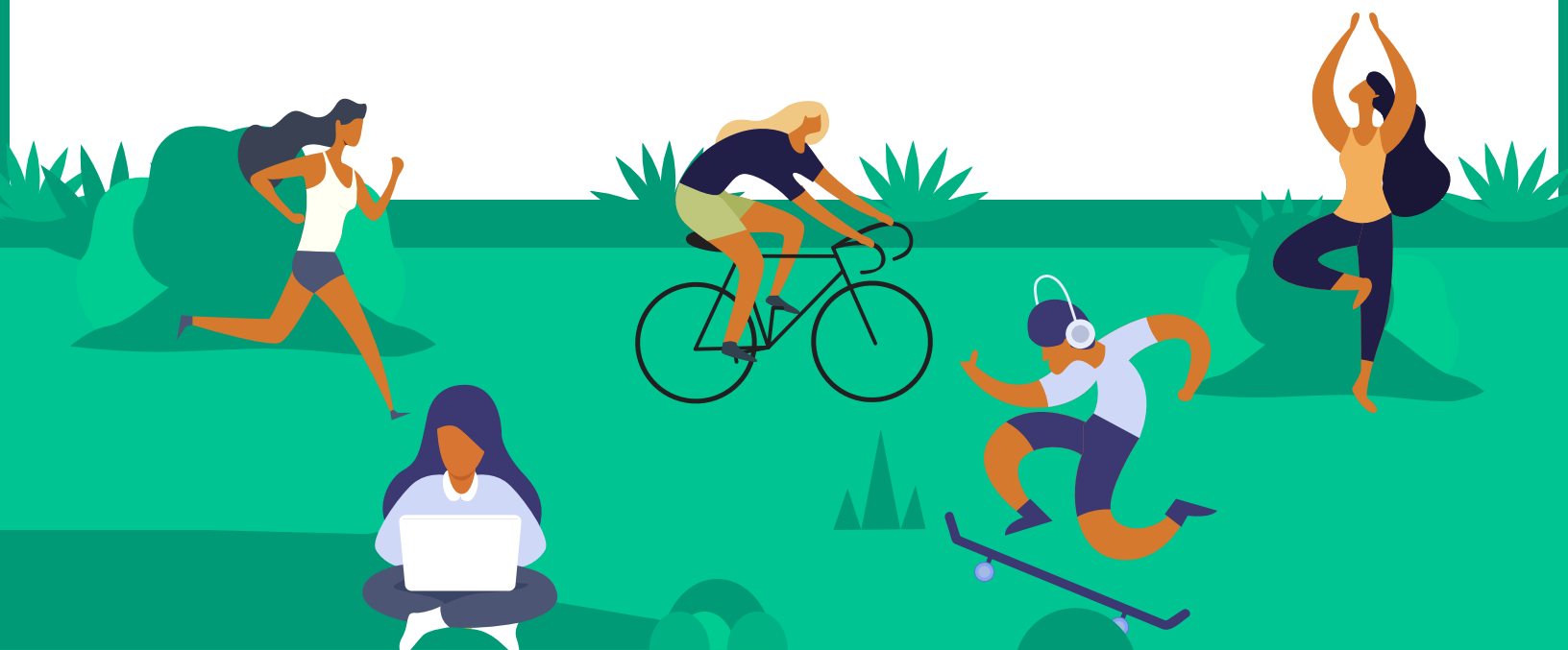
Community special events ran and/or hosted by the Village on park property

3,000+

Youth and adults participate in a variety of park and recreation programs throughout the year

20,000+

Seasonal visits to Paulus & Breezewald Beaches throughout the summer





★ SUPPORT YOUR
NATURAL AREAS

There are many natural, green areas throughout the community in need of preservation and consistent attention.

BIRD OBSERVATORY

This one of a kind location was donated and built for all bird lovers to enjoy. It truly is a place to study the different populations of birds in the community and observe patterns related to behavior.

KEUCHMANN ARBORETUM

Arboretums encourage the planting and conservation of trees and other plants for a greener, healthier and more beautiful Lake Zurich. Kuechmann Arboretum is situated on 8 acres of land featuring Kuechmann Kove, a naturescape for all ages to enjoy and learn.

PARK TRAIL SYSTEMS

Park trail systems are important to our community as they are an enjoyable and safe opportunity for not only transportation but also contribute greatly to an overall enhanced quality of life for the community. They allow residents of Lake Zurich a chance to enjoy the outdoors and get physical and mental health benefits.

YOUR DONATION OF:

\$300

Plants a tree.

\$500

Removes an acre of invasive plant species; preserving native plantings while improving wildlife habitat.

\$1,000

Supports native plantings for a raingarden.

\$1,500

Provides fibar mulching for a park pathway or playground area in the Village.

\$5,000

Supports necessary controlled burns at Village parks and on Village properties.

\$10,000

Produces educational signage for an entire green infrastructure project.

\$25,000

Supports the natural areas of a neighborhood park for one year.

APPLICATION CAN BE FOUND ON LAST PAGE





SUPPORT YOUR

NEIGHBORHOOD & COMMUNITY PARKS

There are a variety of ways to enhance experiences at our community parks. Here are some ways to make a meaningful impact in your park.

YOUR DONATION OF:

\$500

Installs a dog waste station in your park.

\$1,000

Purchases an ADA picnic table.

\$1,250

Memorial bench to be placed in the park and location of your choice.

YOUR DONATION OF:

\$3,500

Purchases a large Funbrella for a beach of your choice to further provide protection from the elements for beach goers.

\$5,000

Purchase of a large lake Wibit inflatable for youth and beach goers to enjoy all Summer long.

\$10,000

Purchase and installation of shade sails at your neighborhood playground.

\$15,000

Resurfacing and repainting of tennis and pickleball courts.

\$20,000

Purchase and installation of a neighborhood park pavilion for public get togethers of all types.

\$50,000

Renovation of a park playground.

APPLICATION CAN BE FOUND ON LAST PAGE



YOUR DONATION OF:

In Kind Donations Programs are always in need of gently used items such as books, puzzles, toys, playing cards, board games, sports equipment, and construction paper

\$500

Covers a field trip for day campers or guest speaker for our camp, preschool or dance programs.

\$750

Support a preschool classroom for the school year supplying the teachers and students with the necessary basics such as cleaning supplies, replacement toys, paper, holiday parties and more! Classroom donors can identify the location to receive the donation (Paulus Park or Buffalo Creek).

\$1,000

Supports our Preschool Graduation providing supplies, signage and t-shirts to the graduates and their family. Donor logo available for printing on the shirt.

\$2,500

Supports the day camp program providing t-shirts to each camper making them more identifiable on the park grounds and when off property at field trips. Donor logo available for printing on the shirt.

\$4,000

Supports the dance annual recitals providing the venue, supplies and volunteer shirts. Donor logo available for printing on shirts and recital materials.

\$6,000

Support technology used in our day camp, preschool and dance programs such as IPADs, Virtual learning subscriptions or Smartboards.



SUPPORT YOUR

RECREATION PROGRAMS

CAMP

Our Summer day camps serve ages preschool through middle school age youth and are accredited through the American Camping Association (ACA). Our camps provide an opportunity to run, play and experience the outdoors. We provide an atmosphere in which children can build self-esteem and where they can grow socially, physically, and intellectually in a safe environment.

EARLY CHILDHOOD/PRESCHOOL

The Yellow Brick Road Preschool program has been a staple in the community for over 30 years, and we are thrilled to be able to continue to serve our families in the community. We are committed to providing quality, safe programming through a balanced curriculum of educational components while learning through play. Offerings include programs for 2 year olds, 3 year olds, 4 year olds and a variety of enrichment programs.

APPLICATION CAN BE FOUND ON LAST PAGE





★ SUPPORT YOUR NEIGHBORS IN NEED

SUPPORT A CHILD IN OUR COMMUNITY!

DANCE

Academy of Performing Arts (APA) offers classes in tap, ballet, jazz, lyrical, contemporary, hip hop and specialty classes. The program offers students an exceptional and progressive dance curriculum with class offerings appropriate for students eighteen months old through high school. APA offers both Summer and a Fall/Winter/Spring sessions.

AQUATICS

The Village is particularly proud of its signature 47-acre lakefront property Paulus Park residing on the westside of Lake Zurich. The park features 400 feet of sandy beach front boasting aquatic amenities such as large lake Wibit inflatables and a spray-ground situated alongside Lakeside Lookout playground, indoor showers and restrooms, a sand volleyball court, trails, covered pavilions, and a skate park. On the other side of the lake, is the second Village owned and operated beach at Breezewald Park, a free Lake Zurich resident only beach residing on a 5.5-acre lakeside park property composed of a playground, lighted trails, covered pavilion, floating fishing pier, indoor restrooms and the award winning Sunset Pavilion Beverage Pavilion.

YOUR DONATION OF:

\$50

Provides a child a session of swim lesson at Paulus Park Beach.

\$150

Gives the opportunity to a local family to utilize the beach all season long.

\$400

Allows a youth the ability to participate to take a dance class (Sept-May) and participate in the Spring Dance Recital.

\$550

Provides a 4 week session of day camp for an elementary aged child.

\$750

Provides a 4 week session of day camp for a middle school aged youth.

\$1,000

Makes preschool for a 3 year old child possible for the full school year.

\$1,500

Makes preschool for a 4 year old child possible for the full school year.

APPLICATION CAN BE FOUND ON LAST PAGE





DONATION PROGRAM APPLICATION

I wish to make the following donation to support the Village of Lake Zurich. I understand that final decisions on the acceptance, use, or placement of all donations will be made in accordance with the Village of Lake Zurich Donation Policy.

VILLAGE OF LAKE ZURICH PARKS & RECREATION DONATION PROPOSAL			
Donor Name:		Date:	
Address:		City/State:	
Organization (if applicable):		Email:	
Item or Project to be Donated:			
Reason for Making Donation:			
Approximate Cost or Worth: \$			
Donor Cost Responsibility: \$		Expected City Cost Responsibility: \$	
How will the Village be expected to maintain donation in the future/estimated cost of maintenance:			
Desired location, if applicable (be specific):			
<small>* Please note: The Village may not be able to place the item in desired location, let us know if there is an alternate location in addition to first priority.</small>			
Expected Completion Date:		Do you wish to be present when installed?	<input type="checkbox"/> Yes <input type="checkbox"/> No
Recognition Plaque Wording (if applicable):			
<p>Donations to the Village of Lake Zurich are considered outright and unrestricted donations. The Village of Lake Zurich does not guarantee permanency of the accepted donation. If a donation must be removed or relocated within the life expectancy of the given donation, Department staff will attempt to notify the donor at the address shown on this form. The donor declares to have read the Village of Lake Zurich Donation Policy and agrees with the conditions set forth in the policy.</p> <p>_____ (Initial) I have read and understand the donation policy.</p>			
Donor Signature:		Date:	





At the Heart of Community



Village of Lake Zurich Park & Recreation Dept

200 S. Rand Rd, Lake Zurich, IL 60047 | 847.438.5146 | LakeZurich.org

