

70 E. Main Street
Lake Zurich, IL 60047



Phone: (847)438-5141
Fax: (847)540-1768
Web: www.volz.org

Park and Recreation Advisory Board

Village Hall Board Room

Tuesday, October 8, 2013

6:30 PM

AGENDA

1. Call to Order
2. Roll Call: Chairperson Kevin Koch; Members: Vice-Chair Tim Andrews, Dawn Brazier, Allen Borg, Jeff Carey, Jon Hert and Greg Weider
3. Approval of Minutes: September 10, 2013
4. Public Comments: Opportunity for residents to briefly comment on matters included on the agenda and/or otherwise of interest to the Park & Recreation Department and Advisory Board.
5. New Business
 - A. Paulus Park Concessionaire Proposal
 - B. Park Maintenance Costs-Breakdown by Park
 - C. Lake Zurich Baseball and Softball Association Affiliate Agreement
 - D. Summer Camp Program Evaluation
6. Old Business
 - A. Paulus Park Playground Equipment Update
7. Treasurer's Report
8. Advisory Board Member Reports
9. Director's Report
 - A. LPOA Liaison
10. Written Communications

Adjournment

Next Meeting Tuesday, November 12, 2013

The Village of Lake Zurich is subject to the requirements of the Americans with Disabilities Act of 1990. Individuals with disabilities who plan to attend this meeting and who require certain accommodations so that they can observe and participate in this meeting, or who have questions regarding the accessibility of the meeting or the Village's facilities, should contact the Village's ADA Coordinator at 847-438-5141 (TDD 847-438-2349) promptly to allow the Village to make reasonable accommodations for those individuals.

Unapproved
**VILLAGE OF LAKE ZURICH
PARK AND RECREATION
ADVISORY BOARD MEETING
SEPTEMBER 10, 2013**

1. Call to Order

The meeting was called to order at 6:34 p.m. by Chair Koch.

2. Roll Call: *Present* - Chairperson Kevin Koch, Vice-Chair Tim Andrews, Board Members Allen Borg, Dawn Brazier, Jon Hert, and Greg Weider. Absent: Jeff Carey. *Staff present* - Recreation Manager Dave Peterson.

3. Approval of Minutes: August 13, 2013

MOTION made by Greg Weider, seconded by Jon Hert, to approve the minutes of the August 13, 2013 Park Advisory Board meetings as submitted.

Voice vote, AYES have it. MOTION CARRIED. Dawn Brazier abstained.

4. Public Comments - None

5. New Business:

A. Paulus Park Playground Equipment Replacement Timeline

Manager Peterson reviewed his memorandum dated September 3, 2013, with the playground equipment replacement timeline and bid document. He will add a notation in the specifications that Lake Zurich is looking for something unique since it is their premier park and include Dawn Brazier's recommendation that sensory-type equipment meeting ADA requirements be included. He added that IRMA did 32 park inspections within the Village and all were in compliance except for the Kid's Kingdom playground.

B. Paulus Park Beach/Sprayground Facility Evaluation

Manager Peterson reviewed his memorandum dated September 3, 2013, that compiles the results of a season pass holder evaluation of the beach and sprayground. Although the results fell below the 4 (very satisfied) benchmark, staff will utilize the feedback and endeavor to improve in all areas. He intends to expand beach uses next year including swim lessons. The evaluation will be extended to all programs to provide valuable information on how to improve programs and facilities.

Tim Andrews would like to see the Chalet used more and perhaps be rented out. Dawn Brazier also supported the idea. Manager Peterson will discuss this with staff and see if the preschool program or camps could be relocated freeing up the Chalet.

6. Old Business:

A. Community Garden Update

Manager Peterson reviewed his memorandum dated September 3, 2013, that provided an update on the community garden. The founders are working on fundraising through a sponsorship drive.

Kevin Koch said he is working with them, and Home Depot has agreed to help them out. They are holding a tool drive at the Farmer's Market to get donations of tools. Additional ways to promote the garden and raise financial support were discussed. Kevin Koch and Tim Andrews volunteered to work with the founders to help market the project.

B. Kuechman Park

Discussion about better utilization of Kuechman Park took place. It was suggested that the house be demolished and a shelter and fire pits added. The park provides lake rights which should also be utilized. Naturalist Mary Kozub is available to put on programs. Neighbors have been encroaching on the park, which needs to be addressed.

7. Treasurer's Report

The Treasurer's report through August 31, 2013 was presented that included revenue, expenses, and the park improvement fund. A brief review of the Park Improvement Fund account and expenses took place. Several advisory board members stated their objection to the use of the Park Improvement Fund to pay for the Countryside West parking lot improvement especially since School District 95 and the soccer association use the lot. They would rather see the money used for the Paulus Park playground equipment.

8. Advisory Board Member Reports

Manager Peterson was asked to include increased utilization of Kuechman Park and review of mowing costs to the October agenda. Public Works Manager Mike Brown will attend the October meeting and discuss strategies for lowering mowing costs.

Farmer's Market – Kevin Koch

Kevin Koch provided an update on the Farmer's Market. He asked if a "winter market" should be considered.

9. Director's Report

Rock-the-Block Event – September 14

Update and overview of the event was provided by Manager Peterson.

Additional Updates: New instructors were hired for the dance programs. There is a proposal from an independent contractor for a German beer garden in Paulus Park. Discussion followed with some members opposed to selling beer in Paulus Park especially during the day on a regular basis. Manager Peterson said the current concessionaire will probably return next year and would be included in any further discussions regarding the beer garden.

10. Written Communications – Articles reviewed.

11. Adjournment

MOTION made by Tim Andrews, seconded by Dawn Brazier, to adjourn the meeting. Voice vote, all in favor. MOTION CARRIED.

The meeting was adjourned at 8:03 p.m.

Submitted by: *Janet McKay, Recording Secretary (per audio recording)*

Approved by: _____
Kevin Koch, Chairman

70 E. Main Street
Lake Zurich, IL 60047



Phone: (847)438-5141
Fax: (847)540-1768
Web: www.volz.org

Park Advisory Board Memorandum

October 8, 2013 Park Advisory Board Agenda Item

To: Park Advisory Board
From: Dave Peterson, Recreation Manager
Date: September 30, 2013
Subject: Paulus Park Concessionaire Proposal

Background/Analysis

Andrew Hartman, of DAS BIER GARDEN, LLC, a local entrepreneur, recently met with staff and shared a concept idea of a German beer garden to be located in Paulus Park during the spring, summer and fall. The idea originated from the Milwaukee metropolitan area where some success has been experienced. Mr. Hartman will provide a PowerPoint presentation sharing his proposal and entertain any questions you might have.

Our risk management company, IRMA, was asked to provide an opinion of this type of business next to a playground and beach operation. Their opinion letter is attached. Hours of operation and proximity would have to play a big role in the decision making process.

Meanwhile, staff met with this summer's concessionaire to recap the season and discuss future intentions. They have made it clear that they would like to return next summer in hopes of better weather and expanding their operations through camp participation, birthday parties and sprayground rentals.

Action and Motion Requested

None

DAS BIER GARDEN, LLC
VILLAGE OF LAKEWOOD, IL 60014 630-849-8444

August 19, 2013

Mr. Dave Peterson, CPRP
Recreation Manager
Village of Lake Zurich
200 South Rand Road
Lake Zurich, IL 60047

RE: Proposed operation of a traditional German Beer Garden in Paulus Park.

Dear Mr. Peterson,

Thank you for taking the time to meet with me last week about the opportunity of operating a traditional German beer garden in Paulus Park. Per your request, below is additional information about the vision and overall concept for the traditional German beer garden.

WHY A GERMAN BEER GARDEN IN PAULUS PARK, LAKE ZURICH

Traditional German beer gardens have always been considered to be a popular meeting place for many people, allowing for an easy informal gathering spot for families and neighbors from all walks of life. Paulus Park in Lake Zurich offers many of the characteristics of a traditional German beer garden including mature trees, wood benches, and family activities, along with food and beverage concessions.

WHAT IT MEANS FOR THE VILLAGE OF LAKE ZURICH

Establishing a traditional German beer garden supports Lake Zurich's rich and unique history from German founders. Beer gardens bring families and friends together around summertime activities in a way that also gets them in touch with the village's German history. The beer garden will make Lake Zurich a "destination". It will bring visitors from neighboring communities as well, who will shop, dine, and enjoy the beach and the park. This opportunity opens the door to other outdoor activities such as live music, community events and family gatherings.

BENEFITS

Some of the benefits to the village are:

- Lake Zurich would be the first traditional German outdoor beer garden in a park in Illinois
- It will generate sales tax revenue for the village, both directly and indirectly
- It will provide a safe and fun family atmosphere
- It will entice visitors from neighboring communities as well as other out of town guests

PROVEN SUCCESSFUL BEER GARDEN MODEL: MILWAUKEE, WISCONSIN

In the spring of 2012, the Milwaukee County Department of Parks, Recreation and Culture opened its doors to the first outdoor German beer garden in Estabrook Park in over 100 years. The Estabrook Park beer garden was so successful in its first year, the Milwaukee County Department of Parks and Recreation has now expanded the beer garden to several other area parks throughout the county. In its first year, the beer garden generated over \$60,000 for the county and park system.

PAULUS PARK BEER GARDEN MODEL

The proposed German beer garden in Paulus Park will be modeled after the successful Estabrook Park's beer garden. The beer garden would open in May and close in October, following an Oktoberfest celebration. The hours of operations would be seven days a week from 11:00 a.m. – 10:00 p.m., weather permitting. No alcohol would be sold past 9:00 p.m. The beer garden would offer true traditional Bavarian style beer shipped directly from Munich, Germany. We would also source locally for traditional German sausages, pretzels and German specialties. We would keep to the highest standards of the true traditional German beer garden culture which is different to any other outdoor restaurant beer gardens. Our price point will be set high enough to attract a more casual, social experience versus other establishments that focus on low-priced specials, more likely leading to intoxication. Families would be encouraged to bring a picnic lunch or dinner to the beer garden, although no outside alcohol would be allowed. The beer garden would also offer family fun events throughout the week. An example would be a family night with live German music and dancing. Attached you will find some conceptual drawings of what the German Beer Garden could look like.

As the beer garden will be privately funded and staffed, there is no negative financial impact to the Village. We ask that the Village of Lake Zurich consider a one year lease agreement for the current concessions building, to start spring of 2014. At the conclusion of the first year, additional lease terms would be negotiable based on demonstrated success. We will work with all parties involved to obtain any and all permits, insurance, and equipment along with incurring all the costs associated in the process to modify the concession building. We are also willing to discuss offering a few standard concession items to meet the current needs of the park.

CONCLUSION

Lake Zurich is a village rich in German history and Paulus Park is the ideal location for this concept. Being the first beer garden of its type in the state will market Lake Zurich as a destination for traditional family entertainment while emphasizing all that the park currently offers the community. We are happy to discuss the opportunity in more detail at your convenience. We do ask that the details of this concept be kept as confidential as possible until the next stage of discussions in order to protect our interest. We look forward to working with you to make this opportunity successful in Lake Zurich.

Respectfully,

DAS BIER GARDEN, LLC.
VILLAGE OF LAKEWOOD, IL 60014 630-849-8444

Andrew Hartman, CEO and Founder

DAS BIER GARDEN, LLC
VILLAGE OF LAKEWOOD, IL 60014

Sky view of the Beer Garden sitting area and service area.



Concession building service area, (pergola optional) and the seating area.



DAS BIER GARTEN

PAULUS PARK

About Us



Tim graduated from Columbia College Chicago, where he studied film and television. After working for a television commercial post production house he found himself working at the Oprah Winfrey Show where he spent 6 years as a video editor. Currently he lives in Geneva, IL where he was born and raised, with his wife Jennifer and two daughters.

Andrew graduated from Western Illinois University, where he studied Broadcast Journalism & Marketing. He's lived in 5 different countries, including Germany. He's been a part of 2 international startup companies, worked with NBC Chicago and has successfully been running his own loyalty marketing business for the past 5 years.

Andrew and his wife live in Lakewood, IL.



Greg and wife Sara have three sons and live in Yorkville, IL. Greg has over 25 years experience in the food and beverage industry, and currently runs two successful restaurants! In 1999 Greg completed a culinary and beverage seminar and tutorial for Bavarian cuisine and brewing. In 2000 Greg completed a culinary course in Savoy regional cooking in Chamonix, France. Greg is versed in ordering, purchasing, scheduling and building cohesive work environments. Greg is especially experienced in interfacing with state and local governments as it pertains to liquor and business licensing.



What is a Beer Garden?



Beer Garden: Originating in Southern Germany, a Beer Garden is an outdoor area in which beer, other drinks, and local food are served

Why Paulus Park?

Paulus Park has a lot to offer...

- *Existing Structure
- *Tree lined sitting area
- *Lake access
- *Children's playground and Splash Park
- *Horse Shoes, Bocce Ball, Volleyball etc...
- *Adequate parking



Community Benefits

Profit: On top of sales tax, 7% of every sale goes back into the Village of Lake Zurich's pocket!

Attraction: The Paulus Park Beer Garden will be a place for the community to come together.

Events: We will build events that encourage community participation, example of such events could include...

- *Grand Opening Celebration
- *Live Music
- *German Dancing
- *Movies In The Park
- *Oktoberfest Celebration

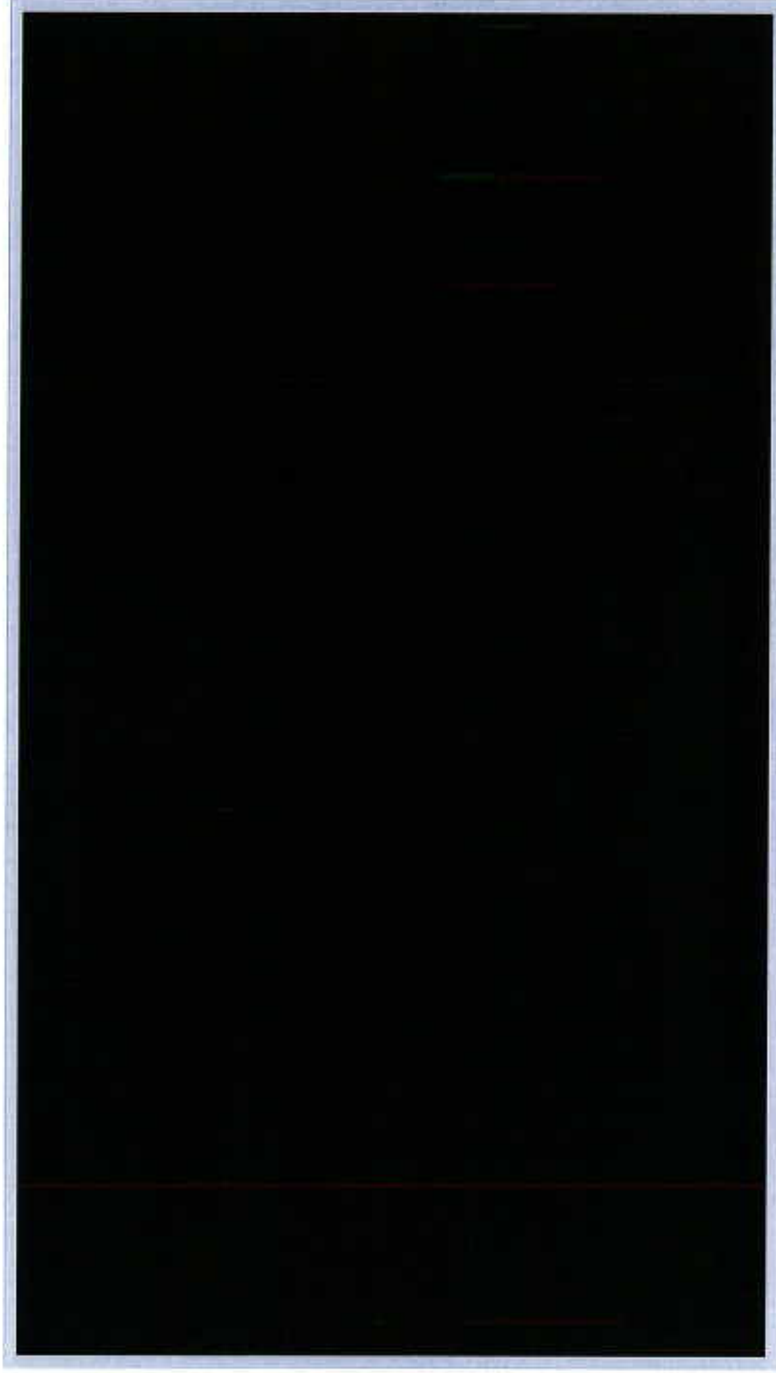
More Community Benefits

Social Media: We will have a presence on all the social media platforms to make sure we're in touch with the community and that they are in touch with us.

Attention: Becoming Illinois first truly "public" beer garden will gain the attention from neighboring communities, increasing revenue for the Village of Lake Zurich!

Employment: The Beer Garden will provide employment opportunities for the community.

A Little Video



A Proven Success

- *After only a year of operation, Milwaukee County approved a 7 year lease extension for the Estabrook Beer Garden!
- *In it's first year, Estabrook Park gave thousands back to Milwaukee County.
- *After the success of Estabrook Park's 2012 season, Milwaukee County approved an additional beer garden location in Hoyt Park.
- *Estabrook Park has gained worldwide attention.
- *Cheap Flights ranked Estabrook Park Beer Garden as one of the top 10 Beer Gardens in the world.

(<http://www.cheapflights.com/news/top-10-beer-gardens-worldwide/>)

We've Got You Covered

- ❖ The Beer Garden in Paulus Park will be fully licensed and insured.
- ❖ Alcohol will be contained strictly to the designated beer garden area. Proper signage will be placed throughout the beer garden as well as throughout the park.
- ❖ Das Bier Garten will maintain and pay the fees for all appropriate federal, state, and local licenses and permits required for its activities.
- ❖ The Village of Lake Zurich assumes no responsibility for any loss or damage to Das Bier Garten's personal property while in use or stored at or on the premises.
- ❖ Das Bier Garten will maintain general and liquor liability, business interruption, workers compensation, and automobile liability insurance as required.
- ❖ All staff will be fully trained and Bassett certified.
- ❖ Management will always be present at Das Bier Garten to maintain a safe and controlled atmosphere.

How It All Works

- *We are building a business with families and the community in mind!
- *We encourage our customers to pack a picnic and spend the day with us at Das Bier Garten.
- *We are creating an atmosphere to resemble that of a traditional beer garden, including German tables, ambient lighting & light music.
- *Weather permitting, we will be open for business from May 1st to November 1st.
- *Das Bier Garten will be a place for families and friends to gather, even for business meetings.
- *Our price point will be set high enough to create a casual, social experience avoiding low-priced specials, which are more likely to lead to intoxication concerns.

How It All Works Continued

*We will operate during community friendly hours.

Sun - Sat: 11am - 9:30pm

Mon - Fri: Beer served only during the hours of 3pm - 8:30pm

Mon - Fri: 11am - 3pm, we will operate only as a concession stand,
catering to the various kids programs in the park

*Did we mention we are all about being family friendly?

Thank You!

Questions or Concerns please contact Andrew Hartman

630-849-8444 ~ andrew.hartman61@gmail.com



October 2, 2013

Mr. Dave Peterson
Recreation Manager
Village of Lake Zurich
200 S. Rand Road
Lake Zurich, IL 60047

Dear Dave:

Thank you for providing us with an opportunity to develop a risk management opinion for the proposed activities being discussed by your Village Board regarding the sale of alcohol at Paulus Park. We previously discussed the change in the Village policy to allow individuals to serve alcohol to their invited guests at their personal events be held at the park. This exposure was mitigated by the requirement that they apply for a permit and are required to provide general and host liquor liability coverage for their events. This process also eliminates exposure to the Village from the sale or serving of alcohol to the general public.

Per the information provided to us, the Village is now considering allowing a vendor to sell and serve alcohol to the general public in Paulus Parks. We have concerns now that the Village will now be expanding its liability exposure by offering the sale of alcoholic beverages at a public park. The beach, playgrounds and spray pad areas are all family recreational facilities, which encourage families and their children to come to Paulus Park. The proposal to now sell and serve alcoholic beverages in these areas will create additional risks and a significant liquor liability exposure. We are concerned that the sale of alcohol will be in close proximity to children's activities and also potentially distract adults from properly supervising their children at your facilities. Additional liability exposures from drowning incidents to boating accidents will also exist from individuals consuming alcohol before swimming and/or boating in the lake. The risk of intoxicated patrons driving after being served at the Village facility will also add significant exposure to the Village. We encourage the Village to reconsider the proposal based on the the above noted additional liquor liability exposures and more importantly, from the overall safety of residents and patrons of Paulus Park.

As always, it is the village's option to allow additional activities within their parks and service areas. If the village decides to move forward with this proposal, we would strongly recommend the following:

- Alcoholic beverages be provided by an experienced, local restaurant and be required to provide several food options.
- All servers be trained and certified in the serving of alcohol.
- Both general liability and liquor liability coverage be required **at a minimum of \$1,000,000 to \$2,000,000 per occurrence.**
- Village be named as additional insured on both the general and liquor liability insurance policies.

- Patrons consuming alcohol be required to remain within a restricted area in the park.
- Locate the restricted alcohol consumption area away from the beach, playground and spray ground and any other child friendly recreational areas.

In summary, we are concerned that the Village is considering the move from allowing individuals to offer alcohol to their invited guests at private parties to the much greater exposure of selling and serving alcohol to the general public in a family friendly recreational area. We recommend that the Village not allow the selling and serving of alcohol to the general public at their recreational facilities. We would be happy to discuss our concerns with you at any time. It is important to also note that the Village's IRMA coverage program provides host liquor liability but not liquor liability insurance for the sale and service to the general public.

Please let us know if we can be of additional assistance in your evaluation process.
Thank you for your time and consideration.

Sincerely,



Dan LeTourneau
Director of Risk Management Services

DLT/ds

Copy to: Roy Jensen, Senior Risk Control Representative

70 E. Main Street
Lake Zurich, IL 60047



Phone: (847)438-5141
Fax: (847)540-1768
Web: www.volz.org

Park Advisory Board Memorandum

October 8, 2013 Advisory Board Agenda Item

To: Park Advisory Board
From: Dave Peterson, Recreation Manager
Date: October 1, 2013
Subject: Park Maintenance Costs-Breakdown by Park

Background/Analysis

The Park Advisory Board directed staff to provide maintenance costs for mowing and fertilizing of the 32 parks owned and operated by the Village. Attached is a breakdown of these costs by park for mowing, fertilizing and some landscaping.

The Community Services Department bids out mowing services for Village owned property that includes all Village owned property, not just the parks. Parks are mowed once a week for approximately 24 weeks out of the year during the spring, summer and fall, depending on weather patterns. Not all of the parks are entirely mowed as the LZBSA and Ela Soccer Association take care of playing field areas. For instance, Staples Park mowing inside of the baseball fence areas is taken care of by the LZBSA. The common areas are the responsibility of the Village.

Discussions should take place on any recommendations the Park Advisory Board may have in decreasing maintenance costs at some of the parks. Mike Brown, Public Works Manager, will be in attendance and can answer questions regarding maintenance costs and the naturalizing of parks.

Action and Motion Requested

None

Village of Lake Zurich Parks and Recreation Facilities

The Lake Zurich park and open space system includes 32 outdoor facilities/parks and 5 indoor facilities distributed across the Village of Lake Zurich. The park system provides a diverse selection of amenities through the variety in size and programming at each facility including athletic fields, picnic shelters, playgrounds and restroom facilities. The smaller parks

also play an important role in the system by serving the neighborhoods which surround them. The smaller parks include small playgrounds, picnic tables, benches and open turf areas. Overall, the Lake Zurich Park System provides a fairly comprehensive system of open green spaces and recreation facilities available for public use.

Table 1.1: Lake Zurich Park and Recreation Facilities

CLASSIFICATION	LOCATION	ACRES
Community Park	Old Mill Grove Park	21.0
	Paulus Park	41.0
Community Park/Special Use Park	Staples Park	10.8
Neighborhood Park	Braemar Park	7.0
	Breezewald Park	5.5
	Bristol Trails Park	7.6
	Buffalo Creek Park	7.6
	Countryside West Park	18.3
	Heatherleigh Park	1.6
	Hunters Creek Park	10.1
	Kuechmann Park	8.3
	Manor Park	2.0
	Oak Ridge Park	26.3
	Orchards Park	2.5
	Sonoma Park	1.2
	Sparrow Ridge Park	3.1
	Wicklow Ballfield	3.4
	Wicklow East Park	0.6
Neighborhood Park/Special Use Park	Countryside East Soccer	10.1
	Countryside West Soccer	4.8
Mini Park	Betty Park	0.3
	Countryside East Park	1.5
	Jonquil Park	0.7
	Quail Run Park	3.3
	Warwick Park	0.5
	Wicklow West Park	0.3
	Zurites Park	2.7
Mini Park/Special Use Park	Celebration Park	0.2
Special Use Park	Bird Observation Area	1.5
	Oak Ridge Marsh Nature Park	18.1
	Promenade	0.5
Greenway	Whispering Creek Trail	9.5

NEW NUMBERING SYSTEM #	LOCATION / DESCRIPTION	ITEM	UNIT	QUANTITY	UNIT COST	COST PER ROTATION	# OF ROTATIONS ANNUALLY	LOCATION COST
201	351 Park	Mowing	Sq. Ft.	165,200	\$0.00055	\$80.86	24	\$2,180.64
202	Betty Drive Park	Mowing	Sq. Ft.	25,300	\$0.00055	\$13.92	24	\$333.96
203	Braemar Park	Mowing	Sq. Ft.	147,217	\$0.00055	\$80.97	24	\$1,943.26
203	Braemar Park	Fertilizer	Each	1	\$294.43000	\$294.43	0	\$0.00
204	Bristol Trail Park	Mowing	Sq. Ft.	248,305	\$0.00055	\$136.57	24	\$3,277.63
204	Bristol Trail Park	Fertilizer	Each	1	\$496.61000	\$496.61	0	\$0.00
205	Buffalo Creek Park	Mowing	Sq. Ft.	1,225,966	\$0.00055	\$674.28	24	\$16,182.75
205	Buffalo Creek Park	Fertilizer	Each	1	\$2,451.93000	\$2,451.93	0	\$0.00
206	Chestnut Corners Park	Mowing	Sq. Ft.	545,107	\$0.00055	\$299.81	24	\$7,195.41
206	Chestnut Corners Park	Fertilizer	Each	1	\$1,090.21000	\$1,090.21	0	\$0.00
207	Countryside West Park	Mowing	Sq. Ft.	590,848	\$0.00055	\$324.97	24	\$7,799.19
207	Countryside West Park	Fertilizer	Each	1	\$1,181.70000	\$1,181.70	0	\$0.00
208	Heatherleigh Park	Mowing	Sq. Ft.	63,980	\$0.00055	\$35.18	24	\$844.27
208	Heatherleigh Park	Fertilizer	Each	1	\$127.92000	\$127.92	0	\$0.00
209	Jonquil Park	Mowing	Sq. Ft.	22,940	\$0.00055	\$12.62	24	\$302.81
209	Jonquil Park	Fertilizer	Each	1	\$45.88000	\$45.88	0	\$0.00
210	Kuechman Park	Mowing	Sq. Ft.	143,811	\$0.00055	\$79.10	24	\$1,898.31
210	Kuechman Park	Fertilizer	Each	1	\$287.62000	\$287.62	0	\$0.00
211	Manor Park	Mowing	Sq. Ft.	315,482	\$0.00055	\$173.52	24	\$4,164.36
211	Manor Park	Fertilizer	Each	1	\$630.96000	\$630.96	0	\$0.00
212	Oak Ridge Marsh Park	Mowing	Sq. Ft.	2,956	\$0.00055	\$1.63	24	\$39.02
212	Oak Ridge Marsh Park	Fertilizer	Each	1	\$5.91000	\$5.91	0	\$0.00
213	Old Mill Grove Park	Mowing	Sq. Ft.	905,355	\$0.00055	\$497.95	24	\$11,950.69
213	Old Mill Grove Park	Fertilizer	Each	1	\$1,810.71000	\$1,810.71	0	\$0.00
214	Orchards Park	Mowing	Sq. Ft.	102,200	\$0.00055	\$56.21	24	\$1,349.04
214	Orchards Park	Fertilizer	Each	1	\$204.40000	\$204.40	0	\$0.00
215	Paulus Park	Landscaping	Sq. Ft.	20,000	\$0.02000	\$400.00	5	\$2,000.00
215	Paulus Park	Mowing	Sq. Ft.	1,175,872	\$0.00055	\$646.73	24	\$15,521.51
215	Paulus Park	Mulch	Each	1	\$160.00000	\$160.00	0	\$0.00
215	Paulus Park	Fertilizer	Each	1	\$2,351.74000	\$2,351.74	0	\$0.00
216	Quail Run Park	Mowing	Sq. Ft.	24,750	\$0.00055	\$13.61	24	\$326.70
216	Quail Run Park	Fertilizer	Each	1	\$49.50000	\$49.50	0	\$0.00
217	Sandlewood Park	Mowing	Sq. Ft.	7,800	\$0.00055	\$4.29	24	\$102.96
217	Sandlewood Park	Fertilizer	Each	1	\$15.60000	\$15.60	0	\$0.00
218	Sparrow Ridge Park	Mowing	Sq. Ft.	144,506	\$0.00055	\$79.48	24	\$1,907.48
218	Sparrow Ridge Park	Fertilizer	Each	1	\$289.01000	\$289.01	0	\$0.00
219	Warwick Park	Mowing	Sq. Ft.	9,088	\$0.00055	\$5.00	24	\$119.96
219	Warwick Park	Fertilizer	Each	1	\$18.18000	\$18.18	0	\$0.00
220	Wicklow Park	Mowing	Sq. Ft.	171,701	\$0.00055	\$94.44	24	\$2,266.45
220	Wicklow Park	Fertilizer	Each	1	\$343.40000	\$343.40	0	\$0.00
221	Zurites Park	Mowing	Sq. Ft.	107,870	\$0.00055	\$59.33	24	\$1,423.88
221	Zurites Park	Fertilizer	Each	1	\$215.74000	\$215.74	0	\$0.00
222	Breezewald Park	Landscaping	Sq. Ft.	400	\$0.02000	\$8.00	5	\$40.00
222	Breezewald Park	Mowing	Sq. Ft.	119,663	\$0.00055	\$66.61	24	\$1,579.55
222	Breezewald Park	Mulch	Each	1	\$40.00000	\$40.00	0	\$0.00
222	Breezewald Park	Fertilizer	Each	1	\$239.33000	\$239.33	0	\$0.00
223	Celebration Park	Fertilizer	Each	1	\$14.80000	\$14.80	0	\$0.00
223	Celebration Park	Mowing	Sq. Ft.	7,400	\$0.00055	\$4.07	24	\$89.68
223	Celebration Park	Mulch	Each	1	\$79.00000	\$79.00	0	\$0.00
223	Celebration Park	Landscaping	Sq. Ft.	750	\$0.02000	\$15.00	5	\$75.00
224	Grand Ave Park	Mowing	Sq. Ft.	19,900	\$0.00055	\$10.95	24	\$262.68

NEW NUMBERING SYSTEM #	LOCATION / DESCRIPTION	ITEM	UNIT	QUANTITY	UNIT COST	COST PER ROTATION	# OF ROTATIONS ANNUALLY	LOCATION COST
201	351 Park	Mowing	Sq. Ft.	165,200	\$0.00055	\$90.86	24	\$2,180.64
202	Betty Drive Park	Mowing	Sq. Ft.	25,300	\$0.00055	\$13.92	24	\$333.96
203	Braemar Park	Mowing	Sq. Ft.	147,217	\$0.00055	\$80.97	24	\$1,943.26
203	Braemar Park	Fertilizer	Each	1	\$294.43000	\$294.43	0	\$0.00
204	Bristol Trail Park	Mowing	Sq. Ft.	248,305	\$0.00055	\$136.57	24	\$3,277.63
204	Bristol Trail Park	Fertilizer	Each	1	\$496.61000	\$496.61	0	\$0.00
205	Buffalo Creek Park	Mowing	Sq. Ft.	1,225,966	\$0.00055	\$674.28	24	\$16,182.75
205	Buffalo Creek Park	Fertilizer	Each	1	\$2,451.93000	\$2,451.93	0	\$0.00
206	Chestnut Corners Park	Mowing	Sq. Ft.	545,107	\$0.00055	\$299.81	24	\$7,195.41
206	Chestnut Corners Park	Fertilizer	Each	1	\$1,090.21000	\$1,090.21	0	\$0.00
207	Countryside West Park	Mowing	Sq. Ft.	590,848	\$0.00055	\$324.97	24	\$7,799.19
207	Countryside West Park	Fertilizer	Each	1	\$1,181.70000	\$1,181.70	0	\$0.00
208	Heatherleigh Park	Mowing	Sq. Ft.	63,960	\$0.00055	\$35.18	24	\$844.27
208	Heatherleigh Park	Fertilizer	Each	1	\$127.92000	\$127.92	0	\$0.00
209	Jonquil Park	Mowing	Sq. Ft.	22,940	\$0.00055	\$12.62	24	\$302.81
209	Jonquil Park	Fertilizer	Each	1	\$45.88000	\$45.88	0	\$0.00
210	Kuechman Park	Mowing	Sq. Ft.	143,811	\$0.00055	\$79.10	24	\$1,898.31
210	Kuechman Park	Fertilizer	Each	1	\$287.62000	\$287.62	0	\$0.00
211	Manor Park	Mowing	Sq. Ft.	315,482	\$0.00055	\$173.52	24	\$4,164.36
211	Manor Park	Fertilizer	Each	1	\$630.96000	\$630.96	0	\$0.00
212	Oak Ridge Marsh Park	Mowing	Sq. Ft.	2,956	\$0.00055	\$1.63	24	\$39.02
212	Oak Ridge Marsh Park	Fertilizer	Each	1	\$5.91000	\$5.91	0	\$0.00
213	Old Mill Grove Park	Mowing	Sq. Ft.	905,355	\$0.00055	\$497.95	24	\$11,950.69
213	Old Mill Grove Park	Fertilizer	Each	1	\$1,810.71000	\$1,810.71	0	\$0.00
214	Orchards Park	Mowing	Sq. Ft.	102,200	\$0.00055	\$56.21	24	\$1,349.04
214	Orchards Park	Fertilizer	Each	1	\$204.40000	\$204.40	0	\$0.00
215	Paulus Park	Landscaping	Sq. Ft.	20,000	\$0.02000	\$400.00	5	\$2,000.00
215	Paulus Park	Mowing	Sq. Ft.	1,175,872	\$0.00055	\$646.73	24	\$15,521.51
215	Paulus Park	Mulch	Each	1	\$160.00000	\$160.00	0	\$0.00
215	Paulus Park	Fertilizer	Each	1	\$2,351.74000	\$2,351.74	0	\$0.00
216	Quail Run Park	Mowing	Sq. Ft.	24,750	\$0.00055	\$13.61	24	\$326.70
216	Quail Run Park	Fertilizer	Each	1	\$49.50000	\$49.50	0	\$0.00
217	Sandlewood Park	Mowing	Sq. Ft.	7,800	\$0.00055	\$4.29	24	\$102.96
217	Sandlewood Park	Fertilizer	Each	1	\$15.60000	\$15.60	0	\$0.00
218	Sparrow Ridge Park	Mowing	Sq. Ft.	144,506	\$0.00055	\$79.48	24	\$1,907.48
218	Sparrow Ridge Park	Fertilizer	Each	1	\$289.01000	\$289.01	0	\$0.00
219	Wanwick Park	Mowing	Sq. Ft.	9,088	\$0.00055	\$5.00	24	\$119.96
219	Wanwick Park	Fertilizer	Each	1	\$18.18000	\$18.18	0	\$0.00
220	Wicklow Park	Mowing	Sq. Ft.	171,701	\$0.00055	\$94.44	24	\$2,266.45
220	Wicklow Park	Fertilizer	Each	1	\$343.40000	\$343.40	0	\$0.00
221	Zurites Park	Mowing	Sq. Ft.	107,870	\$0.00055	\$59.33	24	\$1,423.88

70 E. Main Street
Lake Zurich, IL 60047



Phone: (847)438-5141
Fax: (847)540-1768
Web: www.volz.org

Park Advisory Board Memorandum

October 8, 2013 Advisory Board Agenda Item

To: Park Advisory Board
From: Dave Peterson, Recreation Manager
Date: September 27, 2013
Subject: Lake Zurich Baseball and Softball Association Affiliate Agreement

Background/Analysis

The Village of Lake Zurich has never entered into a formal agreement with the Lake Zurich Baseball and Softball Association (LZBSA) over the many years of the relationship. Although a healthy relationship, it is good practice to have an agreement in place to protect parties, their officers and volunteers. Staff met with two representatives of the LZBSA to discuss the usage and needs of ball fields in the future. The majority (at least 51%) of the participants in the LZBSA is residents of Lake Zurich and as such is considered an affiliate of the Village of Lake Zurich.

The purpose of an affiliate agreement is to realize the best interests of the community and have both entities work in unison to coordinate, integrate and consolidate the planning and provision of recreational facilities and programs when basic functions are compatible and a public benefit may be derived.

The attached affiliate agreement defines the following important areas between the two entities:

1. Criteria and Conditions
2. Facility Usage
3. Rental/Usage Fee
4. Improvement, Repair, Replacement and Acquisition Costs
5. Insurance and Indemnification
6. No Third Party Beneficiary
7. Termination and Duration

Staff is working with LZBSA on a final draft to be presented to both boards for approval.

Action and Motion Requested

Gain consensus on the acceptance and execution of an Affiliate Agreement with the Lake Zurich Baseball and Softball Association.

Affiliate Agreement

Village of Lake Zurich and the Lake Zurich Baseball and Softball Association

PURPOSE

The Village of Lake Zurich (hereafter "Village") recognizes that certain organizations exist within the community whose purposes are to serve and enhance recreational opportunities for a specific purpose and group. These organizations are separate and independent from the Village and provide for their own leadership, organizational and operational structure. Although the stated missions of the organizations may differ, public investment in public recreational facilities and programs creates a mutually beneficial environment in which to provide quality recreation for all the individuals served by the parties, as well as the general public.

The Village recognizes that at times it is in the best interest of the community that the Village work with outside organizations in coordinating, integrating and consolidating the planning and provision of recreational facilities and programs when basic functions are compatible and a public benefit may be derived. Through working relationships with outside organizations and joint efforts, each party can contribute to greater public service without relinquishing their separate identities or any of their individual responsibilities.

To this end, the Village is willing to establish a working relationship and cooperative agreement with the Lake Zurich Baseball and Softball Association (hereafter "Affiliate"). With this agreement, the parties will define the working relationship, mutual expectations, and individual responsibilities. However, this agreement cannot be considered absolute; but shall serve as a frame of reference. Standards outlined herein insure that the parties' concept of joint planning, use, and maintenance is followed to the maximum extent possible, while retaining the essential freedom of discretion, decision and action in planning, developing and maintaining recreational programs.

I. Criteria and Conditions

1. The Village agrees to:
 - a. Cut the grass outside of the ball field play areas (common areas) at the following Village owned parks: Staples, Hunters Creek, Braemar and Wicklow Ball Field (Oakwood).
 - b. Reserve the right to schedule those unused dates for use by another organization.
2. The Affiliate shall provide its own leadership, structure, and must delegate operational duties to its membership.
3. The Affiliate shall conduct its own financial business and be financially self-supporting.
4. The Affiliate shall have its own volunteer governing board with adopted written bylaws or guidelines to guide the board in policy-making decisions, and:
 - a. Is a not-for-profit corporation or organization dedicated to offering and promoting recreational activities which are compatible with and supplement Village programs.
 - b. At least 51% of the members/participants of the Affiliate must be residents of the Village of Lake Zurich.
 - c. Provide an annual detailed budget to the Village of Lake Zurich showing all anticipated revenue and expenditures, and
 - d. Provide an annual audit or detailed report which documents the Affiliate's current financial standings, including operational revenues, expenditures, and financial reserves.
5. The Affiliate shall provide a list of officers.
6. The Affiliate shall designate both a liaison and alternate liaison and provide the individuals' telephone numbers and other contact information to the Village.
7. The Affiliate agrees and understands that neither the Affiliate nor its officials, officers, members, employees or volunteers (collectively "Affiliate") are entitled to any benefits or protections afforded employees or volunteers of the Village and are not bound by any obligations as employees of the Village. The Affiliate will not be covered under provisions of the unemployment compensation insurance of the Village or the workers' compensation insurance of the Village and that any injury or

property damage arising out of any Affiliate activity will be the Affiliate's sole responsibility and not the Village's. Also, it is understood that the Affiliate is not protected as an employee or as a person acting as an agent or employee under the provisions of the general liability insurance of the Village and therefore, the Affiliate will be solely responsible for its own actions. The Village will in no way defend the Affiliate in matters of liability.

8. Affiliate shall fully cooperate with any investigation conducted by or on behalf of the Village and/or the Intergovernmental Risk Management Agency "IRMA".
9. The Affiliate shall not represent itself or members of the Affiliate as employees, volunteers, or agents of the Village.
10. The Affiliate or members of the Affiliate will not advertise or solicit participants using the name or logo of the Village without prior written permission of the Village.
11. All fees, charges, monies, and expenditures shall be handled by the Affiliate itself, with its own accounts in the group's name. The group shall have a written policy regarding refunds. All requests for refunds shall be addressed in a timely manner.
12. The Affiliate acknowledges and agrees that the group is responsible for any and all expenses, including, but not limited to, the provision of equipment and materials related to the Affiliate's activities and use of Village property and facilities, unless otherwise specified and agreed to in writing.
13. Activities, programs, and events sponsored by Affiliate shall not, other than to adhere to specific membership guidelines, program requirements, or minimum residency standards, discriminate against or exclude any individual, for participation for reasons of race, color, creed, national origin, sex, sexual orientation, disability, or any other characteristic protected by local, state, or federal law.
14. The Affiliate agrees to conduct criminal background checks for all employees and volunteers eighteen years of age or older and who directly supervise individuals under the age of eighteen (18) years or age. The Affiliate is solely responsible for determining whether any conviction disqualifies any employee/volunteer.
15. The Affiliate agrees to cross-reference all staff, employees and volunteers with the federal and state of Illinois Child Offender Databases which is part of the background check process.
16. The Affiliate understands and agrees that it solely responsible for determining whether any staff, employee, or volunteer is qualified and suitable for any Affiliate

position and/or activity and that the Village is not responsible for any hiring or retention decision.

17. Registration for membership/tryouts must not exclude residents of the Village.
18. The Affiliate shall comply with all applicable local, state, and federal laws, including, but not limited to the Illinois Human Rights Act, the American with Disabilities Act, and the Civil Rights Act of 1964. The Affiliate shall base employment, volunteer, and participation criteria upon personal capabilities and qualifications without discrimination because of race, color, religion, sexual orientation, sex (except as an appropriate division for athletics programming), national origin, age (except as an appropriate division of programming levels for youth athletics programming), marital status, or any other protected characteristic as established by law.
19. The Affiliate and Village agree to meet annually reviewing the agreement and evaluating the season by September 30.

II. Facility Use

20. The Village hereby grants a license to use and operate Staples, Hunters Creek, Chestnut Corner, Braemar and Wicklow (Oakwood) baseball fields as is presently constituted from prior use by the Affiliate.
21. The Village acknowledges that the baseball fields are important to the Affiliate in conducting its own financial business and maintaining its financial self-sufficiency in accordance with Section I.2. above.
22. Priority scheduling for the Village ball fields will be as follows:
 - a. Affiliate
 - b. Village of Lake Zurich
 - c. *Community Groups
 - d. *Residents
 - e. *Non-Residents

*These classified groups will be charged a fee based on the approved policy. If one of these groups rents the fields for baseball practices, games or camps, the rental

revenue will be collected and kept by the Village. The Village agrees to contact Affiliate to coordinate the rental schedule.

23. It is the sole responsibility of the Affiliate to determine whether any facility, field, or other location is safe, suitable, and/or appropriate for any intended use.
24. The Affiliate shall inspect each facility, field, or other location prior to and subsequent to each use and shall promptly report any unsafe condition (subsurface conditions, holes in sports fields, broken equipment, etc.) to the Village.
25. The Affiliate is solely responsible for providing supervision and security services, as needed, for any and all Affiliate activities.
26. The Village does not assume any responsibility, care, custody, or control of any Affiliate property or equipment brought upon or stored upon Village property. The Affiliate is solely responsible for the safety and/or security of any property or equipment brought upon or stored on Village property.
27. The Affiliate shall adhere to all applicable facility and Village ordinances, rules, regulations, policies, and procedures. .
28. The use of Village meeting rooms is based on availability and Village scheduling concerns. The Village retains the right to move, cancel or reschedule meetings based upon Village needs.

III. Rental/Usage Fee

1. The Village shall keep in force at all times during the term of this agreement Commercial General Liability Insurance or self-insurance through participation in IRMA, specifically including bodily injury, personal injury and property damage with limits of not less than \$1,000,000 per occurrence, written on an occurrence basis.

IV. Improvement, Repair, Replacement and Acquisition Costs

Purchases must be approved by a majority vote by the Village and Affiliate Boards according to the respective agencies purchasing policies.

1. The Affiliate agrees to pay fifty percent (50%) of any American with Disabilities Act dugout and field costs associated with the Village Transition Plan and Village agrees to pay fifty percent (50%).
2. The Affiliate agrees to pay one hundred percent (100%) of any bullpen, field and fencing costs and Village agrees to pay zero percent (0%), unless Village utilizes field

for programming. A mutually agreed upon percentage will be used for shared field usage.

3. The Affiliate agrees to pay one hundred (100%) for costs associated with any equipment storage facility.
4. Park District agrees to pay one hundred percent (100%) for paths and parking lots not exclusive of Affiliate usage.

V. Advertisement

The Village will provide the Affiliate with a maximum of one-quarter page of advertising in their seasonal program guide. The Affiliate is responsible for providing information for the advertisement, and the Village will design the advertisement with consultation of the group. A copy of the Village's Program Guide Production Timeline, which established deadlines for promotional copy, will be given the group on an annual basis.

VI. Insurance and Indemnification

The Affiliate shall procure and maintain for the duration of this agreement, the following insurance against claims for injuries to persons or damages to property which may arise from or in connection with any of Affiliate's activities:

A. Commercial General and Umbrella Liability Insurance

Affiliate shall maintain commercial general liability (CGL) of \$1,000,000 per Occurrence and \$2,000,000 Aggregate

CGL insurance shall be written on Insurance Services Office (ISO) occurrence form CG 00 01 10 93, or a substitute form providing equivalent coverage, and shall cover liability arising from premises, operations, independent contractors, products-completed operations, personal injury and advertising injury, liability assumed under an insured contract (including the tort liability of another assumed in a business contract), and shall not be endorsed to exclude claims arising from athletic participation.

If the Affiliate intends on distributing, selling, serving or furnishing alcoholic beverages, liquor liability coverage (including Dram Shop coverage) shall also be provided with a limit of not less than \$1,000,000 per occurrence.

The Village shall be included as an insured under the CGL, using ISO additional insured endorsement CG 20 26 or a substitute providing equivalent coverage, and under the commercial umbrella, if any. This insurance shall apply as primary insurance with respect to any other insurance or self-insurance afforded to the Village. Any insurance or self-

insurance maintained by the Village shall be excess of the Affiliate's insurance and shall not contribute with it.

The CGL policy must include individuals for athletic participation.

B. Workers Compensation Insurance

If applicable, the Affiliate shall maintain workers compensation and employers liability insurance. The commercial umbrella and/or employers liability limits shall not be less than \$1,000,000 each accident for bodily injury by accident or \$1,000,000 each employee for bodily injury by disease.

C. Other

If the Village has not been included as an insured under the CGL using ISO additional insured endorsement CG 20 26 under the Commercial General and Umbrella Liability Insurance required in this agreement, the Affiliate waives all rights against the Village and its officers, officials, employees, volunteers and agents for recovery of damages arising out of or incident to the Affiliate's use of any Village property or facility.

D. General Insurance Provisions

1. Evidence of Insurance

Prior to exercising any rights under this Agreement, the Affiliate shall furnish the Village with a certificate(s) of insurance and applicable policy endorsement(s), executed by a duly authorized representative of each insurer, showing compliance with the insurance requirements set forth above.

All certificates shall provide for 30 days' written notice to Agency prior to the cancellation or material change of any insurance referred to therein except for notices of cancellation for non-payment which shall be 10 (ten days). Written notice to Agency shall be by certified mail, return receipt requested.

Failure of the Village to demand such certificate, endorsement or other evidence of full compliance with these insurance requirements or failure of the Village to identify a deficiency from evidence that is provided shall not be construed as a waiver of the Affiliate's obligation to maintain such insurance.

The Village shall have the right, but not the obligation, of prohibiting the Affiliate from using the premises until such certificates or other evidence that insurance has been placed in complete compliance with these requirements is received and approved by Village.

Failure to maintain the required insurance may result in termination of this agreement at Village's option.

The Affiliate shall provide certified copies of all insurance policies required above within 10 days of the Village's written request for said copies.

2. Acceptability of Insurers

For insurance companies which obtain a rating from A.M. Best, that rating should be no less than A VII using the most recent edition of the A.M. Best's Key Rating Guide. If the Best's rating is less than A VII or a Best's rating is not obtained, the Village has the right to reject insurance written by an insurer it deems unacceptable.

3. Cross-Liability Coverage

If the Affiliate's liability policies do not contain the standard ISO separation of insured's provision, or a substantially similar clause, they shall be endorsed to provide cross-liability coverage.

4. Deductibles and Self-Insured Retentions

Any deductibles or self-insured retentions must be declared to the Village. At the option of the Village, the Affiliate may be asked to eliminate such deductibles or self-insured retentions as respects to the Village, its officers, officials, employees, volunteers and agents or required to procure a bond guaranteeing payment of losses and other related costs including but not limited to investigations, claim administration and defense expenses.

E. Indemnification

The Affiliate shall indemnify and hold harmless the Village and its officers, officials, employees, volunteers and agents from and against all claims, damages, losses and expenses, including but not limited to legal fees (reasonable attorney's and paralegals' fees and court costs), arising from or in any way connected with (I) the conduct or management of the premises or of any business or activity therein, or any work or thing whatsoever done, or condition created in or about the premises during the term of this agreement; (ii) any act, omission wrongful act or negligence of the Affiliate or any of the Affiliate's partners, directors, officials, officers, agents, employees, members, volunteers, participants, invitees, licensees, contractors, or subcontractors; (iii) any accident, injury or damage whatsoever occurring in or upon any Village property or facility, regardless of whether or not

it is caused in part by a party indemnified hereunder. Such obligation shall not be construed to negate, abridge, or otherwise reduce any other right or obligation of indemnity which would otherwise exist as to any party or person described in this Paragraph. The Affiliate shall similarly protect, indemnify and hold and save harmless the Village, its officers, officials, employees, volunteers and agents against and from any and all claims, costs, causes, actions and expenses including but not limited to legal fees, incurred by reason of the Affiliate's breach of any of its obligations under, or the Affiliate's default of, any provision of this agreement.

VI. No Third Party Beneficiary

This Agreement is entered into solely for the benefit of the contracting parties, and nothing in this Agreement is intended, either expressly or impliedly, to provide any right or benefit of any kind whatsoever to any person or entity who is not a party to this Agreement, or to acknowledge, establish or impose any legal duty to any third party.

VII. Termination and Duration

- a. The initial term of this Agreement shall commence on the date hereof and end on December 31, 2016. Thereafter, this Agreement shall be deemed automatically renewed for successive one year periods unless either party shall advise the other party in writing of its intention not to renew the Agreement at least 90 days prior to the annual renewal date of its intention not to renew the agreement, or unless the Parties otherwise mutually agree to terminate the Agreement.
- b. The Village retains the right to alter the terms and conditions of this agreement or to terminate this agreement at any time and for any reason, including, but not limited to misconduct of the Affiliate or for misuse of property, for purposes deemed necessary for public safety or preservation of property, if termination serves the interests of Village residents, or because the Affiliate has breached any of its obligations under this Agreement.

The Affiliate may terminate this agreement by providing a minimum of 45 days written notice.

- c. The Agreement may be amended by the written approval of both Parties.

IN WITNESS WHEREOF, each of the Parties has caused this Agreement to be executed by a duly authorized officer thereof as of the date first above written.

Authorized Signature of
Lake Zurich Baseball & Softball Association

Authorized Signature of Village of Lake Zurich

Date

Date

EXHIBIT A

Parameters of Cost Sharing for Affiliate and Village of Lake Zurich Projects
Improvements, Repairs, Replacement and Acquisition Costs

LZBSA%	VILLAGE%	Project/Asset	Timing/Scope
TBD	TBD	ADA Work	Varies
100%	0%	Bullpen, field and fencing areas	10-15 Years
100%	0%	Equipment storage facility	Varies
0%	100%	Paths and parking lots not exclusive of Affiliate usage	TBD by Village

70 E. Main Street
Lake Zurich, IL 60047



Phone: (847)438-5141
Fax: (847)540-1768
Web: www.volz.org

Park Advisory Board Memorandum

October 8, 2013 Advisory Board Agenda Item

To: Park Advisory Board
From: Dave Peterson, Recreation Manager
Date: September 27, 2013
Subject: Summer Camp Program Evaluation

Background/Analysis

Staff sent out a summer camp evaluation to all of the 2013 participants in an effort to receive feedback on the quality of the program and guest services. The evaluation was distributed via our recreation software, thereby eliminating the use of paper and making it more convenient for our guests. There were 19 responses received, providing feedback in areas of value of program, guest service experience, counselor knowledge, enthusiasm of staff, safety and program organization. A 1-5 scale was utilized with 1 being Very Dissatisfied and 5 being Extremely Satisfied.

Attached are the results broken down by question, the computer generated summary results and an actual survey for your review. Staff has set a benchmark score of 4 (Very Satisfied) for all of its facilities and programs and will continue to administer the evaluation at the end of each program.

Benchmarks were met in five of the twelve categories with the average score of the camp program being 3.9. Staff will utilize this feedback in an effort to continuously improve.

Action and Motion Requested

None

Summer Camp Survey Results-2013

Scale 1-5 with 1 Very Dissatisfied and 5 Extremely Satisfied

<u>Measurement</u>	<u>Benchmark</u>	<u>Actual</u>
Overall value of program	4.00	4.00
Registration experience	4.00	4.20
Treated participants fairly	4.00	4.00
Knowledge of program	4.00	3.90
Enthusiasm/Encouragement	4.00	3.70
Took safety precautions	4.00	3.90
Program organization	4.00	3.80
Convenient schedule	4.00	4.20
Class size	4.00	3.80
Facilities cleanliness	4.00	3.50
Information available online	4.00	3.80
Meets description of program	4.00	4.00
Average Score	4.00	3.90
Enroll in program again (yes/no)	<u>Yes</u> 14	<u>No</u> 4



Showing all submissions.

All [Last 90 Days](#) [Last 30 Days](#) [Last 7 Days](#)

Park & Recreation Program Evaluation

Actions

SUBMISSIONS ANALYTICS

Name of Program

Short Answer

19 of 19 Answered (100.0%)

[See All Responses](#)

19 of 19 Answered (100.0%)

Instructor's/Counselor's Name

Short Answer

16 of 19 Answered (84.2%)

[See All Responses](#)

16 of 19 Answered (84.2%)

Date of Program

Short Answer

19 of 19 Answered (100.0%)

[See All Responses](#)

19 of 19 Answered (100.0%)

How did you learn about the program?

Checkbox

Newspaper (0 responses, 0.0%)

Other (0 responses, 0.0%)

Seasonal Brochure (9 responses, 47.4%)

Village Email Notice (0 responses, 0.0%)

Village Newsletter (1 response, 5.3%)

Village Website (2 responses, 10.5%)

19 of 19 Answered (100.0%)

Would you enroll in this program again?

Radio Buttons

No (4 responses, 21.1%)

Yes (14 responses, 73.7%)

18 of 19 Answered (94.7%)

Overall Value

Radio Buttons

Dissatisfied (0 responses, 0.0%)

Extremely Satisfied (9 responses, 47.4%)

Satisfied (15 responses, 78.3%)

Very Dissatisfied (1 response, 5.3%)

Very Satisfied (4 responses, 21.1%)

19 of 19 Answered (100.0%)

Value Comments

Short Answer

10 of 19 Answered (52.6%)

[See All Responses](#)

10 of 19 Answered (52.6%)

Registration Experience

Radio Buttons

Dissatisfied (0 responses, 0.0%)

Extremely Satisfied (7 responses, 36.8%)

Satisfied (3 responses, 15.8%)

Very Dissatisfied (0 responses, 0.0%)

Very Satisfied (3 responses, 15.8%)

19 of 19 Answered (100.0%)

Registration Comments

7 of 19 Answered (36.8%)

Short Answer

7 of 19 Answered (36.8%)

[See All Responses](#)**Treated participants fairly**

19 of 19 Answered (100.0%)

Radio Buttons

Dissatisfied (1 response, 5.3%)**Extremely Satisfied** (9 responses, 47.4%)**Satisfied** (3 responses, 15.8%)**Very Dissatisfied** (1 response, 5.3%)**Very Satisfied** (5 responses, 26.3%)**Knowledge of program**

19 of 19 Answered (100.0%)

Radio Buttons

Dissatisfied (2 responses, 10.5%)**Extremely Satisfied** (9 responses, 47.4%)**Satisfied** (3 responses, 15.8%)**Very Dissatisfied** (1 response, 5.3%)**Very Satisfied** (4 responses, 21.1%)**Enthusiasm/Encouragement**

19 of 19 Answered (100.0%)

Radio Buttons

Dissatisfied (2 responses, 10.5%)**Extremely Satisfied** (7 responses, 36.8%)**Satisfied** (2 responses, 10.5%)**Very Dissatisfied** (2 responses, 10.5%)**Very Satisfied** (6 responses, 31.6%)**Took safety precautions**

19 of 19 Answered (100.0%)

Radio Buttons

Dissatisfied (1 response, 5.3%)**Extremely Satisfied** (7 responses, 36.8%)**Satisfied** (7 responses, 36.8%)**Very Dissatisfied** (0 responses, 0.0%)**Very Satisfied** (4 responses, 21.1%)**Program organization**

19 of 19 Answered (100.0%)

Radio Buttons

Dissatisfied (3 responses, 15.8%)**Extremely Satisfied** (6 responses, 31.6%)**Satisfied** (3 responses, 15.8%)**Very Dissatisfied** (1 response, 5.3%)**Very Satisfied** (4 responses, 21.1%)**Convenient schedule**

19 of 19 Answered (100.0%)

Radio Buttons

Dissatisfied (1 response, 5.3%)**Extremely Satisfied** (9 responses, 47.4%)**Satisfied** (4 responses, 21.1%)**Very Dissatisfied** (0 responses, 0.0%)**Very Satisfied** (5 responses, 26.3%)**Class size**

19 of 19 Answered (100.0%)

Radio Buttons

Dissatisfied (1 response, 5.3%)**Extremely Satisfied** (6 responses, 31.6%)**Satisfied** (7 responses, 36.8%)**Very Dissatisfied** (0 responses, 0.0%)**Very Satisfied** (5 responses, 26.3%)**Facilities cleanliness**

19 of 19 Answered (100.0%)

Radio Buttons

Dissatisfied (1 response, 5.3%)**Extremely Satisfied** (6 responses, 31.6%)

Satisfied (4 responses, 21.1%)
Very Dissatisfied (3 responses, 15.8%)
Very Satisfied (5 responses, 26.3%)

Information available online

19 of 19 Answered (100.0%)

Radio Buttons

Dissatisfied (2 responses, 10.5%)
Extremely Satisfied (5 responses, 26.3%)
Satisfied (4 responses, 21.1%)
Very Dissatisfied (0 responses, 0.0%)
Very Satisfied (8 responses, 42.1%)

Meets description of program

19 of 19 Answered (100.0%)

Radio Buttons

Dissatisfied (0 responses, 0.0%)
Extremely Satisfied (0 responses, 0.0%)
Satisfied (5 responses, 26.3%)
Very Dissatisfied (1 response, 5.3%)
Very Satisfied (13 responses, 68.3%)

Other Comments

14 of 19 Answered (73.7%)

Long Answer

14 of 19 Answered (73.7%)

[See All Responses](#)

Park & Recreation Dept.
200 S. Rand Road
Lake Zurich, IL 60047



Phone: (847) 438-5146
Fax: (847) 540-5081
Web Site: www.volz.org

Dear 2013 Camp Participants,

The Park & Recreation Department staff hopes you have enjoyed your summer and look forward to a great school year ahead!

In an effort to continuously improve, the Park and Recreation Department staff is asking for your feedback with your son/daughter's camp experience. Please take time to answer a short survey and submit to us. This is an opportunity for staff to make changes based on your feedback.

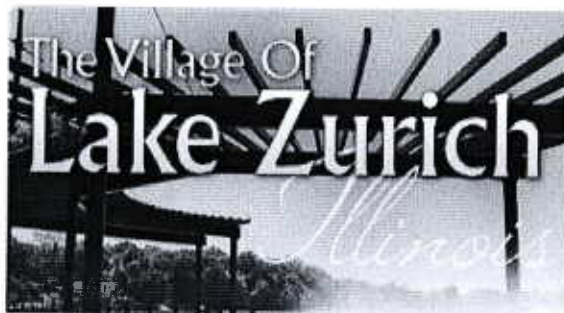
Please click on the following Camp survey link:

<http://lakezurich.org/FormCenter/Surveys-5/Park--Recreation-Program-Evaluation-35>

One winner will randomly be chosen from the survey participants and will receive a 50% discount on a preapproved future program registration.

Thank you for participating in summer camp through the Park & Recreation Department.

Monica Perry, Recreation Supervisor



[About Us](#) | [Government](#) | [Departments](#) | [Doing Business](#)

You are here: [Home](#) > Evaluate Village Services

[Lake Zurich Area Farmers Market](#)

[Meeting Webcast \(TV4\)](#)

[Pay Online](#)

[Agendas & Minutes](#)

[Building Permits](#)

[Park & Recreation Program
Brochure](#)

[Register for Park Programs](#)

[Lake Zurich Water Management](#)

[Requests / Bids](#)

[Freedom of Information \(FOI\)](#)

[Emerald Ash Borer Info](#)

[Canadian National](#)

[Community Events Calendar](#)

[Newsline](#)

[Mosquito Abatement](#)

[E-Services](#)

[Jobs](#)

[Community Notification](#)

[Feedback Form](#)

[Municipal Codes](#)

[E-News Signup](#)

[Emergency Alert](#)



[Clean Air Counts](#)

[Lake County Traffic Website](#)

[Ela Area Public Library](#)

[Ela Township](#)

[Lake Zurich Area Chamber of
Commerce](#)

[Lake County](#)



Evaluate Village Services

Search Forms:

Select a Category



By [signing in or creating an account](#), some fields will auto-populate with your information and your submitted forms will be saved and accessible to you.

Park & Recreation Program Evaluation

Introduction

Thank you for your recent participation in a Village of Lake Zurich Park & Recreation program. Our staff would appreciate your input regarding your experience, as your comments will assist us in making continuous improvements and provide our guests with the best possible experience. The information you provide will be confidential.

Name of Program

Instructor's/Counselor's
Name

Date of Program

How did you learn about the program?

- ☐ Newspaper
- ☐ Seasonal Brochure
- ☐ Village Newsletter
- ☐ Village Website
- ☐ Village Email Notice
- ☐ Other

Would you enroll in this program again?

☐ Yes ☐ No

Overall Value

How would you rate the value of the program fee you were charged?

- ☐ Extremely Satisfied
- ☐ Very Satisfied
- ☐ Satisfied
- ☐ Dissatisfied
- ☐ Very Dissatisfied

Value Comments

Village of Lake Zurich
70 East Main Street
Lake Zurich, IL 60047

Registration Comments

Instructor/Counselor

Please rate the instructor/counselor in the following categories

Treated participants fairly

- ☐ Extremely Satisfied
☐ Very Satisfied
☐ Satisfied
☐ Dissatisfied
☐ Very Dissatisfied

Knowledge of program

- ☐ Extremely Satisfied
☐ Very Satisfied
☐ Satisfied
☐ Dissatisfied
☐ Very Dissatisfied

Enthusiasm/Encouragement

- ☐ Extremely Satisfied
☐ Very Satisfied
☐ Satisfied
☐ Dissatisfied
☐ Very Dissatisfied

Took safety precautions

- ☐ Extremely Satisfied
☐ Very Satisfied
☐ Satisfied
☐ Dissatisfied
☐ Very Dissatisfied

Program

Please rate the following categories

Program organization

- ☐ Extremely Satisfied
☐ Very Satisfied
☐ Satisfied
☐ Dissatisfied
☐ Very Dissatisfied

Convenient schedule

- ☐ Extremely Satisfied
☐ Very Satisfied
☐ Satisfied
☐ Dissatisfied
☐ Very Dissatisfied

Class size

- ☐ Extremely Satisfied
☐ Very Satisfied
☐ Satisfied
☐ Dissatisfied
☐ Very Dissatisfied

Facilities cleanliness

- ☐ Extremely Satisfied
☐ Very Satisfied
☐ Satisfied
☐ Dissatisfied
☐ Very Dissatisfied

Information available online

- ☐ Extremely Satisfied
☐ Very Satisfied
☐ Satisfied
☐ Dissatisfied
☐ Very Dissatisfied

Meets description of program

- ☐ Extremely Satisfied
☐ Very Satisfied
☐ Satisfied
☐ Dissatisfied
☐ Very Dissatisfied

Other Comments

Please let us know any other thoughts that come to mind

☒ Receive email copy

Email address

70 E. Main Street
Lake Zurich, IL 60047



Phone: (847)438-5141
Fax: (847)540-1768
Web: www.volz.org

Park Advisory Board Memorandum

October 8, 2013 Park Advisory Board Agenda Item

To: Park Advisory Board
From: Dave Peterson, Recreation Manager
Date: September 30, 2013
Subject: Paulus Park Playground Equipment Update

Background/Analysis

The process of bidding out the Paulus Park playground equipment has been slightly modified from the September memorandum. Staff has obtained six playground designers to participate in an RFP, providing concept designs for the Paulus Park playground equipment. The six designers include: Game Time, Nutoys, Miracle Recreation, Little Tikes, Playworld and Leather and Associates. Rather than bidding out the project first, concept drawings will be available to the community to review and provide feedback. The concept drawings are due on October 23 and must follow the budget, square footage and safety standard guidelines provided.

Staff will hold a community input meeting in early November and also allow those who cannot attend the option of voting on their favorite concept drawing via the web site. The drawings and community input will be shared with the Park Advisory Board at the November 12 meeting.

The project will be bid out in November with a bid opening in mid-December. The awarded bidder will be required to have the playground equipment in place on or before May 1.

Action and Motion Requested

None

Revenues

Through September 30, 2013

SUNGARD PENTAMATION - FINANCE PLUS V 4.0
 DATE: 10/02/13
 TIME: 08:02:52

VILLAGE OF LAKE ZURICH
 REVENUE AUDIT TRAIL

PAGE NUMBER: 1
 AUDIT41

SELECTION CRITERIA: orgn.fund="101"
 ACCOUNTING PERIOD: 5/14

(INACTIVE ACCOUNTS INCLUDED)
 SORTED BY: FUND,DEPARTMENT,PROGRAM,ACCOUNT,ACCOUNT,PERIOD
 TOTALED ON: FUND,DEPARTMENT,ACCOUNT,PERIOD
 PAGE BREAKS ON: FUND,DEPARTMENT

ACCOUNT	DATE	T/C	RECEIVE	REFERENCE	PAYER/VENDOR	BUDGET	RECEIPTS	RECEIVABLES DESCRIPTION	CUMULATIVE BALANCE
101-67-900-10167900 - PARK & REC									
4121			PROPERTY TAX-SRA			180,000.00	96,559.56	.00 BEGINNING BALANCE	
	09/05/13	19-5		20141120			34,476.75	9/5 REAL EST TX DISTRTN	
	09/12/13	19-5		20141200			17,705.67	9/12 REAL ESTATE TAX DIST	
	09/26/13	19-5		20141306			29,626.13	9/26 REAL EST TX DSTRBTN	
	TOTAL PERIOD 5					.00	81,808.55	.00	1,631.89
	TOTAL PROPERTY TAX-SRA					180,000.00	178,368.11	.00	1,631.89
4262			REIMBURSEMENTS			.00	1,361.50	.00 BEGINNING BALANCE	
	TOTAL PERIOD 5					.00	.00	.00	-1,361.50
	TOTAL REIMBURSEMENTS					.00	1,361.50	.00	-1,361.50
4851			DONATIONS			500.00	6,000.00	.00 BEGINNING BALANCE	
	TOTAL PERIOD 5					.00	.00	.00	-5,500.00
	TOTAL DONATIONS					500.00	6,000.00	.00	-5,500.00
4856			CASH OVER/SHORT			.00	.00	.00 BEGINNING BALANCE	
	TOTAL PERIOD 5					.00	.00	.00	.00
	TOTAL CASH OVER/SHORT					.00	.00	.00	.00
4857			MISC INCOME			1,000.00	800.00	.00 BEGINNING BALANCE	
	09/12/13	19-5		20141208			400.00	RECTRAC 9/12/13	
	TOTAL PERIOD 5					.00	400.00	.00	-200.00
	TOTAL MISC INCOME					1,000.00	1,200.00	.00	-200.00

101-67-935-10167935 - DANCE

* THERE IS A NOTE ASSOCIATED WITH THIS TRANSACTION

SUNGARD PENTAMATION - FINANCE PLUS V 4.0
 DATE: 10/02/13
 TIME: 08:02:52

VILLAGE OF LAKE ZURICH
 REVENUE AUDIT TRAIL

PAGE NUMBER: 2
 AUDIT41

SELECTION CRITERIA: orgn.fund="101"
 ACCOUNTING PERIOD: 5/14

(INACTIVE ACCOUNTS INCLUDED)
 SORTED BY: FUND,DEPARTMENT,PROGRAM,ACCOUNT,ACCOUNT,PERIOD

TOTALED ON: FUND,DEPARTMENT,ACCOUNT,PERIOD

PAGE BREAKS ON: FUND,DEPARTMENT

ACCOUNT DATE	T/C	RECEIVE	REFERENCE	PAYER/VENDOR	BUDGET	RECEIPTS	RECEIVABLES DESCRIPTION	CUMULATIVE BALANCE
4561		PARK PROGRAM FEES			79,000.00	17,232.24	.00 BEGINNING BALANCE	
09/03/13	19-5		20141116			172.50	RECTRAC 9/3/13	
09/04/13	19-5		20141165			1,227.50	RECTRAC 9/4/13	
09/05/13	19-5		20141166			172.50	RECTRAC 9/5/13	
09/09/13	19-5		20141182			345.00	RECTRAC 9-9-13	
09/11/13	19-5		20141207			500.50	RECTRAC 9/11/13	
09/12/13	19-5		20141208			189.00	RECTRAC 9/12/13	
09/16/13	19-5		20141237			-172.50	RECTRAC 9/16/13	
09/16/13	19-5		20141243			172.50	ADJ 9/16 RECTRAC	
09/18/13	19-5		20141270			172.50	RECTRAC 9/18/13	
09/19/13	19-5		20141271			266.50	RECTRAC 9/19/13	
09/23/13	19-5		20141288			75.00	RECTRAC 9/23/13	
		TOTAL PERIOD 5			.00	3,121.00	.00	58,646.76
		TOTAL PARK PROGRAM FEES			79,000.00	20,353.24	.00	58,646.76
101-67-940-10167940 - PRESCHOOL								
4561		PARK PROGRAM FEES			153,000.00	24,053.00	.00 BEGINNING BALANCE	
09/01/13	19-5		20141114			300.00	RECTRAC 9/1/13	
09/02/13	19-5		20141115			500.00	RECTRAC 9/2/13	
09/03/13	19-5		20141116			6,487.00	RECTRAC 9/3/13	
09/04/13	19-5		20141165			2,179.00	RECTRAC 9/4/13	
09/05/13	19-5		20141166			225.00	RECTRAC 9/5/13	
09/06/13	19-5		20141180			2,846.00	RECTRAC 9-6-13	
09/09/13	19-5		20141182			1,507.00	RECTRAC 9-9-13	
09/11/13	19-5		20141207			787.00	RECTRAC 9/11/13	
09/13/13	19-5		20141236			504.00	RECTRAC 9/13/13	
09/17/13	19-5		20141254			291.00	RECTRAC 9-17-13	
09/20/13	19-5		20141279			1,902.00	RECTRAC 9/20/13	
09/24/13	19-5		20141298			100.00	RECTRAC 9/24/13	
09/26/13	19-5		20141335			468.00	RECTRAC 9-25-13	
09/27/13	19-5		20141336			247.00	RECTRAC 9-26-13	
09/30/13	19-5		20141337			84.00	RECTRAC 9-27-13	
		TOTAL PERIOD 5			.00	18,427.00	.00	110,520.00
		TOTAL PARK PROGRAM FEES			153,000.00	42,480.00	.00	110,520.00

* THERE IS A NOTE ASSOCIATED WITH THIS TRANSACTION

SUNGARD PENTAMATION - FINANCE PLUS V 4.0
 DATE: 10/02/13
 TIME: 08:02:52

VILLAGE OF LAKE ZURICH
 REVENUE AUDIT TRAIL

PAGE NUMBER: 3
 AUDIT41

SELECTION CRITERIA: orgn.fund="101"
 ACCOUNTING PERIOD: 5/14

(INACTIVE ACCOUNTS INCLUDED)
 SORTED BY: FUND,DEPARTMENT,PROGRAM,ACCOUNT,ACCOUNT,PERIOD

TOTALED ON: FUND,DEPARTMENT,ACCOUNT,PERIOD

PAGE BREAKS ON: FUND,DEPARTMENT

ACCOUNT DATE	T/C	RECEIVE	REFERENCE	PAYER/VENDOR	BUDGET	RECEIPTS	RECEIVABLES DESCRIPTION	CUMULATIVE BALANCE
101-67-945-10167945 - YOUTH PROGRAMS								
4561		PARK PROGRAM FEES			1,800.00	1,567.00	.00 BEGINNING BALANCE	
	09/18/13	19-5	20141270			76.00	RECTRAC 9/18/13	
	TOTAL PERIOD 5				.00	76.00	.00	157.00
	TOTAL PARK PROGRAM FEES				1,800.00	1,643.00	.00	157.00
101-67-960-10167960 - CAMPS								
4561		PARK PROGRAM FEES			133,500.00	119,029.70	.00 BEGINNING BALANCE	
	09/21/13	19-5	20141280			387.50	RECTRAC 9/21/13	
	TOTAL PERIOD 5				.00	387.50	.00	14,082.80
	TOTAL PARK PROGRAM FEES				133,500.00	119,417.20	.00	14,082.80
101-67-965-10167965 - ATHLETICS								
4393		PARK FEES			.00	1,213.00	.00 BEGINNING BALANCE	
	09/05/13	19-5	20141166			50.00	RECTRAC 9/5/13	
	09/30/13	19-5	20141337			50.00	RECTRAC 9-27-13	
	TOTAL PERIOD 5				.00	100.00	.00	-1,313.00
	TOTAL PARK FEES				.00	1,313.00	.00	-1,313.00
4561		PARK PROGRAM FEES			57,625.00	31,437.08	.00 BEGINNING BALANCE	
	09/02/13	19-5	20141115			278.00	RECTRAC 9/2/13	
	09/03/13	19-5	20141116			1,661.10	RECTRAC 9/3/13	
	09/04/13	19-5	20141165			1,017.00	RECTRAC 9/4/13	
	09/05/13	19-5	20141166			75.00	RECTRAC 9/5/13	
	09/06/13	19-5	20141180			700.00	RECTRAC 9-6-13	
	09/08/13	19-5	20141181			89.00	RECTRAC 9-8-13	
	09/09/13	19-5	20141182			213.00	RECTRAC 9-9-13	
	09/10/13	19-5	20141206			112.00	RECTRAC 9/10/13	
	09/11/13	19-5	20141207			499.00	RECTRAC 9/11/13	
	09/12/13	19-5	20141208			282.00	RECTRAC 9/12/13	

* THERE IS A NOTE ASSOCIATED WITH THIS TRANSACTION

SUNGARD PENTAMATION - FINANCE PLUS V 4.0
 DATE: 10/02/13
 TIME: 08:02:52

VILLAGE OF LAKE ZURICH
 REVENUE AUDIT TRAIL

PAGE NUMBER: 4
 AUDIT41

SELECTION CRITERIA: orgn.fund="101"
 ACCOUNTING PERIOD: 5/14

(INACTIVE ACCOUNTS INCLUDED)
 SORTED BY: FUND,DEPARTMENT,PROGRAM,ACCOUNT,ACCOUNT,PERIOD
 TOTALED ON: FUND,DEPARTMENT,ACCOUNT,PERIOD
 PAGE BREAKS ON: FUND,DEPARTMENT

ACCOUNT DATE	T/C	RECEIVE	REFERENCE	PAYER/VENDOR	BUDGET	RECEIPTS	RECEIVABLES	DESCRIPTION	CUMULATIVE BALANCE
09/13/13	19-5		20141236			112.00		RECTRAC 9/13/13	
09/16/13	19-5		20141237			290.00		RECTRAC 9/16/13	
09/17/13	19-5		20141254			412.00		RECTRAC 9-17-13	
09/18/13	19-5		20141270			225.00		RECTRAC 9/18/13	
09/19/13	19-5		20141271			567.00		RECTRAC 9/19/13	
09/20/13	19-5		20141279			75.00		RECTRAC 9/20/13	
09/21/13	19-5		20141280			69.50		RECTRAC 9/21/13	
09/23/13	19-5		20141288			220.00		RECTRAC 9/23/13	
09/24/13	19-5		20141298			114.39		RECTRAC 9/24/13	
09/30/13	19-5		20141337			94.00		RECTRAC 9-27-13	
TOTAL PERIOD 5					.00	7,104.99	.00		19,082.93
TOTAL PARK PROGRAM FEES					57,625.00	38,542.07	.00		19,082.93
101-67-970-10167970 - AQUATICS									
4392	PARK PERMITS				28,500.00	19,333.50	.00	BEGINNING BALANCE	
TOTAL PERIOD 5					.00	.00	.00		9,166.50
TOTAL PARK PERMITS					28,500.00	19,333.50	.00		9,166.50
4393	PARK FEES				46,500.00	36,595.00	.00	BEGINNING BALANCE	
09/01/13	19-5		20141114			655.00		RECTRAC 9/1/13	
09/02/13	19-5		20141115			442.00		RECTRAC 9/2/13	
09/16/13	19-5		20141237			5.00		RECTRAC 9/16/13	
TOTAL PERIOD 5					.00	1,102.00	.00		8,803.00
TOTAL PARK FEES					46,500.00	37,697.00	.00		8,803.00
4856	CASH OVER/SHORT				.00	.00	.00	BEGINNING BALANCE	
TOTAL PERIOD 5					.00	.00	.00		.00
TOTAL CASH OVER/SHORT					.00	.00	.00		.00

101-67-975-10167975 - SPECIAL INTEREST & EVENTS

* THERE IS A NOTE ASSOCIATED WITH THIS TRANSACTION

SUNGARD PENTAMATION - FINANCE PLUS V 4.0
 DATE: 10/02/13
 TIME: 08:02:52

VILLAGE OF LAKE ZURICH
 REVENUE AUDIT TRAIL

PAGE NUMBER: 5
 AUDIT41

SELECTION CRITERIA: orgn.fund="101"
 ACCOUNTING PERIOD: 5/14

(INACTIVE ACCOUNTS INCLUDED)
 SORTED BY: FUND,DEPARTMENT,PROGRAM,ACCOUNT,ACCOUNT,PERIOD
 TOTALED ON: FUND,DEPARTMENT,ACCOUNT,PERIOD
 PAGE BREAKS ON: FUND,DEPARTMENT

ACCOUNT	DATE	T/C	RECEIVE	REFERENCE	PAYER/VENDOR	BUDGET	RECEIPTS	RECEIVABLES	DESCRIPTION	CUMULATIVE BALANCE
4392			PARK PERMITS			.00	.00	.00	BEGINNING BALANCE	
			TOTAL PERIOD 5			.00	.00	.00		.00
			TOTAL PARK PERMITS			.00	.00	.00		.00
4393			PARK FEES			8,500.00	15,360.00	.00	BEGINNING BALANCE	
			TOTAL PERIOD 5			.00	.00	.00		-6,860.00
			TOTAL PARK FEES			8,500.00	15,360.00	.00		-6,860.00
4561			PARK PROGRAM FEES			6,225.00	3,421.25	.00	BEGINNING BALANCE	
	09/04/13	19-5		20141165			105.00		RECTRAC 9/4/13	
	09/06/13	19-5		20141180			250.00		RECTRAC 9-6-13	
	09/09/13	19-5		20141182			201.00		RECTRAC 9-9-13	
	09/10/13	19-5		20141206			85.00		RECTRAC 9/10/13	
	09/11/13	19-5		20141207			45.00		RECTRAC 9/11/13	
	09/12/13	19-5		20141208			145.00		RECTRAC 9/12/13	
	09/16/13	19-5		20141237			105.00		RECTRAC 9/16/13	
	09/17/13	19-5		20141254			45.00		RECTRAC 9-17-13	
	09/18/13	19-5		20141270			45.00		RECTRAC 9/18/13	
			TOTAL PERIOD 5			.00	1,026.00	.00		1,777.75
			TOTAL PARK PROGRAM FEES			6,225.00	4,447.25	.00		1,777.75
4562			CONCERT SALES			2,500.00	.00	.00	BEGINNING BALANCE	
	09/17/13	19-5		20141254			99.98		RECTRAC 9-17-13	
			TOTAL PERIOD 5			.00	99.98	.00		2,400.02
			TOTAL CONCERT SALES			2,500.00	99.98	.00		2,400.02
4563			PARK SPECIAL EVENTS			9,150.00	8,782.00	.00	BEGINNING BALANCE	
			TOTAL PERIOD 5			.00	.00	.00		368.00

* THERE IS A NOTE ASSOCIATED WITH THIS TRANSACTION

SUNGARD PENTAMATION - FINANCE PLUS V 4.0
 DATE: 10/02/13
 TIME: 08:02:52

VILLAGE OF LAKE ZURICH
 REVENUE AUDIT TRAIL

PAGE NUMBER: 6
 AUDIT41

SELECTION CRITERIA: orgn.fund="101"
 ACCOUNTING PERIOD: 5/14

(INACTIVE ACCOUNTS INCLUDED)
 SORTED BY: FUND,DEPARTMENT,PROGRAM,ACCOUNT,ACCOUNT,PERIOD

TOTALED ON: FUND,DEPARTMENT,ACCOUNT,PERIOD

PAGE BREAKS ON: FUND,DEPARTMENT

ACCOUNT DATE	T/C	RECEIVE	REFERENCE	PAYER/VENDOR	BUDGET	RECEIPTS	RECEIVABLES DESCRIPTION	CUMULATIVE BALANCE
TOTAL PARK SPECIAL EVENTS					9,150.00	8,782.00	.00	368.00
4564		PARK OUTINGS			500.00	.00	.00 BEGINNING BALANCE	
TOTAL PERIOD 5					.00	.00	.00	500.00
TOTAL PARK OUTINGS					500.00	.00	.00	500.00
4860		BLOCK PARTY DONATIONS			.00	.00	.00 BEGINNING BALANCE	
		09/06/13	24-5			2,000.00	.00 CASH RECEIPTS INTERFACE	
		09/20/13	24-5			621.00	.00 CASH RECEIPTS INTERFACE	
		09/23/13	24-5			1,760.00	.00 CASH RECEIPTS INTERFACE	
TOTAL PERIOD 5					.00	4,381.00	.00	-4,381.00
TOTAL BLOCK PARTY DONATIONS					.00	4,381.00	.00	-4,381.00
101-67-985-10167985 - FITNESS								
4561		PARK PROGRAM FEES			8,000.00	2,010.25	.00 BEGINNING BALANCE	
		09/03/13	19-5	20141116		168.00	RECTRAC 9/3/13	
		09/04/13	19-5	20141165		113.00	RECTRAC 9/4/13	
		09/06/13	19-5	20141180		59.00	RECTRAC 9-6-13	
		09/10/13	19-5	20141206		380.15	RECTRAC 9/10/13	
		09/11/13	19-5	20141207		29.95	RECTRAC 9/11/13	
		09/13/13	19-5	20141236		41.30	RECTRAC 9/13/13	
		09/18/13	19-5	20141270		61.60	RECTRAC 9/18/13	
TOTAL PERIOD 5					.00	853.00	.00	5,136.75
TOTAL PARK PROGRAM FEES					8,000.00	2,863.25	.00	5,136.75
101-67-990-10167990 - RENTALS (FACILITY/PARK)								
4393		PARK FEES			5,000.00	5,658.00	.00 BEGINNING BALANCE	
		09/04/13	19-5	20141165		60.00	RECTRAC 9/4/13	
		09/16/13	19-5	20141237		-90.00	RECTRAC 9/16/13	
		09/16/13	19-5	20141243		90.00	ADJ 9/16 RECTRAC	

* THERE IS A NOTE ASSOCIATED WITH THIS TRANSACTION

SUNGARD PENTAMATION - FINANCE PLUS V 4.0
 DATE: 10/02/13
 TIME: 08:02:52

VILLAGE OF LAKE ZURICH
 REVENUE AUDIT TRAIL

PAGE NUMBER: 7
 AUDIT41

SELECTION CRITERIA: orgn.fund="101"
 ACCOUNTING PERIOD: 5/14

(INACTIVE ACCOUNTS INCLUDED)
 SORTED BY: FUND,DEPARTMENT,PROGRAM,ACCOUNT,ACCOUNT,PERIOD
 TOALED ON: FUND,DEPARTMENT,ACCOUNT,PERIOD
 PAGE BREAKS ON: FUND,DEPARTMENT

ACCOUNT	DATE	T/C	RECEIVE	REFERENCE	PAYER/VENDOR	BUDGET	RECEIPTS	RECEIVABLES	DESCRIPTION	CUMULATIVE BALANCE
TOTAL PERIOD 5						.00	60.00	.00		-718.00
TOTAL PARK FEES						5,000.00	5,718.00	.00		-718.00
4853	RENTAL INCOME					3,400.00	1,605.00	.00	BEGINNING BALANCE	
	09/12/13	19-5		20141208			70.00		RECTRAC 9/12/13	
	09/13/13	19-5		20141236			40.00		RECTRAC 9/13/13	
	09/20/13	19-5		20141279			240.00		RECTRAC 9/20/13	
	09/27/13	19-5		20141336			120.00		RECTRAC 9-26-13	
TOTAL PERIOD 5						.00	470.00	.00		1,325.00
TOTAL RENTAL INCOME						3,400.00	2,075.00	.00		1,325.00
101-67-995-10167995 - CONCESSIONS										
4565	PARK CONCESSIONS					2,000.00	.00	.00	BEGINNING BALANCE	
TOTAL PERIOD 5						.00	.00	.00		2,000.00
TOTAL PARK CONCESSIONS						2,000.00	.00	.00		2,000.00
4566	POP MACHINES					1,500.00	.00	.00	BEGINNING BALANCE	
TOTAL PERIOD 5						.00	.00	.00		1,500.00
TOTAL POP MACHINES						1,500.00	.00	.00		1,500.00
4856	CASH OVER/SHORT					.00	.00	.00	BEGINNING BALANCE	
TOTAL PERIOD 5						.00	.00	.00		.00
TOTAL CASH OVER/SHORT						.00	.00	.00		.00
TOTAL DEPARTMENT - PARKS & RECREATION						728,200.00	511,435.10	.00		216,764.90
TOTAL FUND -						728,200.00	511,435.10	.00		216,764.90

* THERE IS A NOTE ASSOCIATED WITH THIS TRANSACTION

SUNGARD PENTAMATION - FINANCE PLUS V 4.0
DATE: 10/02/13
TIME: 08:02:52

VILLAGE OF LAKE ZURICH
REVENUE AUDIT TRAIL

PAGE NUMBER: 8
AUDIT41

SELECTION CRITERIA: orgn.fund="101"
ACCOUNTING PERIOD: 5/14

(INACTIVE ACCOUNTS INCLUDED)
SORTED BY: FUND,DEPARTMENT,PROGRAM,ACCOUNT,ACCOUNT,PERIOD

TOTALED ON: FUND,DEPARTMENT,ACCOUNT,PERIOD

PAGE BREAKS ON: FUND,DEPARTMENT

ACCOUNT DATE	T/C	RECEIVE	REFERENCE	PAYER/VENDOR	BUDGET	RECEIPTS	RECEIVABLES DESCRIPTION	CUMULATIVE BALANCE
TOTAL REPORT					728,200.00	511,435.10	.00	216,764.90

* THERE IS A NOTE ASSOCIATED WITH THIS TRANSACTION

Expenditures

Through September 30, 2013

SUNGARD PENTAMATION - FINANCE PLUS V 4.0
 DATE: 10/02/13
 TIME: 07:57:18

VILLAGE OF LAKE ZURICH
 EXPENDITURE AUDIT TRAIL

PAGE NUMBER: 1
 AUDIT21

SELECTION CRITERIA: orgn.fund="101" 1=1
 ACCOUNTING PERIOD: 5/14

SORTED BY: FUND,DEPARTMENT,PROGRAM,ACCOUNT

TOTALED ON: FUND,DEPARTMENT

PAGE BREAKS ON: FUND,DEPARTMENT

FUND - 101 -
 BUDGET CODE - 10136042 - PARK MAINTENANCE

ACCOUNT DATE	T/C	PO NUMBER	REFERENCE	VENDOR	BUDGET	EXPENDITURES	ENCUMBRANCES	DESCRIPTION	CUMULATIVE BALANCE
101-36-042-10136042 - PARK MAINTENANCE									
5110	FULL TIME				157,399.00	48,702.32	.00	BEGINNING BALANCE	
09/13/13	19-5		091313			5,922.32		Pro091313	
	TOTAL FULL TIME				157,399.00	54,624.64	.00		102,774.36
5111	PART TIME				.00	.00	.00	BEGINNING BALANCE	
	TOTAL PART TIME				.00	.00	.00		.00
5112	SEASONAL				16,000.00	9,805.81	.00	BEGINNING BALANCE	
	TOTAL SEASONAL				16,000.00	9,805.81	.00		6,194.19
5113	OVERTIME				8,500.00	7,016.25	.00	BEGINNING BALANCE	
09/13/13	19-5		091313			882.81		Pro091313	
	TOTAL OVERTIME				8,500.00	7,899.06	.00		600.94
5121	IMRF				22,973.00	7,639.33	.00	BEGINNING BALANCE	
09/13/13	19-5		091313			933.03		Pro091313	
	TOTAL IMRF				22,973.00	8,572.36	.00		14,400.64
5122	SOCIAL SECURITY				11,278.00	4,013.13	.00	BEGINNING BALANCE	
09/13/13	19-5		091313			417.73		Pro091313	
	TOTAL SOCIAL SECURITY				11,278.00	4,430.86	.00		6,847.14
5123	MEDICARE				2,286.00	938.44	.00	BEGINNING BALANCE	
09/13/13	19-5		091313			97.71		Pro091313	
	TOTAL MEDICARE				2,286.00	1,036.15	.00		1,249.85
5132	HEALTH INS				40,219.00	13,403.00	.00	BEGINNING BALANCE	
09/30/13	19-5		20141037			3,352.00		ER HEALTH INS EXPENSE	
	TOTAL HEALTH INS				40,219.00	16,755.00	.00		23,464.00

* THERE IS A NOTE ASSOCIATED WITH THIS TRANSACTION

SUNGARD PENTAMATION - FINANCE PLUS V 4.0
 DATE: 10/02/13
 TIME: 07:57:18

VILLAGE OF LAKE ZURICH
 EXPENDITURE AUDIT TRAIL

PAGE NUMBER: 2
 AUDIT21

SELECTION CRITERIA: orgn.fund="101" 1=1
 ACCOUNTING PERIOD: 5/14

SORTED BY: FUND,DEPARTMENT,PROGRAM,ACCOUNT

TOTALED ON: FUND,DEPARTMENT

PAGE BREAKS ON: FUND,DEPARTMENT

FUND - 101 -
 BUDGET CODE - 10136042 - PARK MAINTENANCE

ACCOUNT DATE	T/C	PO NUMBER	REFERENCE	VENDOR	BUDGET	EXPENDITURES	ENCUMBRANCES	DESCRIPTION	CUMULATIVE BALANCE
5133			LIFE INS		234.00	37.51		.00 BEGINNING BALANCE	
			TOTAL LIFE INS		234.00	37.51		.00	196.49
5151			LICENSING/CERTIFICATIONS		.00	.00		.00 BEGINNING BALANCE	
			TOTAL LICENSING/CERTIFICATIONS		.00	.00		.00	.00
5152			CONFERENCES & SEMINARS		.00	.00		.00 BEGINNING BALANCE	
			TOTAL CONFERENCES & SEMINARS		.00	.00		.00	.00
5153			TRAINING & BUSINESS MTGS		.00	.00		.00 BEGINNING BALANCE	
			TOTAL TRAINING & BUSINESS MTGS		.00	.00		.00	.00
5155			MEMBERSHIPS & SUBSCRIP		.00	.00		.00 BEGINNING BALANCE	
			TOTAL MEMBERSHIPS & SUBSCRIP		.00	.00		.00	.00
519917			JANITORIAL CONTRACT SVCS		.00	.00		.00 BEGINNING BALANCE	
			TOTAL JANITORIAL CONTRACT SVCS		.00	.00		.00	.00
519920			TREE TRIMMING		.00	.00		.00 BEGINNING BALANCE	
			TOTAL TREE TRIMMING		.00	.00		.00	.00
519921			TREE REMOVAL		.00	.00		.00 BEGINNING BALANCE	
			TOTAL TREE REMOVAL		.00	.00		.00	.00
519922			TREE PLANTING		.00	.00		.00 BEGINNING BALANCE	
			TOTAL TREE PLANTING		.00	.00		.00	.00
519932			MAINT-OFFICE EQUIP		.00	.00		.00 BEGINNING BALANCE	
			TOTAL MAINT-OFFICE EQUIP		.00	.00		.00	.00
519940			MAINT-PARKING LOTS & STR		.00	.00		.00 BEGINNING BALANCE	

* THERE IS A NOTE ASSOCIATED WITH THIS TRANSACTION

SUNGARD PENTAMATION - FINANCE PLUS V 4.0
 DATE: 10/02/13
 TIME: 07:57:18

VILLAGE OF LAKE ZURICH
 EXPENDITURE AUDIT TRAIL

PAGE NUMBER: 3
 AUDIT21

SELECTION CRITERIA: orgn.fund="101" 1=1
 ACCOUNTING PERIOD: 5/14

SORTED BY: FUND,DEPARTMENT,PROGRAM,ACCOUNT

TOTALED ON: FUND,DEPARTMENT

PAGE BREAKS ON: FUND,DEPARTMENT

FUND - 101 -
 BUDGET CODE - 10136042 - PARK MAINTENANCE

ACCOUNT	DATE	T/C	PO NUMBER	REFERENCE	VENDOR	BUDGET	EXPENDITURES	ENCUMBRANCES	DESCRIPTION	CUMULATIVE BALANCE
TOTAL MAINT-PARKING LOTS & STR						.00	.00	.00		.00
519967				EQUIPMENT RENTAL		.00	.00	.00	BEGINNING BALANCE	.00
TOTAL EQUIPMENT RENTAL						.00	.00	.00		.00
519976				MISCELLANEOUS		.00	.00	.00	BEGINNING BALANCE	.00
TOTAL MISCELLANEOUS						.00	.00	.00		.00
5219				OTHER PROFESSIONAL SVCS		.00	.00	.00	BEGINNING BALANCE	.00
TOTAL OTHER PROFESSIONAL SVCS						.00	.00	.00		.00
5261				MAINT-STREETS		.00	.00	.00	BEGINNING BALANCE	.00
TOTAL MAINT-STREETS						.00	.00	.00		.00
5264				CONTRACTED TREE MAINT		.00	.00	.00	BEGINNING BALANCE	.00
TOTAL CONTRACTED TREE MAINT						.00	.00	.00		.00
5265				MOSQUITO ABATEMENT		1,600.00	.00	.00	BEGINNING BALANCE	.00
TOTAL MOSQUITO ABATEMENT						1,600.00	.00	.00		1,600.00
5271				MAINT-BLDGS & GROUNDS		42,900.00	5,927.72	15,741.94	BEGINNING BALANCE	
09/04/13	17-5		14001379-01		82072 SUBURBAN ELEVATO			495.00	BARN ELEVATOR TESTING	
09/09/13	21-5		14000141-01	94909	4055 ANDERSON PEST SO		55.05	-55.05	PEST CONTROL - 675 OMG	
09/09/13	21-5		14000142-01	94909	4055 ANDERSON PEST SO		56.10	-56.10	PEST CONTROL - BARN	
09/09/13	21-5		14000148-01	95019	80040 SMITHEREEN PEST		47.00	-47.00	PEST CONTROL-505 TELSER	
09/09/13	21-5		14000400-02	94938	19700 DUSTCATCHERS INC		37.76	-37.76	RUGS - BARN	
09/09/13	21-5		14000400-03	94938	19700 DUSTCATCHERS INC		54.10	-54.10	RUGS - BF CRK	
09/09/13	21-5		14001379-01	95027	82072 SUBURBAN ELEVATO		495.00	-495.00	BARN ELEVATOR TESTING	
09/13/13	21-5		14000332-02	94895	9219 BEST QUALITY CLE		1,365.00	-1,365.00	PK - CLEANING SERVICE	
09/26/13	17-5		14001683-01		13598 CHANGING SEASONS			447.00	REPAIRS TO PARK BARN	
09/27/13	21-5		14000332-02	52929	9219 BEST QUALITY CLE		1,365.00	-1,365.00	PK - CLEANING SERVICE	
09/27/13	21-5		14000332-02	53394	9219 BEST QUALITY CLE		1,365.00	-1,365.00	PK - CLEANING SERVICE	
09/27/13	21-5		14001683-01	2114	13598 CHANGING SEASONS		447.00	-447.00	REPAIRS TO PARK BARN	
TOTAL MAINT-BLDGS & GROUNDS						42,900.00	11,214.73	11,396.93		20,288.34

* THERE IS A NOTE ASSOCIATED WITH THIS TRANSACTION

SUNGARD PENTAMATION - FINANCE PLUS V 4.0
 DATE: 10/02/13
 TIME: 07:57:18

VILLAGE OF LAKE ZURICH
 EXPENDITURE AUDIT TRAIL

PAGE NUMBER: 4
 AUDIT21

SELECTION CRITERIA: orgn.fund="101" 1=1
 ACCOUNTING PERIOD: 5/14

SORTED BY: FUND,DEPARTMENT,PROGRAM,ACCOUNT

TOTALED ON: FUND,DEPARTMENT

PAGE BREAKS ON: FUND,DEPARTMENT

FUND - 101 -
 BUDGET CODE - 10136042 - PARK MAINTENANCE

ACCOUNT DATE	T/C	PO NUMBER	REFERENCE	VENDOR	BUDGET	EXPENDITURES	ENCUMBRANCES	DESCRIPTION	CUMULATIVE BALANCE
5272		MAINT-LAWN & LANDSCAPING			100,000.00	19,991.69	51,403.54	BEGINNING BALANCE	
09/27/13	21-5	14001004-01 94310		77930 SEBERT LANDSCAPI		6,754.41	-6,754.41	LANDSCAPING CONTRACT	
		TOTAL MAINT-LAWN & LANDSCAPING			100,000.00	26,746.10	44,649.13		28,604.77
5274		MAINT-EQUIPMENT			.00	.00	.00	BEGINNING BALANCE	
		TOTAL MAINT-EQUIPMENT			.00	.00	.00		.00
529904		MAINT PARTS & SUPPLIES			.00	.00	.00	BEGINNING BALANCE	
		TOTAL MAINT PARTS & SUPPLIES			.00	.00	.00		.00
529907		BARRICADES & SAFETY EQUIP			.00	.00	.00	BEGINNING BALANCE	
		TOTAL BARRICADES & SAFETY EQUIP			.00	.00	.00		.00
529908		SIGNS POSTS & HARDWARE			.00	.00	.00	BEGINNING BALANCE	
		TOTAL SIGNS POSTS & HARDWARE			.00	.00	.00		.00
529909		PAINT & STAINS			.00	.00	.00	BEGINNING BALANCE	
		TOTAL PAINT & STAINS			.00	.00	.00		.00
529912		FERTILIZER & PESTICIDES			.00	.00	.00	BEGINNING BALANCE	
		TOTAL FERTILIZER & PESTICIDES			.00	.00	.00		.00
5311		ELECTRICITY			5,000.00	1,375.38	18.42	BEGINNING BALANCE	
09/09/13	21-5	14001333-01 94930		15271 COMMONWEALTH EDI		18.42	-18.42	WICKLOW SOCCER	
09/24/13	17-5	14001634-01		15271 COMMONWEALTH EDI			16.88	WICKLOW SOCCER	
09/24/13	17-5	14001634-02		15271 COMMONWEALTH EDI			379.25	PAULUS	
09/24/13	17-5	14001634-03		15271 COMMONWEALTH EDI			1.58	PAULUS	
09/27/13	21-5	14001634-01 1043045031		15271 COMMONWEALTH EDI		16.88	-16.88	WICKLOW SOCCER	
09/27/13	21-5	14001634-02 1383655008		15271 COMMONWEALTH EDI		379.25	-379.25	PAULUS	
09/27/13	21-5	14001634-03 0409104007		15271 COMMONWEALTH EDI		1.58	-1.58	PAULUS	
		TOTAL ELECTRICITY			5,000.00	1,791.51	.00		3,208.49

* THERE IS A NOTE ASSOCIATED WITH THIS TRANSACTION

SUNGARD PENTAMATION - FINANCE PLUS V 4.0
 DATE: 10/02/13
 TIME: 07:57:18

VILLAGE OF LAKE ZURICH
 EXPENDITURE AUDIT TRAIL

PAGE NUMBER: 5
 AUDIT21

SELECTION CRITERIA: orgn.fund="101" 1=1
 ACCOUNTING PERIOD: 5/14

SORTED BY: FUND, DEPARTMENT, PROGRAM, ACCOUNT

TOTALED ON: FUND, DEPARTMENT

PAGE BREAKS ON: FUND, DEPARTMENT

FUND - 101 -
 BUDGET CODE - 10136042 - PARK MAINTENANCE

ACCOUNT DATE	T/C	PO NUMBER	REFERENCE	VENDOR	BUDGET	EXPENDITURES	ENCUMBRANCES	DESCRIPTION	CUMULATIVE BALANCE
5312					8,000.00	815.95		2.00 BEGINNING BALANCE	
09/06/13	17-5	14001392-07		61214 NICOR GAS				51.67 KUECHMAN GAS	
09/06/13	17-5	14001392-08		61214 NICOR GAS				52.89 BARN GAS	
09/06/13	17-5	14001392-09		61214 NICOR GAS				79.26 PAULUS BATHROOM GAS	
09/06/13	17-5	14001411-02		61214 NICOR GAS				180.92 351 GAS	
09/06/13	17-5	14001411-03		61214 NICOR GAS				152.85 BUFFALO CREEK GAS	
09/09/13	21-5	14001392-07 94990		61214 NICOR GAS		25.45		-51.67 KUECHMAN GAS	
09/09/13	21-5	14001392-08 94990		61214 NICOR GAS		25.45		-52.89 BARN GAS	
09/09/13	21-5	14001392-09 94990		61214 NICOR GAS		39.00		-79.26 PAULUS BATHROOM GAS	
09/09/13	21-5	14001411-02 94990		61214 NICOR GAS		87.94		-180.92 351 GAS	
09/09/13	21-5	14001411-03 94990		61214 NICOR GAS		64.77		-152.85 BUFFALO CREEK GAS	
		TOTAL NATURAL GAS			8,000.00	1,058.56		2.00	6,939.44
5314					.00	.00		.00 BEGINNING BALANCE	
		TOTAL CELL PHONES & PAGERS			.00	.00		.00	.00
5322					6,600.00	2,332.57		.00 BEGINNING BALANCE	
09/26/13	17-5	14001684-02		7510 BADE PAPER PRODU				503.63 CUSTODIAL SUPPLIES PARKS	
09/27/13	21-5	14001684-02 190760-00		7510 BADE PAPER PRODU		503.63		-503.63 CUSTODIAL SUPPLIES PARKS	
		TOTAL CUSTODIAL SUPPLIES			6,600.00	2,836.20		.00	3,763.80
5323					27,400.00	3,105.55		61.66 BEGINNING BALANCE	
09/03/13	17-5	14001349-01		13160 CASPER TRUE VALU				7.90 WASP SPRAY	
09/03/13	18-5	14001349-01		13160 CASPER TRUE VALU				.08 CHANGE ORDER - 1	
09/03/13	17-5	14001357-01		37025 HOME DEPOT CREDI				95.04 WASP SPRAY	
09/06/13	17-5	14001436-01		45900 JCK CONTRACTORS,				130.00 BLACK DIRT	
09/09/13	21-5	14001096-03 94925		13160 CASPER TRUE VALU		17.94		-17.94 WASP SPRAY	
09/09/13	21-5	14001308-01 94925		13160 CASPER TRUE VALU		9.98		-9.98 WASP SPRAY	
09/09/13	21-5	14001308-02 94925		13160 CASPER TRUE VALU		9.98		-9.98 WASP SPRAY	
09/09/13	21-5	14001314-01 94963		37025 HOME DEPOT CREDI		23.76		-23.76 WASP SPRAY	
09/09/13	21-5	14001349-01 94925		13160 CASPER TRUE VALU		7.98		-7.98 WASP SPRAY	
09/09/13	21-5	14001357-01 94963		37025 HOME DEPOT CREDI		95.04		-95.04 WASP SPRAY	
09/09/13	21-5	14001436-01 94970		45900 JCK CONTRACTORS,		130.00		-130.00 BLACK DIRT	
09/12/13	17-5	14001490-02		15390 CONSERV FARM SUP				166.23 PARK LANDSCAPE SUPPLIES	
09/27/13	21-5	14001490-02 1764204-IN		15390 CONSERV FARM SUP		166.23		-166.23 PARK LANDSCAPE SUPPLIES	
		TOTAL LANDSCAPING SUPPLIES			27,400.00	3,566.46		.00	23,833.54

* THERE IS A NOTE ASSOCIATED WITH THIS TRANSACTION

SUNGARD PENTAMATION - FINANCE PLUS V 4.0
 DATE: 10/02/13
 TIME: 07:57:18

VILLAGE OF LAKE ZURICH
 EXPENDITURE AUDIT TRAIL

PAGE NUMBER: 6
 AUDIT21

SELECTION CRITERIA: orgn.fund="101" 1=1
 ACCOUNTING PERIOD: 5/14

SORTED BY: FUND,DEPARTMENT,PROGRAM,ACCOUNT

TOTALED ON: FUND,DEPARTMENT

PAGE BREAKS ON: FUND,DEPARTMENT

FUND - 101 -
 BUDGET CODE - 10136042 - PARK MAINTENANCE

ACCOUNT DATE	T/C	PO NUMBER	REFERENCE	VENDOR	BUDGET	EXPENDITURES	ENCUMBRANCES DESCRIPTION	CUMULATIVE BALANCE
5325		BLDG & GROUND MAINT SUPPL			12,500.00	2,337.57	116.48 BEGINNING BALANCE	
09/03/13	17-5	14001348-01		37025 HOME DEPOT CREDI			29.97 ELECTRICAL SUPPLIES	
09/03/13	17-5	14001350-01		37025 HOME DEPOT CREDI			34.85 PAINT	
09/03/13	17-5	14001351-01		13160 CASPER TRUE VALU			4.58 KEYS	
09/03/13	17-5	14001364-02		13160 CASPER TRUE VALU			12.99 PARK SIGN MAINT	
09/06/13	17-5	14001398-01		2140 PRECISION LOCK &			36.00 PARK KEYS	
09/09/13	21-5	14001077-01 94925		13160 CASPER TRUE VALU		17.99	-17.99 MAINT PARKS	
09/09/13	21-5	14001077-02 94925		13160 CASPER TRUE VALU		12.99	-12.99 MAINT VH	
09/09/13	21-5	14001224-04 94925		13160 CASPER TRUE VALU		10.99	-10.99 BREEZEWALD LIGHTING REPAI	
09/09/13	21-5	14001282-01 94925		13160 CASPER TRUE VALU		13.58	-13.58 BARN PLUMBING SUPPLIES	
09/09/13	21-5	14001308-03 94925		13160 CASPER TRUE VALU		10.99	-10.99 BUFFALO CREEK CLOCK	
09/09/13	21-5	14001311-01 94964		37025 HOME DEPOT CREDI		19.97	-19.97 PAINT/PLEX GLASS	
09/09/13	21-5	14001311-02 94964		37025 HOME DEPOT CREDI		29.97	-29.97 BALLAST - BARN	
09/09/13	21-5	14001348-01 94964		37025 HOME DEPOT CREDI		29.97	-29.97 ELECTRICAL SUPPLIES	
09/09/13	21-5	14001350-01 94964		37025 HOME DEPOT CREDI		34.85	-34.85 PAINT	
09/09/13	21-5	14001351-01 94925		13160 CASPER TRUE VALU		4.58	-4.58 KEYS	
09/09/13	21-5	14001364-02 94925		13160 CASPER TRUE VALU		12.99	-12.99 PARK SIGN MAINT	
09/09/13	21-5	14001398-01 94903		2140 PRECISION LOCK &		36.00	-36.00 PARK KEYS	
09/09/13	17-5	14001459-02		13160 CASPER TRUE VALU			3.79 MEMORIAL BENCH REPAIR	
09/19/13	17-5	14001560-01		37025 HOME DEPOT CREDI			73.50 PARK ELECTRIC SUPPLIES	
09/24/13	17-5	14001647-01		37025 HOME DEPOT CREDI			64.37 RUG - PAULUS	
09/24/13	17-5	14001647-02		37025 HOME DEPOT CREDI			13.98 GFCI	
09/26/13	17-5	14001668-03		13160 CASPER TRUE VALU			6.58 BULBS PARKS	
09/26/13	17-5	14001681-01		13160 CASPER TRUE VALU			2.79 KEYS PARKS	
09/27/13	21-5	14001560-01 4112983		37025 HOME DEPOT CREDI		73.50	-73.50 PARK ELECTRIC SUPPLIES	
09/27/13	21-5	14001647-01 3119513		37025 HOME DEPOT CREDI		64.37	-64.37 RUG - PAULUS	
09/27/13	21-5	14001647-02 3119513		37025 HOME DEPOT CREDI		13.98	-13.98 GFCI	
		TOTAL BLDG & GROUND MAINT SUPPL			12,500.00	2,724.29	13.16	9,762.55
5327		EQUIP MAINT PART&SUPPLIES			8,100.00	5,270.92	36.66 BEGINNING BALANCE	
09/09/13	21-5	14001311-01 94964		37025 HOME DEPOT CREDI		23.68	-23.68 PAINT/PLEX GLASS	
09/09/13	21-5	14001311-03 94964		37025 HOME DEPOT CREDI		12.98	-12.98 SPRAYGROUND PARTS	
09/24/13	17-5	14001599-01		96120 GRAINGER			34.96 SPRAYGROUND PARTS	
09/24/13	17-5	14001599-02		96120 GRAINGER			360.68 SPRAYGROUND PARTS	
09/27/13	21-5	14001599-01 9210497013		96120 GRAINGER		34.96	-34.96 SPRAYGROUND PARTS	
09/27/13	21-5	14001599-02 9188503925		96120 GRAINGER		360.68	-360.68 SPRAYGROUND PARTS	
09/27/13	17-5	14001692-02		37025 HOME DEPOT CREDI			3.67 DRILL BITS BUFFALO CREEK	
09/27/13	21-5	14001692-02 5037569		37025 HOME DEPOT CREDI		3.67	-3.67 DRILL BITS BUFFALO CREEK	
		TOTAL EQUIP MAINT PART&SUPPLIES			8,100.00	5,706.89	.00	2,393.11

* THERE IS A NOTE ASSOCIATED WITH THIS TRANSACTION

SUNGARD PENTAMATION - FINANCE PLUS V 4.0
 DATE: 10/02/13
 TIME: 07:57:18

VILLAGE OF LAKE ZURICH
 EXPENDITURE AUDIT TRAIL

PAGE NUMBER: 7
 AUDIT21

SELECTION CRITERIA: orgn.fund="101" 1=1
 ACCOUNTING PERIOD: 5/14

SORTED BY: FUND,DEPARTMENT,PROGRAM,ACCOUNT

TOTALED ON: FUND,DEPARTMENT

PAGE BREAKS ON: FUND,DEPARTMENT

FUND - 101 -
 BUDGET CODE - 10136042 - PARK MAINTENANCE

ACCOUNT DATE	T/C	PO NUMBER	REFERENCE	VENDOR	BUDGET	EXPENDITURES	ENCUMBRANCES	DESCRIPTION	CUMULATIVE BALANCE
5328					.00	.00	.00	BEGINNING BALANCE	.00
					.00	.00	.00		
5344					5,000.00	3,165.07	.00	BEGINNING BALANCE	1,834.93
					5,000.00	3,165.07	.00		
5353					.00	.00	.00	BEGINNING BALANCE	.00
					.00	.00	.00		
5354					1,800.00	806.73	17.98	BEGINNING BALANCE	
09/09/13 21-5		14001096-02	94925	13160 CASPER TRUE VALU		17.98	-17.98	RAKE	
					1,800.00	824.71	.00		975.29
5355					.00	.00	.00	BEGINNING BALANCE	.00
					.00	.00	.00		
5357					.00	.00	.00	BEGINNING BALANCE	.00
					.00	.00	.00		
5358					1,000.00	.00	.00	BEGINNING BALANCE	1,000.00
					1,000.00	.00	.00		
5359					3,000.00	197.30	10.26	BEGINNING BALANCE	
09/09/13 21-5		14001224-01	94925	13160 CASPER TRUE VALU		7.98	-7.98	SUPPLIES FOR MEMORIAL BEN	
09/09/13 21-5		14001224-02	94925	13160 CASPER TRUE VALU		2.28	-2.28	SUPPLIES FOR MEMORIAL BEN	
09/26/13 17-5		14001680-01		37025 HOME DEPOT CREDI			16.21	BENCH HARDWARE BUFFALO CR	
09/27/13 21-5		14001680-01	6037448	37025 HOME DEPOT CREDI		16.21	-16.21	BENCH HARDWARE BUFFALO CR	
					3,000.00	223.77	.00		2,776.23
539901					.00	.00	.00	BEGINNING BALANCE	.00
					.00	.00	.00		

* THERE IS A NOTE ASSOCIATED WITH THIS TRANSACTION

SUNGARD PENTAMATION - FINANCE PLUS V 4.0
 DATE: 10/02/13
 TIME: 07:57:18

VILLAGE OF LAKE ZURICH
 EXPENDITURE AUDIT TRAIL

PAGE NUMBER: 8
 AUDIT21

SELECTION CRITERIA: orgn.fund="101" 1=1
 ACCOUNTING PERIOD: 5/14

SORTED BY: FUND, DEPARTMENT, PROGRAM, ACCOUNT

TOTALED ON: FUND, DEPARTMENT

PAGE BREAKS ON: FUND, DEPARTMENT

FUND - 101 -
 BUDGET CODE - 10136042 - PARK MAINTENANCE

ACCOUNT DATE	T/C	PO NUMBER	REFERENCE	VENDOR	BUDGET	EXPENDITURES	ENCUMBRANCES	DESCRIPTION	CUMULATIVE BALANCE
5414					2,100.00	469.00	4,516.62	BEGINNING BALANCE	
09/09/13	21-5	14001072-01	94931	15278 COMMUNITY SEWER		67.00	-67.00	RENTALS - PAULUS PK	
				TOTAL RENTALS	2,100.00	536.00	4,449.62		-2,885.62
5520					.00	.00	.00	BEGINNING BALANCE	
				TOTAL LAND IMPROVEMENTS	.00	.00	.00		.00
5530					.00	.00	.00	BEGINNING BALANCE	
				TOTAL BLDG & BLDG IMPROVEMENTS	.00	.00	.00		.00
5550					.00	.00	.00	BEGINNING BALANCE	
				TOTAL MACHINERY & EQUIPMENT	.00	.00	.00		.00
5560					30,100.00	10,093.11	11,538.34	BEGINNING BALANCE	
				TOTAL VEHICLES	30,100.00	10,093.11	11,538.34		8,468.55
5701					.00	.00	.00	BEGINNING BALANCE	
				TOTAL VEHICLE MAINT INTERSVC	.00	.00	.00		.00
				TOTAL DEPARTMENT - P/W-GEN SVCS	513,989.00	173,648.79	72,049.18		268,291.03

* THERE IS A NOTE ASSOCIATED WITH THIS TRANSACTION

SUNGARD PENTAMATION - FINANCE PLUS V 4.0
 DATE: 10/02/13
 TIME: 07:57:18

VILLAGE OF LAKE ZURICH
 EXPENDITURE AUDIT TRAIL

PAGE NUMBER: 9
 AUDIT21

SELECTION CRITERIA: orgn.fund="101" 1=1
 ACCOUNTING PERIOD: 5/14

SORTED BY: FUND,DEPARTMENT,PROGRAM,ACCOUNT

TOTALED ON: FUND,DEPARTMENT

PAGE BREAKS ON: FUND,DEPARTMENT

FUND - 101 -
 BUDGET CODE - 10167001 - PARK & REC ADMIN

ACCOUNT	DATE	T/C	PO NUMBER	REFERENCE	VENDOR	BUDGET	EXPENDITURES	ENCUMBRANCES	DESCRIPTION	CUMULATIVE BALANCE
101-67-001-10167001 - PARK & REC ADMIN										
5110						140,445.00	53,115.04	.00	BEGINNING BALANCE	
	09/13/13			091313			5,451.49		Pro091313	
				TOTAL FULL TIME		140,445.00	58,566.53	.00		81,878.47
5111						34,070.00	10,937.81	.00	BEGINNING BALANCE	
	09/13/13			091313			1,172.50		Pro091313	
				TOTAL PART TIME		34,070.00	12,110.31	.00		21,959.69
5113						.00	24.74	.00	BEGINNING BALANCE	
				TOTAL OVERTIME		.00	24.74	.00		-24.74
5121						19,448.00	7,285.47	.00	BEGINNING BALANCE	
	09/13/13			091313			747.40		Pro091313	
				TOTAL IMRF		19,448.00	8,032.87	.00		11,415.13
5122						10,819.00	3,856.42	.00	BEGINNING BALANCE	
	09/13/13			091313			396.61		Pro091313	
				TOTAL SOCIAL SECURITY		10,819.00	4,253.03	.00		6,565.97
5123						2,531.00	901.86	.00	BEGINNING BALANCE	
	09/13/13			091313			92.75		Pro091313	
				TOTAL MEDICARE		2,531.00	994.61	.00		1,536.39
5132						26,060.00	8,684.00	.00	BEGINNING BALANCE	
	09/30/13			20141037			2,172.00		ER HEALTH INS EXPENSE	
				TOTAL HEALTH INS		26,060.00	10,856.00	.00		15,204.00
5133						180.00	28.85	.00	BEGINNING BALANCE	
				TOTAL LIFE INS		180.00	28.85	.00		151.15

* THERE IS A NOTE ASSOCIATED WITH THIS TRANSACTION

SUNGARD PENTAMATION - FINANCE PLUS V 4.0
 DATE: 10/02/13
 TIME: 07:57:18

VILLAGE OF LAKE ZURICH
 EXPENDITURE AUDIT TRAIL

PAGE NUMBER: 10
 AUDIT21

SELECTION CRITERIA: orgn.fund="101" 1=1
 ACCOUNTING PERIOD: 5/14

SORTED BY: FUND,DEPARTMENT,PROGRAM,ACCOUNT

TOTALED ON: FUND,DEPARTMENT

PAGE BREAKS ON: FUND,DEPARTMENT

FUND - 101 -
 BUDGET CODE - 10167001 - PARK & REC ADMIN

ACCOUNT DATE	T/C	PO NUMBER	REFERENCE	VENDOR	BUDGET	EXPENDITURES	ENCUMBRANCES	DESCRIPTION	CUMULATIVE BALANCE
5139					.00	.00	.00	BEGINNING BALANCE	
					.00	.00	.00		.00
5152					400.00	.00	.00	BEGINNING BALANCE	
					400.00	.00	.00		400.00
5153					100.00	.00	.00	BEGINNING BALANCE	
					100.00	.00	.00		100.00
5155					939.00	753.50	.00	BEGINNING BALANCE	
					939.00	753.50	.00		185.50
5156					.00	.00	.00	BEGINNING BALANCE	
					.00	.00	.00		.00
5157					400.00	97.75	.00	BEGINNING BALANCE	
					400.00	97.75	.00		302.25
519932					.00	.00	.00	BEGINNING BALANCE	
					.00	.00	.00		.00
519951					.00	.00	.00	BEGINNING BALANCE	
					.00	.00	.00		.00
5219					.00	3,136.00	.00	BEGINNING BALANCE	
					.00	3,136.00	.00		-3,136.00
5274					1,100.00	.00	.00	BEGINNING BALANCE	
					1,100.00	.00	.00		1,100.00
5275					4,600.00	4,542.00	.00	BEGINNING BALANCE	

* THERE IS A NOTE ASSOCIATED WITH THIS TRANSACTION

SUNGARD PENTAMATION - FINANCE PLUS V 4.0
 DATE: 10/02/13
 TIME: 07:57:18

VILLAGE OF LAKE ZURICH
 EXPENDITURE AUDIT TRAIL

PAGE NUMBER: 11
 AUDIT21

SELECTION CRITERIA: orgn.fund="101" 1=1
 ACCOUNTING PERIOD: 5/14

SORTED BY: FUND, DEPARTMENT, PROGRAM, ACCOUNT

TOTALED ON: FUND, DEPARTMENT

PAGE BREAKS ON: FUND, DEPARTMENT

FUND - 101 -
 BUDGET CODE - 10167001 - PARK & REC ADMIN

ACCOUNT	DATE	T/C	PO NUMBER	REFERENCE	VENDOR	BUDGET	EXPENDITURES	ENCUMBRANCES	DESCRIPTION	CUMULATIVE BALANCE
TOTAL MAINT - SOFTWARE						4,600.00	4,542.00	.00		58.00
529903	DONATION IMPROVEMENTS					.00	.00	.00	BEGINNING BALANCE	
TOTAL DONATION IMPROVEMENTS						.00	.00	.00		.00
5313	TELEPHONE					.00	.00	.00	BEGINNING BALANCE	
TOTAL TELEPHONE						.00	.00	.00		.00
5314	CELL PHONES & PAGERS					1,500.00	151.77	.00	BEGINNING BALANCE	
09/06/13	17-5	14001412-01			90050 VERIZON WIRELESS			33.91	CELL PHONES	
09/09/13	21-5	14001412-01	95038		90050 VERIZON WIRELESS		33.91	-33.91	CELL PHONES	
09/27/13	17-5	14001691-01			90050 VERIZON WIRELESS			33.91	CELL PHONES	
09/27/13	21-5	14001691-01	9711757721		90050 VERIZON WIRELESS		33.91	-33.91	CELL PHONES	
TOTAL CELL PHONES & PAGERS						1,500.00	219.59	.00		1,280.41
5351	POSTAGE & SHIPPING					4,000.00	12.37	.00	BEGINNING BALANCE	
TOTAL POSTAGE & SHIPPING						4,000.00	12.37	.00		3,987.63
5352	PRINTING-STATIONERY/FORMS					14,200.00	4,210.25	.00	BEGINNING BALANCE	
TOTAL PRINTING-STATIONERY/FORMS						14,200.00	4,210.25	.00		9,989.75
5353	OFFICE SUPPLIES					3,500.00	344.70	251.96	BEGINNING BALANCE	
09/24/13	17-5	14001648-01			76143 RUNCO OFFICE SUP			22.23	OFFICE SUPPLIES	
09/27/13	21-5	14001648-01	554323-0		76143 RUNCO OFFICE SUP		22.23	-22.23	OFFICE SUPPLIES	
TOTAL OFFICE SUPPLIES						3,500.00	366.93	251.96		2,881.11
5355	UNIFORMS					.00	.00	.00	BEGINNING BALANCE	
TOTAL UNIFORMS						.00	.00	.00		.00
5357	MEDICAL SUPPLIES					500.00	.00	.00	BEGINNING BALANCE	
09/25/13	17-5	14001663-01			98490 ZEE MEDICAL SERV			28.20	FIRST AID SUPPLIES-BARN	
09/27/13	21-5	14001663-01	0100787748		98490 ZEE MEDICAL SERV		28.20	-28.20	FIRST AID SUPPLIES-BARN	
TOTAL MEDICAL SUPPLIES						500.00	28.20	.00		471.80

* THERE IS A NOTE ASSOCIATED WITH THIS TRANSACTION

SUNGARD PENTAMATION - FINANCE PLUS V 4.0
 DATE: 10/02/13
 TIME: 07:57:18

VILLAGE OF LAKE ZURICH
 EXPENDITURE AUDIT TRAIL

PAGE NUMBER: 12
 AUDIT21

SELECTION CRITERIA: orgn.fund="101" 1=1
 ACCOUNTING PERIOD: 5/14

SORTED BY: FUND,DEPARTMENT,PROGRAM,ACCOUNT

TOTALED ON: FUND,DEPARTMENT

PAGE BREAKS ON: FUND,DEPARTMENT

FUND - 101 -
 BUDGET CODE - 10167001 - PARK & REC ADMIN

ACCOUNT DATE	T/C	PO NUMBER	REFERENCE	VENDOR	BUDGET	EXPENDITURES	ENCUMBRANCES	DESCRIPTION	CUMULATIVE BALANCE
5361		PROGRAM SUPPLIES			2,250.00	.00		603.47 BEGINNING BALANCE	
09/09/13	21-5	14001300-01	94913	8040 BARCO PRODUCTS		603.47		-603.47 MEMORIAL BENCH-PAULUS PAR	
09/18/13	17-5	14001545-01		16212 CROWN TROPHY				22.25 ENGRAVING	
09/18/13	17-5	14001552-01		16212 CROWN TROPHY				8.50 LEAF ENGRAVING	
09/27/13	21-5	14001545-01	IV624797	16212 CROWN TROPHY		22.25		-22.25 ENGRAVING	
09/27/13	21-5	14001552-01	IV624645	16212 CROWN TROPHY		8.50		-8.50 LEAF ENGRAVING	
		TOTAL PROGRAM SUPPLIES			2,250.00	634.22		.00	1,615.78
539901		OTHER IMP			.00	.00		.00 BEGINNING BALANCE	
		TOTAL OTHER IMP			.00	.00		.00	.00
5411		LEGAL NOTICE/PUBLISHING			.00	.00		.00 BEGINNING BALANCE	
		TOTAL LEGAL NOTICE/PUBLISHING			.00	.00		.00	.00
5412		BANK & CREDIT CARD FEES			11,000.00	3,544.55		.00 BEGINNING BALANCE	
09/18/13	17-5	14001542-01		12521 INLAND BANK				30.00 AUG 2013	
09/23/13	18-5	14001542-01		12521 INLAND BANK				.00 CHANGE ORDER - 2	
09/23/13	18-5	14001542-01		12521 INLAND BANK				.00 CHANGE ORDER - 1	
09/26/13	20-5	14001542-01	WT000132	12521 INLAND BANK		30.00		-30.00 AUG 2013	
09/30/13	19-5		20141255			975.78		RECREATION BANK FEES SEP	
		TOTAL BANK & CREDIT CARD FEES			11,000.00	4,550.33		.00	6,449.67
5414		RENTALS			.00	.00		.00 BEGINNING BALANCE	
		TOTAL RENTALS			.00	.00		.00	.00
5550		MACHINERY & EQUIPMENT			.00	.00		.00 BEGINNING BALANCE	
		TOTAL MACHINERY & EQUIPMENT			.00	.00		.00	.00
5560		VEHICLES			.00	.00		.00 BEGINNING BALANCE	
		TOTAL VEHICLES			.00	.00		.00	.00
5570		CAPITAL LEASE			.00	.00		.00 BEGINNING BALANCE	

* THERE IS A NOTE ASSOCIATED WITH THIS TRANSACTION

SUNGARD PENTAMATION - FINANCE PLUS V 4.0
 DATE: 10/02/13
 TIME: 07:57:18

VILLAGE OF LAKE ZURICH
 EXPENDITURE AUDIT TRAIL

PAGE NUMBER: 13
 AUDIT21

SELECTION CRITERIA: orgn.fund="101" 1=1
 ACCOUNTING PERIOD: 5/14

SORTED BY: FUND,DEPARTMENT,PROGRAM,ACCOUNT

TOTALED ON: FUND,DEPARTMENT

PAGE BREAKS ON: FUND,DEPARTMENT

FUND - 101 -
 BUDGET CODE - 10167001 - PARK & REC ADMIN

ACCOUNT DATE	T/C	PO NUMBER	REFERENCE	VENDOR	BUDGET	EXPENDITURES	ENCUMBRANCES	DESCRIPTION	CUMULATIVE BALANCE
TOTAL CAPITAL LEASE					.00	.00	.00		.00
5701		VEHICLE MAINT INTERSVC			.00	.00	.00	BEGINNING BALANCE	.00
TOTAL VEHICLE MAINT INTERSVC					.00	.00	.00		.00
5702		LIABILITY INS INTERSVC			25,500.00	8,500.00	.00	BEGINNING BALANCE	
09/30/13	19-5		20140936			2,125.00		RISK MGMT 1/12 ANNL BUDGT	
TOTAL LIABILITY INS INTERSVC					25,500.00	10,625.00	.00		14,875.00
101-67-042-10167042 - PARK MAINT									
5110		FULL TIME			.00	.00	.00	BEGINNING BALANCE	
TOTAL FULL TIME					.00	.00	.00		.00
5111		PART TIME			.00	.00	.00	BEGINNING BALANCE	
TOTAL PART TIME					.00	.00	.00		.00
5113		OVERTIME			.00	.00	.00	BEGINNING BALANCE	
TOTAL OVERTIME					.00	.00	.00		.00
5121		IMRF			.00	.00	.00	BEGINNING BALANCE	
TOTAL IMRF					.00	.00	.00		.00
5122		SOCIAL SECURITY			.00	.00	.00	BEGINNING BALANCE	
TOTAL SOCIAL SECURITY					.00	.00	.00		.00
5123		MEDICARE			.00	.00	.00	BEGINNING BALANCE	
TOTAL MEDICARE					.00	.00	.00		.00
5132		HEALTH INS			.00	.00	.00	BEGINNING BALANCE	
TOTAL HEALTH INS					.00	.00	.00		.00

* THERE IS A NOTE ASSOCIATED WITH THIS TRANSACTION

SUNGARD PENTAMATION - FINANCE PLUS V 4.0
 DATE: 10/02/13
 TIME: 07:57:18

VILLAGE OF LAKE ZURICH
 EXPENDITURE AUDIT TRAIL

PAGE NUMBER: 17
 AUDIT21

SELECTION CRITERIA: orgn.fund="101" 1=1
 ACCOUNTING PERIOD: 5/14

SORTED BY: FUND,DEPARTMENT,PROGRAM,ACCOUNT

TOTALED ON: FUND,DEPARTMENT

PAGE BREAKS ON: FUND,DEPARTMENT

FUND - 101 -
 BUDGET CODE - 10167042 - PARK MAINT

ACCOUNT DATE	T/C	PO NUMBER	REFERENCE	VENDOR	BUDGET	EXPENDITURES	ENCUMBRANCES	DESCRIPTION	CUMULATIVE BALANCE
5520					.00	.00	.00	BEGINNING BALANCE	
					.00	.00	.00		.00
5560					.00	.00	.00	BEGINNING BALANCE	
					.00	.00	.00		.00
5701					.00	.00	.00	BEGINNING BALANCE	
					.00	.00	.00		.00
101-67-920-10167920 - SPECIAL RECREATION									
5242					287,464.00	105,534.00	.00	BEGINNING BALANCE	
					287,464.00	105,534.00	.00		181,930.00
101-67-935-10167935 - DANCE									
5111					30,800.00	1,600.27	.00	BEGINNING BALANCE	
			091313			1,056.82		Pro091313	
					30,800.00	2,657.09	.00		28,142.91
5121					.00	78.55	.00	BEGINNING BALANCE	
					.00	78.55	.00		-78.55
5122					1,910.00	99.21	.00	BEGINNING BALANCE	
			091313			65.53		Pro091313	
					1,910.00	164.74	.00		1,745.26
5123					446.00	23.20	.00	BEGINNING BALANCE	
			091313			15.33		Pro091313	
					446.00	38.53	.00		407.47

* THERE IS A NOTE ASSOCIATED WITH THIS TRANSACTION

SUNGARD PENTAMATION - FINANCE PLUS V 4.0
 DATE: 10/02/13
 TIME: 07:57:18

VILLAGE OF LAKE ZURICH
 EXPENDITURE AUDIT TRAIL

PAGE NUMBER: 18
 AUDIT21

SELECTION CRITERIA: orgn.fund="101" 1=1
 ACCOUNTING PERIOD: 5/14

SORTED BY: FUND,DEPARTMENT,PROGRAM,ACCOUNT

TOTALED ON: FUND,DEPARTMENT

PAGE BREAKS ON: FUND,DEPARTMENT

FUND - 101 -
 BUDGET CODE - 10167935 - DANCE

ACCOUNT DATE	T/C	PO NUMBER	REFERENCE	VENDOR	BUDGET	EXPENDITURES	ENCUMBRANCES	DESCRIPTION	CUMULATIVE BALANCE
519977		BUILDING RENTAL			.00	.00	.00	BEGINNING BALANCE	
		TOTAL BUILDING RENTAL			.00	.00	.00		.00
5241		PROGRAM SVCS			2,000.00	.00	.00	BEGINNING BALANCE	
		TOTAL PROGRAM SVCS			2,000.00	.00	.00		2,000.00
5359		OTHER SUPPLIES			23,000.00	342.41	.00	BEGINNING BALANCE	
		TOTAL OTHER SUPPLIES			23,000.00	342.41	.00		22,657.59
5361		PROGRAM SUPPLIES			500.00	499.90	.00	BEGINNING BALANCE	
		TOTAL PROGRAM SUPPLIES			500.00	499.90	.00		.10
539901		OTHER IMP			.00	.00	.00	BEGINNING BALANCE	
		TOTAL OTHER IMP			.00	.00	.00		.00
5414		RENTALS			7,000.00	6,962.50	.00	BEGINNING BALANCE	
		TOTAL RENTALS			7,000.00	6,962.50	.00		37.50
101-67-940-10167940 - PRESCHOOL									
5111		PART TIME			114,000.00	11,374.05	.00	BEGINNING BALANCE	
		09/13/13 19-5	091313			3,487.58		Pro091313	
		TOTAL PART TIME			114,000.00	14,861.63	.00		99,138.37
5121		IMRF			.00	.00	.00	BEGINNING BALANCE	
		TOTAL IMRF			.00	.00	.00		.00
5122		SOCIAL SECURITY			7,068.00	705.22	.00	BEGINNING BALANCE	
		09/13/13 19-5	091313			216.24		Pro091313	
		TOTAL SOCIAL SECURITY			7,068.00	921.46	.00		6,146.54
5123		MEDICARE			1,653.00	164.94	.00	BEGINNING BALANCE	

* THERE IS A NOTE ASSOCIATED WITH THIS TRANSACTION

SUNGARD PENTAMATION - FINANCE PLUS V 4.0
 DATE: 10/02/13
 TIME: 07:57:18

VILLAGE OF LAKE ZURICH
 EXPENDITURE AUDIT TRAIL

PAGE NUMBER: 19
 AUDIT21

SELECTION CRITERIA: orgn.fund="101" 1-1
 ACCOUNTING PERIOD: 5/14

SORTED BY: FUND,DEPARTMENT,PROGRAM,ACCOUNT

TOTALED ON: FUND,DEPARTMENT

PAGE BREAKS ON: FUND,DEPARTMENT

FUND - 101 -
 BUDGET CODE - 10167940 - PRESCHOOL

ACCOUNT DATE	T/C	PO NUMBER	REFERENCE	VENDOR	BUDGET	EXPENDITURES	ENCUMBRANCES	DESCRIPTION	CUMULATIVE BALANCE
09/13/13 19-5			091313			50.58		Pro091313	
TOTAL MEDICARE					1,653.00	215.52	.00		1,437.48
519977 BUILDING RENTAL					.00	.00	.00	BEGINNING BALANCE	
TOTAL BUILDING RENTAL					.00	.00	.00		.00
5241 PROGRAM SVCS					3,800.00	1,017.75	.00	BEGINNING BALANCE	
09/27/13 17-5 14001693-01				59175 MUSIC IN THE BOX			441.00	MUSIC MASTERS	
09/27/13 21-5 14001693-01 668				59175 MUSIC IN THE BOX		441.00	-441.00	MUSIC MASTERS	
TOTAL PROGRAM SVCS					3,800.00	1,458.75	.00		2,341.25
5355 UNIFORMS					.00	.00	.00	BEGINNING BALANCE	
TOTAL UNIFORMS					.00	.00	.00		.00
5361 PROGRAM SUPPLIES					5,300.00	7.89	.00	BEGINNING BALANCE	
TOTAL PROGRAM SUPPLIES					5,300.00	7.89	.00		5,292.11
5414 RENTALS					3,400.00	.00	.00	BEGINNING BALANCE	
09/16/13 17-5 14001529-01				76921 ST PETER'S CHURC			2,520.00	TERRIFIC 2'S - FACILITY R	
09/25/13 21-5 14001529-01 95054				76921 ST PETER'S CHURC		280.00	-280.00	TERRIFIC 2'S - FACILITY R	
09/27/13 21-5 14001529-01 OCT 2013				76921 ST PETER'S CHURC		280.00	-280.00	TERRIFIC 2'S -RENTAL	
TOTAL RENTALS					3,400.00	560.00	1,960.00		880.00
5550 MACHINERY & EQUIPMENT					.00	.00	.00	BEGINNING BALANCE	
TOTAL MACHINERY & EQUIPMENT					.00	.00	.00		.00
101-67-945-10167945 - YOUTH PROGRAMS									
5111 PART TIME					.00	.00	.00	BEGINNING BALANCE	
TOTAL PART TIME					.00	.00	.00		.00
5122 SOCIAL SECURITY					.00	.00	.00	BEGINNING BALANCE	
TOTAL SOCIAL SECURITY					.00	.00	.00		.00

* THERE IS A NOTE ASSOCIATED WITH THIS TRANSACTION

SUNGARD PENTAMATION - FINANCE PLUS V 4.0
 DATE: 10/02/13
 TIME: 07:57:18

VILLAGE OF LAKE ZURICH
 EXPENDITURE AUDIT TRAIL

PAGE NUMBER: 20
 AUDIT21

SELECTION CRITERIA: orgn.fund="101" 1=1
 ACCOUNTING PERIOD: 5/14

SORTED BY: FUND,DEPARTMENT,PROGRAM,ACCOUNT

TOTALED ON: FUND,DEPARTMENT

PAGE BREAKS ON: FUND,DEPARTMENT

FUND - 101 -
 BUDGET CODE - 10167945 - YOUTH PROGRAMS

ACCOUNT DATE	T/C	PO NUMBER	REFERENCE	VENDOR	BUDGET	EXPENDITURES	ENCUMBRANCES	DESCRIPTION	CUMULATIVE BALANCE
5123	MEDICARE				.00	.00	.00	BEGINNING BALANCE	
	TOTAL MEDICARE				.00	.00	.00		.00
5241	PROGRAM SVCS				1,350.00	165.00	.00	BEGINNING BALANCE	
09/12/13	17-5	14001511-01		70800 BARNETT, JENA			240.00	ART CLASSES	
09/27/13	21-5	14001511-01	560496	70800 BARNETT, JENA		240.00	-240.00	ART CLASSES	
	TOTAL PROGRAM SVCS				1,350.00	405.00	.00		945.00
5361	PROGRAM SUPPLIES				.00	.00	.00	BEGINNING BALANCE	
	TOTAL PROGRAM SUPPLIES				.00	.00	.00		.00
5550	MACHINERY & EQUIPMENT				.00	.00	.00	BEGINNING BALANCE	
	TOTAL MACHINERY & EQUIPMENT				.00	.00	.00		.00
101-67-960-10167960 - CAMPS									
5112	SEASONAL				74,000.00	61,462.11	.00	BEGINNING BALANCE	
	TOTAL SEASONAL				74,000.00	61,462.11	.00		12,537.89
5113	OVERTIME				.00	.00	.00	BEGINNING BALANCE	
	TOTAL OVERTIME				.00	.00	.00		.00
5122	SOCIAL SECURITY				4,588.00	3,810.77	.00	BEGINNING BALANCE	
	TOTAL SOCIAL SECURITY				4,588.00	3,810.77	.00		777.23
5123	MEDICARE				1,074.00	891.25	.00	BEGINNING BALANCE	
	TOTAL MEDICARE				1,074.00	891.25	.00		182.75
5241	PROGRAM SVCS				13,000.00	4,335.06	.00	BEGINNING BALANCE	
09/18/13	17-5	14001542-01		12521 INLAND BANK			1,149.98	AUG 2013	

* THERE IS A NOTE ASSOCIATED WITH THIS TRANSACTION

SUNGARD PENTAMATION - FINANCE PLUS V 4.0
 DATE: 10/02/13
 TIME: 07:57:18

VILLAGE OF LAKE ZURICH
 EXPENDITURE AUDIT TRAIL

PAGE NUMBER: 21
 AUDIT21

SELECTION CRITERIA: orgn.fund="101" 1=1
 ACCOUNTING PERIOD: 5/14

SORTED BY: FUND,DEPARTMENT,PROGRAM,ACCOUNT

TOTALED ON: FUND,DEPARTMENT

PAGE BREAKS ON: FUND,DEPARTMENT

FUND - 101 -
 BUDGET CODE - 10167960 - CAMPS

ACCOUNT	DATE	T/C	PO NUMBER	REFERENCE	VENDOR	BUDGET	EXPENDITURES	ENCUMBRANCES	DESCRIPTION	CUMULATIVE BALANCE
	09/23/13	18-5	14001542-01		12521 INLAND BANK				.00 CHANGE ORDER - 1	
	09/23/13	18-5	14001542-01		12521 INLAND BANK				.00 CHANGE ORDER - 2	
	09/26/13	20-5	14001542-01	WT000132	12521 INLAND BANK		1,149.98	-1,149.98	AUG 2013	
	TOTAL PROGRAM SVCS					13,000.00	5,485.04		.00	7,514.96
5361	PROGRAM SUPPLIES					5,500.00	2,405.88		.00 BEGINNING BALANCE	
	09/18/13	17-5	14001542-01		12521 INLAND BANK			1,352.73	AUG 2013	
	09/23/13	18-5	14001542-01		12521 INLAND BANK				.00 CHANGE ORDER - 1	
	09/23/13	18-5	14001542-01		12521 INLAND BANK				.00 CHANGE ORDER - 2	
	09/26/13	20-5	14001542-01	WT000132	12521 INLAND BANK		1,352.73	-1,352.73	AUG 2013	
	09/26/13	17-5	14001686-03		70250 PETTY CASH - FIN			90.95	CAMP SUPPLIES	
	09/27/13	21-5	14001686-03	SEPT 2013	70250 PETTY CASH - FIN		90.95	-90.95	CAMP SUPPLIES	
	TOTAL PROGRAM SUPPLIES					5,500.00	3,849.56		.00	1,650.44
101-67-965-10167965 - ATHLETICS										
5111	PART TIME					.00	.00		.00 BEGINNING BALANCE	
	TOTAL PART TIME					.00	.00		.00	.00
5113	OVERTIME					.00	.00		.00 BEGINNING BALANCE	
	TOTAL OVERTIME					.00	.00		.00	.00
5122	SOCIAL SECURITY					.00	.00		.00 BEGINNING BALANCE	
	TOTAL SOCIAL SECURITY					.00	.00		.00	.00
5123	MEDICARE					.00	.00		.00 BEGINNING BALANCE	
	TOTAL MEDICARE					.00	.00		.00	.00
519970	PROGRAM EQUIPMENT					.00	.00		.00 BEGINNING BALANCE	
	TOTAL PROGRAM EQUIPMENT					.00	.00		.00	.00
5241	PROGRAM SVCS					44,705.00	24,112.86		.00 BEGINNING BALANCE	
	09/06/13	17-5	14001395-01		31940 DEACON CALLISH I			528.00	SUMMER GOLF LESSONS	

* THERE IS A NOTE ASSOCIATED WITH THIS TRANSACTION

SUNGARD PENTAMATION - FINANCE PLUS V 4.0
 DATE: 10/02/13
 TIME: 07:57:18

VILLAGE OF LAKE ZURICH
 EXPENDITURE AUDIT TRAIL

PAGE NUMBER: 22
 AUDIT21

SELECTION CRITERIA: orgn.fund="101" 1=1
 ACCOUNTING PERIOD: 5/14

SORTED BY: FUND,DEPARTMENT,PROGRAM,ACCOUNT

TOTALED ON: FUND,DEPARTMENT

PAGE BREAKS ON: FUND,DEPARTMENT

FUND - 101 -
 BUDGET CODE - 10167965 - ATHLETICS

ACCOUNT	DATE	T/C	PO NUMBER	REFERENCE	VENDOR	BUDGET	EXPENDITURES	ENCUMBRANCES	DESCRIPTION	CUMULATIVE BALANCE
	09/09/13	21-5	14001395-01	94958	31940 DEACON CALLISH I		528.00		-528.00 SUMMER GOLF LESSONS	
	09/26/13	17-5	14001677-01		79745 SKYHAWKS SPORTS				1,391.25 TEE BALL FOR 5-6 YR OLDS-	
	09/27/13	21-5	14001677-01	294326716	79745 SKYHAWKS SPORTS		1,391.25		-1,391.25 TEE BALL FOR 5-6 YR OLDS-	
			TOTAL PROGRAM SVCS			44,705.00	26,032.11		.00	18,672.89
5360			PROGRAM SUPPLIES			.00	.00	.00	BEGINNING BALANCE	.00
			TOTAL PROGRAM SUPPLIES			.00	.00	.00		.00
5361			PROGRAM SUPPLIES			.00	.00	.00	BEGINNING BALANCE	.00
			TOTAL PROGRAM SUPPLIES			.00	.00	.00		.00
101-67-970-10167970 - AQUATICS										
509902			PARK MANAGER			.00	.00	.00	BEGINNING BALANCE	.00
			TOTAL PARK MANAGER			.00	.00	.00		.00
509903			LIFE GUARD			.00	.00	.00	BEGINNING BALANCE	.00
			TOTAL LIFE GUARD			.00	.00	.00		.00
509905			GATE GUARD			.00	.00	.00	BEGINNING BALANCE	.00
			TOTAL GATE GUARD			.00	.00	.00		.00
5112			SEASONAL			53,100.00	39,243.70	.00	BEGINNING BALANCE	
	09/13/13	19-5		091313			343.60		Pro091313	
			TOTAL SEASONAL			53,100.00	39,587.30	.00		13,512.70
5113			OVERTIME			.00	.00	.00	BEGINNING BALANCE	
	09/13/13	19-5		091313			1,361.37		Pro091313	
			TOTAL OVERTIME			.00	1,361.37	.00		-1,361.37
5122			SOCIAL SECURITY			3,292.00	2,457.81	.00	BEGINNING BALANCE	
	09/13/13	19-5		091313			105.71		Pro091313	
			TOTAL SOCIAL SECURITY			3,292.00	2,563.52	.00		728.48

* THERE IS A NOTE ASSOCIATED WITH THIS TRANSACTION

PAGE NUMBER: 23
AUDIT21

FUND - 101 -
BUDGET CODE - 10167970 - AQUATICS

* THERE IS A NOTE ASSOCIATED WITH THIS TRANSACTION

SUNGARD PENTAMATION - FINANCE PLUS V 4.0
DATE: 10/02/13
TIME: 07:57:18

VILLAGE OF LAKE ZURICH
EXPENDITURE AUDIT TRAIL

PAGE NUMBER: 24
AUDIT21

SELECTION CRITERIA: orgn.fund="101" 1=1
ACCOUNTING PERIOD: 5/14

SORTED BY: FUND,DEPARTMENT,PROGRAM,ACCOUNT

TOTALED ON: FUND,DEPARTMENT

PAGE BREAKS ON: FUND,DEPARTMENT

FUND - 101 -
BUDGET CODE - 10167975 - SPECIAL INTEREST & EVENTS

ACCOUNT	DATE	T/C	PO NUMBER	REFERENCE	VENDOR	BUDGET	EXPENDITURES	ENCUMBRANCES	DESCRIPTION	CUMULATIVE BALANCE
101-67-975-10167975 - SPECIAL INTEREST & EVENTS										
5110	FULL TIME					.00	.00	.00	BEGINNING BALANCE	
	TOTAL FULL TIME					.00	.00	.00		.00
5111	PART TIME					990.00	173.62	.00	BEGINNING BALANCE	
	TOTAL PART TIME					990.00	173.62	.00		816.38
5113	OVERTIME					650.00	509.11	.00	BEGINNING BALANCE	
	TOTAL OVERTIME					650.00	509.11	.00		140.89
5121	IMRF					83.00	69.73	.00	BEGINNING BALANCE	
	TOTAL IMRF					83.00	69.73	.00		13.27
5122	SOCIAL SECURITY					99.00	38.90	.00	BEGINNING BALANCE	
	TOTAL SOCIAL SECURITY					99.00	38.90	.00		60.10
5123	MEDICARE					23.00	9.08	.00	BEGINNING BALANCE	
	TOTAL MEDICARE					23.00	9.08	.00		13.92
5132	HEALTH INS					.00	.00	.00	BEGINNING BALANCE	
	TOTAL HEALTH INS					.00	.00	.00		.00
519964	PARK OUTINGS					.00	.00	.00	BEGINNING BALANCE	
	TOTAL PARK OUTINGS					.00	.00	.00		.00
519977	BUILDING RENTAL					.00	.00	.00	BEGINNING BALANCE	
	TOTAL BUILDING RENTAL					.00	.00	.00		.00
5241	PROGRAM SVCS					6,995.00	2,389.00	.00	BEGINNING BALANCE	
	09/03/13 17-5 14001355-01				3681 AMERICAN MOBILE			1,800.00	STAGE RENTAL-SEPTEMBER 14	

* THERE IS A NOTE ASSOCIATED WITH THIS TRANSACTION

SUNGARD PENTAMATION - FINANCE PLUS V 4.0
 DATE: 10/02/13
 TIME: 07:57:18

VILLAGE OF LAKE ZURICH
 EXPENDITURE AUDIT TRAIL

PAGE NUMBER: 25
 AUDIT21

SELECTION CRITERIA: orgn.fund="101" 1=1
 ACCOUNTING PERIOD: 5/14

SORTED BY: FUND, DEPARTMENT, PROGRAM, ACCOUNT

TOTALED ON: FUND, DEPARTMENT

PAGE BREAKS ON: FUND, DEPARTMENT

FUND - 101 -
 BUDGET CODE - 10167975 - SPECIAL INTEREST & EVENTS

ACCOUNT DATE	T/C	PO NUMBER	REFERENCE	VENDOR	BUDGET	EXPENDITURES	ENCUMBRANCES	DESCRIPTION	CUMULATIVE BALANCE
09/03/13	17-5	14001356-01		79875 SLY ROSE ENTERTA			200.00	ENTERTAINMENT-SEPTEMBER 1	
09/03/13	17-5	14001359-01		19150 KLOSS DISTRIBUTI			1,672.50	BEER FOR THE 4TH	
09/06/13	18-5	14001355-01		3681 AMERICAN MOBILE			-1,800.00	CHANGE ORDER - 1	
09/06/13	17-5	14001397-01		10278 BONOMO, KURT			100.00	ENTERTAINMENT-ROCK THE BL	
09/09/13	21-5	14001356-01	95018	79875 SLY ROSE ENTERTA		200.00	-200.00	ENTERTAINMENT-SEPTEMBER 1	
09/09/13	21-5	14001359-01	94937	19150 KLOSS DISTRIBUTI		1,672.50	-1,672.50	BEER FOR THE 4TH	
09/09/13	21-5	14001397-01	94919	10278 BONOMO, KURT		100.00	-100.00	ENTERTAINMENT-ROCK THE BL	
09/12/13	17-5	14001487-01		58240 MORETTI, KATE			247.50	GUITAR	
09/16/13	17-5	14001539-01		48257 KANTOR, GARY			75.00	MAGIC CLASS-SEPTEMBER 10	
09/17/13	20-5	14001397-01	94919	10278 BONOMO, KURT		-100.00	100.00	ENTERTAINMENT-ROCK THE BL	
09/25/13	17-5	14001660-01		15278 COMMUNITY SEWER			1,450.00	ROCK THE BLOCK-PORTA POTT	
09/27/13	21-5	14001487-01	JUN/JUL2013	58240 MORETTI, KATE		247.50	-247.50	GUITAR	
09/27/13	21-5	14001539-01	SEPT 2013	48257 KANTOR, GARY		75.00	-75.00	MAGIC CLASS-SEPTEMBER 10	
09/27/13	18-5	14001660-01		15278 COMMUNITY SEWER			-1,450.00	CHANGE ORDER - 1	
TOTAL PROGRAM SVCS					6,995.00	4,584.00	100.00		2,311.00
5361 PROGRAM SUPPLIES									
09/24/13	17-5	14001619-01		48220 KADZIELAWSKI, AL	6,400.00	1,438.26	.00	BEGINNING BALANCE	
09/27/13	18-5	14001619-01		48220 KADZIELAWSKI, AL			305.26	REIMBURSEMENT-ROCK THE BL	
TOTAL PROGRAM SUPPLIES					6,400.00	1,438.26	-305.26	CHANGE ORDER - 1	4,961.74
5414 RENTALS									
TOTAL RENTALS					500.00	.00	.00	BEGINNING BALANCE	500.00
5422 BLOCK PARTY COSTS									
09/06/13	18-5	14001355-01		3681 AMERICAN MOBILE	.00	3,580.00	.00	BEGINNING BALANCE	
09/13/13	21-5	14001355-01	94894	3681 AMERICAN MOBILE			1,800.00	CHANGE ORDER - 1	
09/24/13	17-5	14001595-01		10631 BRAINSTORM MARKE		1,800.00	-1,800.00	STAGE RENTAL-ROCK/BLK	
09/24/13	17-5	14001595-02		23225 ELEGANT EMBROIDE			535.00	NO ALCOHOL BEYOND THIS PO	
09/24/13	17-5	14001608-01		10631 BRAINSTORM MARKE			535.00	NO OUTSIDE ALCOHOL/WRISTB	
09/24/13	17-5	14001609-01		35783 HENMUELLER, KRIS			172.00	T-SHIRTS - ROCK THE BLOCK	
09/24/13	17-5	14001643-01		37025 HOME DEPOT CREDI			250.00	POSTER/LOGO DESIGN - ROCK	
09/26/13	17-5	14001673-01		85211 TRAFFIC CONTROL			44.50	GROUND WIRE	
09/26/13	17-5	14001686-01		70250 PETTY CASH - FIN			534.00	FLASHERS, DETOUR ARROWS	
09/27/13	21-5	14001595-01	213917	10631 BRAINSTORM MARKE		535.00	100.00	ROCK THE BLOCK - EQUIP	
09/27/13	21-5	14001595-02	213917	10631 BRAINSTORM MARKE		535.00	-535.00	NO ALCOHOL BEYOND THIS PO	
09/27/13	21-5	14001608-01	30087	23225 ELEGANT EMBROIDE		172.00	-535.00	NO OUTSIDE ALCOHOL/WRISTB	
* THERE IS A NOTE ASSOCIATED WITH THIS TRANSACTION									

SUNGARD PENTAMATION - FINANCE PLUS V 4.0
 DATE: 10/02/13
 TIME: 07:57:18

VILLAGE OF LAKE ZURICH
 EXPENDITURE AUDIT TRAIL

PAGE NUMBER: 26
 AUDIT21

SELECTION CRITERIA: orgn.fund="101" 1=1
 ACCOUNTING PERIOD: 5/14

SORTED BY: FUND,DEPARTMENT,PROGRAM,ACCOUNT

TOTALED ON: FUND,DEPARTMENT

PAGE BREAKS ON: FUND,DEPARTMENT

FUND - 101 -
 BUDGET CODE - 10167975 - SPECIAL INTEREST & EVENTS

ACCOUNT	DATE	T/C	PO NUMBER	REFERENCE	VENDOR	BUDGET	EXPENDITURES	ENCUMBRANCES	DESCRIPTION	CUMULATIVE BALANCE
	09/27/13	21-5	14001609-01	LZ-101	35783 HENMUELLER, KRIS		250.00	-250.00	POSTER/LOGO DESIGN - ROCK	
	09/27/13	18-5	14001619-01		48220 KADZIELAWSKI, AL			305.26	CHANGE ORDER - 1	
	09/27/13	21-5	14001619-01	BLK 9-14	48220 KADZIELAWSKI, AL		305.26	-305.26	REIMBURSEMENT-ROCK THE BL	
	09/27/13	21-5	14001643-01	7034150	37025 HOME DEPOT CREDI		44.50	-44.50	GROUND WIRE	
	09/27/13	18-5	14001660-01		15278 COMMUNITY SEWER			1,450.00	CHANGE ORDER - 1	
	09/27/13	21-5	14001660-01	25396	15278 COMMUNITY SEWER		1,450.00	-1,450.00	ROCK THE BLOCK-PORTA POTT	
	09/27/13	21-5	14001673-01	10941	85211 TRAFFIC CONTROL		534.00	-534.00	FLASHERS, DETOUR ARROWS	
	09/27/13	21-5	14001686-01	SEPT 2013	70250 PETTY CASH - FIN		100.00	-100.00	ROCK THE BLOCK - EQUIP	
				TOTAL BLOCK PARTY COSTS		.00	9,305.76	.00		-9,305.76
101-67-985-10167985 - FITNESS										
5111				PART TIME		2,400.00	762.81	.00	BEGINNING BALANCE	
	09/13/13	19-5		091313			100.00	.00	Pro091313	
				TOTAL PART TIME		2,400.00	862.81	.00		1,537.19
5122				SOCIAL SECURITY		185.00	47.29	.00	BEGINNING BALANCE	
	09/13/13	19-5		091313			6.20	.00	Pro091313	
				TOTAL SOCIAL SECURITY		185.00	53.49	.00		131.51
5123				MEDICARE		43.00	11.06	.00	BEGINNING BALANCE	
	09/13/13	19-5		091313			1.45	.00	Pro091313	
				TOTAL MEDICARE		43.00	12.51	.00		30.49
5151				LICENSING/CERTIFICATIONS		.00	.00	.00	BEGINNING BALANCE	
				TOTAL LICENSING/CERTIFICATIONS		.00	.00	.00		.00
5241				PROGRAM SVCS		4,875.00	714.40	120.00	BEGINNING BALANCE	
	09/09/13	21-5	14001310-01	94975	50193 KONDIC, JENNIFER		120.00	-120.00	DROP-IN YOGA PARTICIPANTS	
				TOTAL PROGRAM SVCS		4,875.00	834.40	.00		4,040.60
5361				PROGRAM SUPPLIES		150.00	.00	.00	BEGINNING BALANCE	
	09/27/13	21-5	14001717-01	SNS100130618	80785 SPRI PRODUCTS IN		97.13	-97.13	FITNESS CLASS SUPPLIES-XE	
	09/30/13	17-5	14001717-01		80785 SPRI PRODUCTS IN		97.13	97.13	FITNESS CLASS SUPPLIES-XE	
				TOTAL PROGRAM SUPPLIES		150.00	97.13	.00		52.87

* THERE IS A NOTE ASSOCIATED WITH THIS TRANSACTION

SUNGARD PENTAMATION - FINANCE PLUS V 4.0
DATE: 10/02/13
TIME: 07:57:18

VILLAGE OF LAKE ZURICH
EXPENDITURE AUDIT TRAIL

PAGE NUMBER: 27
AUDIT21

SELECTION CRITERIA: orgn.fund="101" 1=1
ACCOUNTING PERIOD: 5/14

SORTED BY: FUND,DEPARTMENT,PROGRAM,ACCOUNT

TOTALED ON: FUND,DEPARTMENT

PAGE BREAKS ON: FUND,DEPARTMENT

FUND - 101 -
BUDGET CODE - 10167985 - FITNESS

ACCOUNT DATE	T/C	PO NUMBER	REFERENCE	VENDOR	BUDGET	EXPENDITURES	ENCUMBRANCES	DESCRIPTION	CUMULATIVE BALANCE
539901	OTHER IMP				.00	.00	.00	BEGINNING BALANCE	
	TOTAL OTHER IMP				.00	.00	.00		.00
101-67-990-10167990 - RENTALS (FACILITY/PARK)									
5361	PROGRAM SUPPLIES				300.00	.00	.00	BEGINNING BALANCE	
	TOTAL PROGRAM SUPPLIES				300.00	.00	.00		300.00
101-67-995-10167995 - CONCESSIONS									
5112	SEASONAL				.00	.00	.00	BEGINNING BALANCE	
	TOTAL SEASONAL				.00	.00	.00		.00
5122	SOCIAL SECURITY				.00	.00	.00	BEGINNING BALANCE	
	TOTAL SOCIAL SECURITY				.00	.00	.00		.00
5123	MEDICARE				.00	.00	.00	BEGINNING BALANCE	
	TOTAL MEDICARE				.00	.00	.00		.00
5356	CONCESSION SUPPLIES				400.00	.00	.00	BEGINNING BALANCE	
	TOTAL CONCESSION SUPPLIES				400.00	.00	.00		400.00
5415	TAXES				200.00	.00	.00	BEGINNING BALANCE	
	TOTAL TAXES				200.00	.00	.00		200.00
101-67-H98-10167H98 - SPCL EVENTS (HISTORICAL)									
5111	PART TIME				.00	.00	.00	BEGINNING BALANCE	
	TOTAL PART TIME				.00	.00	.00		.00
5113	OVERTIME				.00	.00	.00	BEGINNING BALANCE	

* THERE IS A NOTE ASSOCIATED WITH THIS TRANSACTION

SUNGARD PENTAMATION - FINANCE PLUS V 4.0
 DATE: 10/02/13
 TIME: 07:57:18

VILLAGE OF LAKE ZURICH
 EXPENDITURE AUDIT TRAIL

PAGE NUMBER: 28
 AUDIT21

SELECTION CRITERIA: orgn.fund="101" 1=1
 ACCOUNTING PERIOD: 5/14

SORTED BY: FUND,DEPARTMENT,PROGRAM,ACCOUNT

TOTALED ON: FUND,DEPARTMENT

PAGE BREAKS ON: FUND,DEPARTMENT

FUND - 101 -
 BUDGET CODE - 10167H98 - SPCL EVENTS (HISTORICAL)

ACCOUNT DATE	T/C	PO NUMBER	REFERENCE	VENDOR	BUDGET	EXPENDITURES	ENCUMBRANCES	DESCRIPTION	CUMULATIVE BALANCE
TOTAL OVERTIME					.00	.00	.00		.00
5121	IMRF				.00	.00	.00	BEGINNING BALANCE	.00
TOTAL IMRF					.00	.00	.00		.00
5122	SOCIAL SECURITY				.00	.00	.00	BEGINNING BALANCE	.00
TOTAL SOCIAL SECURITY					.00	.00	.00		.00
5123	MEDICARE				.00	.00	.00	BEGINNING BALANCE	.00
TOTAL MEDICARE					.00	.00	.00		.00
5132	HEALTH INS				.00	.00	.00	BEGINNING BALANCE	.00
TOTAL HEALTH INS					.00	.00	.00		.00
519964	PARK OUTINGS				.00	.00	.00	BEGINNING BALANCE	.00
TOTAL PARK OUTINGS					.00	.00	.00		.00
519970	PROGRAM EQUIPMENT				.00	.00	.00	BEGINNING BALANCE	.00
TOTAL PROGRAM EQUIPMENT					.00	.00	.00		.00
5241	PROGRAM SVCS				.00	.00	.00	BEGINNING BALANCE	.00
TOTAL PROGRAM SVCS					.00	.00	.00		.00
5359	OTHER SUPPLIES				.00	.00	.00	BEGINNING BALANCE	.00
TOTAL OTHER SUPPLIES					.00	.00	.00		.00
5361	PROGRAM SUPPLIES				.00	.00	.00	BEGINNING BALANCE	.00
TOTAL PROGRAM SUPPLIES					.00	.00	.00		.00
TOTAL DEPARTMENT - PARKS & RECREATION					1,020,906.00	425,424.48	2,320.93		593,160.59

* THERE IS A NOTE ASSOCIATED WITH THIS TRANSACTION

SUNGARD PENTAMATION - FINANCE PLUS V 4.0
DATE: 10/02/13
TIME: 07:57:18

VILLAGE OF LAKE ZURICH
EXPENDITURE AUDIT TRAIL

PAGE NUMBER: 29
AUDIT21

SELECTION CRITERIA: orgn.fund="101" 1=1
ACCOUNTING PERIOD: 5/14

SORTED BY: FUND,DEPARTMENT,PROGRAM,ACCOUNT

TOTALED ON: FUND,DEPARTMENT

PAGE BREAKS ON: FUND,DEPARTMENT

FUND - 101 -
BUDGET CODE - 10167H98 - SPCL EVENTS (HISTORICAL)

ACCOUNT	DATE	T/C	PO NUMBER	REFERENCE	VENDOR	BUDGET	EXPENDITURES	ENCUMBRANCES	DESCRIPTION	CUMULATIVE BALANCE
TOTAL FUND -						1,534,895.00	599,073.27	74,370.11		861,451.62
TOTAL REPORT						1,534,895.00	599,073.27	74,370.11		861,451.62

* THERE IS A NOTE ASSOCIATED WITH THIS TRANSACTION

Park Improvement Fund Activity

Through September 30, 2013

SUNGARD PENTAMATION - FINANCE PLUS V 4.0
 DATE: 10/02/13
 TIME: 08:06:01

VILLAGE OF LAKE ZURICH
 REVENUE AUDIT TRAIL

PAGE NUMBER: 3
 AUDIT41

SELECTION CRITERIA: orgn.fund="402"
 ACCOUNTING PERIOD: 5/14

(INACTIVE ACCOUNTS INCLUDED)
 SORTED BY: FUND,DEPARTMENT,PROGRAM,ACCOUNT,ACCOUNT,PERIOD

TOTALED ON: FUND,DEPARTMENT,ACCOUNT,PERIOD

PAGE BREAKS ON: FUND,DEPARTMENT

ACCOUNT DATE	T/C	RECEIVE	REFERENCE PAYER/VENDOR	BUDGET	RECEIPTS	RECEIVABLES DESCRIPTION	CUMULATIVE BALANCE
402-79-900-40279900 - PARK IMPROV							
4399		FARMERS MARKET FEE		.00	5,140.00	.00 BEGINNING BALANCE	
	09/11/13	24-5			40.00	.00 CASH RECEIPTS INTERFACE	
	09/23/13	24-5			150.00	.00 CASH RECEIPTS INTERFACE	
		TOTAL PERIOD 5		.00	190.00	.00	-5,330.00
		TOTAL FARMERS MARKET FEE		.00	5,330.00	.00	-5,330.00
4692		GCI INTEREST (HISTORICAL)		.00	.00	.00 BEGINNING BALANCE	
		TOTAL PERIOD 5		.00	.00	.00	.00
		TOTAL GCI INTEREST (HISTORICAL)		.00	.00	.00	.00
4701		INTEREST INCOME		2,000.00	697.02	.00 BEGINNING BALANCE	
		TOTAL PERIOD 5		.00	.00	.00	1,302.98
		TOTAL INTEREST INCOME		2,000.00	697.02	.00	1,302.98
4851		DONATIONS		8,200.00	.00	.00 BEGINNING BALANCE	
		TOTAL PERIOD 5		.00	.00	.00	8,200.00
		TOTAL DONATIONS		8,200.00	.00	.00	8,200.00
4859		COMMUNITY GARDEN DONATION		.00	421.00	.00 BEGINNING BALANCE	
		TOTAL PERIOD 5		.00	.00	.00	-421.00
		TOTAL COMMUNITY GARDEN DONATION		.00	421.00	.00	-421.00
4953		CHANGE IN MARKET VALUE		.00	-3,402.17	.00 BEGINNING BALANCE	

* THERE IS A NOTE ASSOCIATED WITH THIS TRANSACTION

SUNGARD PENTAMATION - FINANCE PLUS V 4.0
DATE: 10/02/13
TIME: 08:06:01

VILLAGE OF LAKE ZURICH
REVENUE AUDIT TRAIL

PAGE NUMBER: 4
AUDIT41

SELECTION CRITERIA: orgn.fund="402"
ACCOUNTING PERIOD: 5/14

(INACTIVE ACCOUNTS INCLUDED)
SORTED BY: FUND,DEPARTMENT, PROGRAM,ACCOUNT,ACCOUNT, PERIOD

TOTALED ON: FUND,DEPARTMENT,ACCOUNT,PERIOD

PAGE BREAKS ON: FUND,DEPARTMENT

ACCOUNT DATE	T/C	RECEIVE	REFERENCE	PAYER/VENDOR	BUDGET	RECEIPTS	RECEIVABLES DESCRIPTION	CUMULATIVE BALANCE
TOTAL PERIOD 5					.00	.00	.00	3,402.17
TOTAL CHANGE IN MARKET VALUE					.00	-3,402.17	.00	3,402.17
TOTAL DEPARTMENT - CAPITAL					10,200.00	3,045.85	.00	7,154.15
TOTAL FUND - PARK IMPROVEMENT					10,200.00	3,045.85	.00	7,154.15
TOTAL REPORT					10,200.00	3,045.85	.00	7,154.15

* THERE IS A NOTE ASSOCIATED WITH THIS TRANSACTION

SUNGARD PENTAMATION - FINANCE PLUS V 4.0
 DATE: 10/02/13
 TIME: 08:01:32

VILLAGE OF LAKE ZURICH
 EXPENDITURE AUDIT TRAIL

PAGE NUMBER: 1
 AUDIT21

SELECTION CRITERIA: orgn.fund="402" 1=1
 ACCOUNTING PERIOD: 5/14

SORTED BY: FUND, DEPARTMENT, PROGRAM, ACCOUNT

TOTALED ON: FUND, DEPARTMENT

PAGE BREAKS ON: FUND, DEPARTMENT

FUND - 402 - PARK IMPROVEMENT
 BUDGET CODE - 40236042 - PARK IMPROVEMENT - PW

ACCOUNT DATE	T/C	PO NUMBER	REFERENCE	VENDOR	BUDGET	EXPENDITURES	ENCUMBRANCES	DESCRIPTION	CUMULATIVE BALANCE
402-36-042-40236042 - PARK IMPROVEMENT - PW									
5325		BLDG & GROUND MAINT SUPPL			.00	.00		.00 BEGINNING BALANCE	
		TOTAL BLDG & GROUND MAINT SUPPL			.00	.00		.00	.00
5327		EQUIP MAINT PART&SUPPLIES			8,000.00	539.30		.00 BEGINNING BALANCE	
09/03/13	17-5	14001364-02		13160 CASPER TRUE VALU				5.49 PARK SIGN MAINT	
09/09/13	21-5	14001364-02 94925		13160 CASPER TRUE VALU		5.49		-5.49 PARK SIGN MAINT	
		TOTAL EQUIP MAINT PART&SUPPLIES			8,000.00	544.79		.00	7,455.21
5520		LAND IMPROVEMENTS			.00	.00		.00 BEGINNING BALANCE	
		TOTAL LAND IMPROVEMENTS			.00	.00		.00	.00
TOTAL DEPARTMENT - P/W-GEN SVCS					8,000.00	544.79		.00	7,455.21

* THERE IS A NOTE ASSOCIATED WITH THIS TRANSACTION

SUNGARD PENTAMATION - FINANCE PLUS V 4.0
 DATE: 10/02/13
 TIME: 08:01:32

VILLAGE OF LAKE ZURICH
 EXPENDITURE AUDIT TRAIL

PAGE NUMBER: 2
 AUDIT21

SELECTION CRITERIA: orgn.fund="402" 1=1
 ACCOUNTING PERIOD: 5/14

SORTED BY: FUND,DEPARTMENT,PROGRAM,ACCOUNT

TOTALED ON: FUND,DEPARTMENT

PAGE BREAKS ON: FUND,DEPARTMENT

FUND - 402 - PARK IMPROVEMENT
 BUDGET CODE - 40267900 - PARK IMP

ACCOUNT DATE	T/C	PO NUMBER	REFERENCE	VENDOR	BUDGET	EXPENDITURES	ENCUMBRANCES	DESCRIPTION	CUMULATIVE BALANCE
402-67-900-40267900 - PARK IMP									
5219			OTHER PROFESSIONAL SVCS		3,000.00	.00		.00 BEGINNING BALANCE	
			TOTAL OTHER PROFESSIONAL SVCS		3,000.00	.00		.00	3,000.00
5325			BLDG & GROUND MAINT SUPPL		.00	.00		.00 BEGINNING BALANCE	
			TOTAL BLDG & GROUND MAINT SUPPL		.00	.00		.00	.00
5420			FARMERS MARKET COSTS		.00	1,603.52		.00 BEGINNING BALANCE	
09/04/13	17-5	14001380-01		3503 ALO, OLINDO				225.00 FARMERS MARKET ENTERTAINM	
09/09/13	21-5	14001380-01	94946	3503 ALO, OLINDO		225.00		-225.00 FARMERS MARKET ENTERTAINM	
09/18/13	17-5	14001542-01		12521 INLAND BANK				984.00 AUG 2013	
09/23/13	18-5	14001542-01		12521 INLAND BANK				.00 CHANGE ORDER - 1	
09/23/13	18-5	14001542-01		12521 INLAND BANK				.00 CHANGE ORDER - 2	
09/26/13	20-5		WT000132	12521 INLAND BANK		-122.00		.00 CREDIT	
09/26/13	20-5	14001542-01	WT000132	12521 INLAND BANK		984.00		-984.00 AUG 2013	
			TOTAL FARMERS MARKET COSTS		.00	2,690.52		.00	-2,690.52
5421			COMMUNITY GARDEN		.00	.00		.00 BEGINNING BALANCE	
			TOTAL COMMUNITY GARDEN		.00	.00		.00	.00
5520			LAND IMPROVEMENTS		256,000.00	3,060.50		.00 BEGINNING BALANCE	
09/18/13	17-5	14001547-01		37025 HOME DEPOT CREDI				100.41 MATERIALS FOE CWEST SOCCE	
09/18/13	17-5	14001547-02		37025 HOME DEPOT CREDI				710.17 MATERIALS FOE CWEST SOCCE	
09/18/13	17-5	14001547-03		37025 HOME DEPOT CREDI				262.59 MATERIALS FOE CWEST SOCCE	
09/18/13	17-5	14001547-04		37025 HOME DEPOT CREDI				32.82 MATERIALS FOE CWEST SOCCE	
09/27/13	21-5	14001547-01	9033426	37025 HOME DEPOT CREDI		100.41		-100.41 SHEATING/STUDS	
09/27/13	21-5	14001547-02	9043336	37025 HOME DEPOT CREDI		710.17		-710.17 SIDEWALK FRAMES-CSW	
09/27/13	21-5	14001547-03	9043344	37025 HOME DEPOT CREDI		262.59		-262.59 SIDEWALK FRAMES-CSW P	
09/27/13	21-5	14001547-04	9033438	37025 HOME DEPOT CREDI		32.82		-32.82 DRYWALL SCREWS/STUDS	
			TOTAL LAND IMPROVEMENTS		256,000.00	4,166.49		.00	251,833.51
5530			BLDG & BLDG IMPROVEMENTS		113,000.00	3,982.26		.00 BEGINNING BALANCE	
09/06/13	17-5	14001414-01		3236 ALL AMERICAN EXT				868.50 ROOF IMPROVEMENTS BUFFALO	

* THERE IS A NOTE ASSOCIATED WITH THIS TRANSACTION

VILLAGE OF LAKE ZURICH
EXPENDITURE AUDIT TRAIL

SELECTION CRITERIA: orgn.fund="402" 1=1
ACCOUNTING PERIOD: 5/14

TOTALED ON: FUND, DEPARTMENT

PAGE BREAKS ON: FUND, DEPARTMENT

FUND - 402 - PARK IMPROVEMENT
BUDGET CODE - 40267900 - PARK IMP

ACCOUNT DATE	T/C	PO NUMBER	REFERENCE	VENDOR	BUDGET	EXPENDITURES	ENCUMBRANCES	DESCRIPTION	CUMULATIVE BALANCE
09/09/13	21-5	14001414-01	94907	3236 ALL AMERICAN EXT		868.50	-868.50	ROOF IMPROVEMENTS	BUFFALO
		TOTAL BLDG & BLDG IMPROVEMENTS			113,000.00	4,850.76	.00		108,149.24
5550		MACHINERY & EQUIPMENT			5,000.00	.00	.00	BEGINNING BALANCE	
		TOTAL MACHINERY & EQUIPMENT			5,000.00	.00	.00		5,000.00
		TOTAL DEPARTMENT - PARKS & RECREATION			377,000.00	11,707.77	.00		365,292.23

* THERE IS A NOTE ASSOCIATED WITH THIS TRANSACTION

SUNGARD PENTAMATION - FINANCE PLUS V 4.0
DATE: 10/02/13
TIME: 08:01:32

VILLAGE OF LAKE ZURICH
EXPENDITURE AUDIT TRAIL

PAGE NUMBER: 4
AUDIT21

SELECTION CRITERIA: orgn.fund="402" 1=1
ACCOUNTING PERIOD: 5/14

SORTED BY: FUND,DEPARTMENT,PROGRAM,ACCOUNT

TOTALED ON: FUND,DEPARTMENT

PAGE BREAKS ON: FUND,DEPARTMENT

FUND - 402 - PARK IMPROVEMENT
BUDGET CODE - 40280000 - PARK IMP-PROJ (HISTORICAL

ACCOUNT	DATE	T/C	PO NUMBER	REFERENCE	VENDOR	BUDGET	EXPENDITURES	ENCUMBRANCES	DESCRIPTION	CUMULATIVE BALANCE
402-80-000-40280000 - PARK IMP-PROJ (HISTORICAL										
539901				OTHER IMP		.00	.00	.00	BEGINNING BALANCE	
				TOTAL OTHER IMP		.00	.00	.00		.00
				TOTAL DEPARTMENT - PROJECTS		.00	.00	.00		.00
				TOTAL FUND - PARK IMPROVEMENT		385,000.00	12,252.56	.00		372,747.44
				TOTAL REPORT		385,000.00	12,252.56	.00		372,747.44

* THERE IS A NOTE ASSOCIATED WITH THIS TRANSACTION



This copy is for personal, non-commercial use. To order presentation-ready copies for distribution you can: 1) Use the "Reprint" button found on the top and bottom of every article, 2) Visit reprints.theygsgroup.com/dailyherald.asp for samples and additional information or 3) **Order a reprint of this article now.**

Article posted: 9/11/2013 4:43 PM

Rock the Block bash to showcase downtown Lake Zurich

By Bob Susnjara

Lake Zurich is using a Saturday night street party as a way to lure developers for a long-desired downtown redevelopment.

Rock the Block comes on the heels of a recent, significant move by the Lake Zurich village board regarding downtown. Trustees agreed to spend \$115,800 to tear down five village-owned buildings, followed by grooming and seeding of the properties to make them more attractive for mixed-use projects.

Downtown redevelopment has been a longtime issue in Lake Zurich. After months of feasibility studies, the village board in March 2002 approved boundaries for a special taxing district to lure developers to the downtown, but nothing significant has occurred because of the weak economy and other factors.

In an effort to show off downtown's potential and how residents would be willing to go there to patronize businesses, the inaugural all-ages Rock the Block party will be staged by village government on Main Street, between Old Rand Road and Church Street. Three bands, food, beer, face painting, balloon art and more will be part of the fun from 6 to 11 p.m. Saturday.

Dave Peterson, recreation manager for the village's park and recreation department, said some developers have been invited to attend Rock the Block.

Mayor Thomas Poynton said never before has such a large-scale event been attempted on downtown Lake Zurich's streets.

"I think we're going to have a pretty good party," Poynton said. "I was at the Wauconda street dance (recently) and they had an unbelievable crowd. And I think we're as good as Wauconda or better."

Planning for Rock the Block, which is expected to become an annual event, began after Poynton and the new village board were officially seated in May. A Rock the Block volunteer committee, headed by Peterson, met over roughly eight weeks and included members of the Rotary Club, Lake Zurich Area Chamber of Commerce, the Lions Club, local business owners and residents.

"It was a big help to have a committee of members with local knowledge and marketing (expertise)," Peterson said.

Rock the Block was selected as the street party's name at the recommendation of the committee's marketing professionals.

Cover bands '80s Enough and Friction will be the main acts, with pop artist Sly Rose entertaining between sets. Beer, wine, sangria, mai tais, water and other nonalcoholic beverages will be available for purchase.

Rock the Block will have representation from food trucks and Main Street restaurants. Babycakes, Gelato D'Oro and Pupusita Express will be among the food trucks, Peterson said.

Although there is no admission charge, organizers ask that patrons donate three nonperishable items to the St. Vincent DePaul Food Pantry at St. Francis de Sales Catholic Church in Lake Zurich. Great Lakes Naval Station personnel will assist in selling bottled water to benefit the food pantry.

For more information, check [facebook.com/lakezurichrocktheblock](https://www.facebook.com/lakezurichrocktheblock).

Copyright © 2013 Paddock Publications, Inc. All rights reserved.

Your local source since 1968.

\$1 | Thursday, September 19, 2013 | A WISAPORTS company | A CHICAGO SUN-TIMES company | lakezurich.suntimes.com



Lake Zurich Courier

Serving Lake Zurich,
Hawthorn Woods and Kildeer

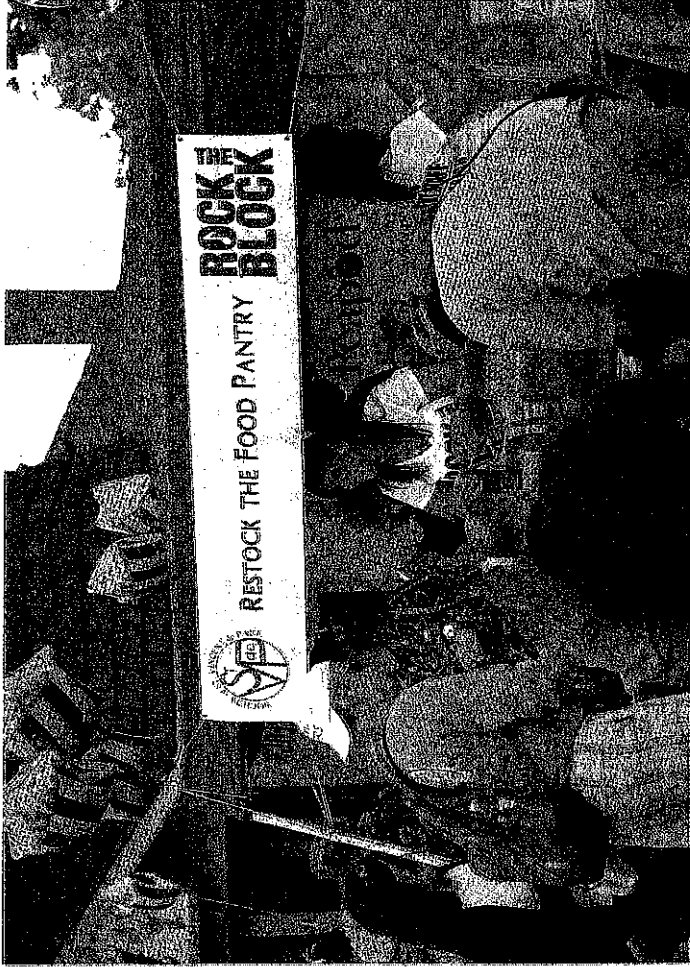


Community service

D-95 SCHOOL BOARD
DEBATES \$90M BUDGET

OUR GUIDE
TO AREA
**CASINO
GAMING**

LAKE ZURICH



Food donations at Rock the Block were collected for the St. Vincent de Paul Food Pantry at the St. Francis de Sales parish's ministry center. Those who brought at least three non-perishable food items received raffle tickets for prizes. (PHOTO COURTESY GUYTON PHOTOGRAPHY/LLAKE ZURICH)

Rock the Block shows off downtown

BY LAURA PAVIN
 For San Francisco | @LauraPavin
 Organizers of Lake Zurich's first-ever community block party got the turnout they were hoping for, and then some.

Village Parks and Recreation Manager Dave Peterson estimated that Lake Zurich had about 4,000 pairs of eyes on its downtown area Saturday night. The Rock the Block event sold 3,500 wristbands to those 21 and older, and hundreds of children had their own fun getting their faces painted and jumping around in the inflatable house.

"It was such a wonderful success, as far as attendance," Peterson said. "We had so many people of all ages... The marketing effort was awesome and the numbers reflected that."

Most importantly, village officials hope the turnout impressed the right people. Mayor Tom Poynton invited a number of developers to the event, held on Main Street between Old Rand Road and Church Street. The goal was to sell the heart of the downtown area as an attractive area for developers.

On Sunday, Rock the Block's

Facebook page was filled with comments from people that attended the event. Many raved about the fun they had while others continued the downtown revitalization dialogue.

"All we can do is HOPB potential developers see the huge opportunity our downtown represents," Lake Zurich resident Janice Thibodeau Cannon wrote. "Thousands of people jammed the event and proved 'if you build it, we will come!'" Offering suggestions, Thibodeau Cannon said a successful downtown revitalization doesn't involve residential development. She

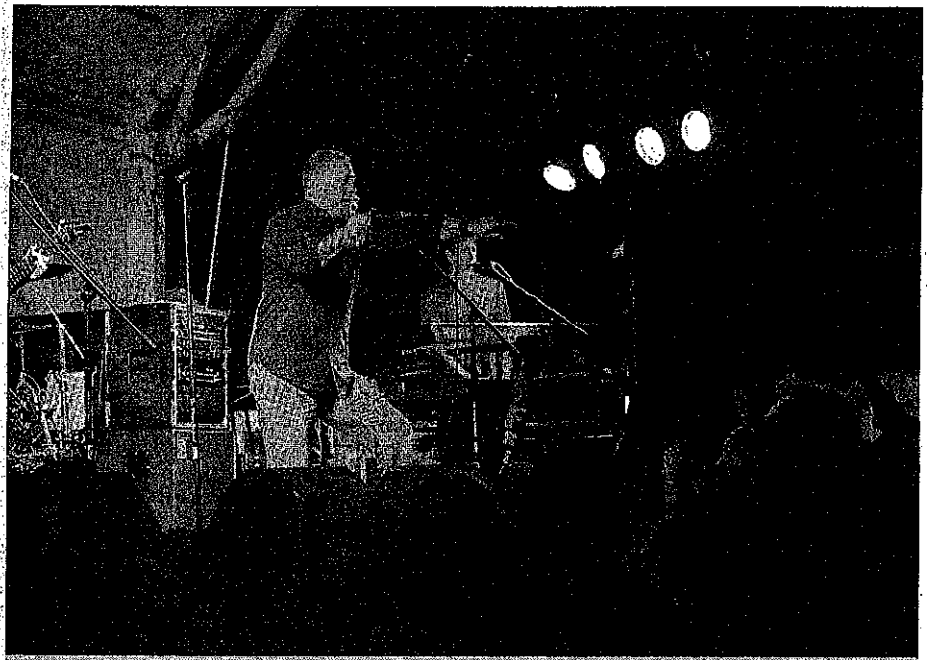
recommended new retail offerings, explaining that Lake Zurich has a sizeable group of people willing to support "dining beverages, sweet treats and unique retail." She added that the recently demolished building on the corner of Old Rand Road and Main Street has the downtown looking better already.

The building at 2-18 W. Main St. was razed last week. Village trustees also approved the demolition of four additional buildings, at a cost of \$15,800, at the Sept. 3 board meeting. The buildings at 61 W. Main St., 32 Monsie Drive, and

28 and 37 Park Ave. are scheduled to disappear by mid-October. In the meantime, many at Rock the Block raved about the fun they had, and requested that the event return in 2014.

Peterson said the beer tent was so popular that it ran out of kegs. A couple of food vendors ran out of food as well.

"Some said it was the busiest they've ever been, and all made it clear that they wanted to return next year," he said. Food trucks at the event included Babywakes, Gelato D'Oro, Hoof and Peas, Stix Grille and



entertainment at Rock the Block included bands 80's Enough and FRICTION as well as Sly Rose Entertainment's DJ and Karaoke. (PHOTO COURTESY GOLDEN PHOTOGRAPHY IN LAKE ZURICH)

Taquero Fusion.

Bands 80's Enough and FRICTION rocked the block, as did Sly Rose Entertainment's DJ and Karaoke.

Food donations were collected the entire night for the St. Vincent de Paul Food Pantry at the St. Francis de Sales parish's ministry center. Those who brought at least three non-perishable food items received raffle tickets for prizes.

Susan Miller, St. Vincent de Paul's special projects coordinator, reported that about 3,000 pounds of food was collected.

"All of the food was sorted and boxed by members of the U.S. Navy who volunteered their time to help us," Miller said.

Due to the volume of the collection, Miller said volunteers weren't able to deliver all of it to the pantry in one day.

Peterson said proceeds from beer wristbands, which cost \$1, would probably return the Rock the Block fund to offset entertainment and other costs. Some of the entertainment was already covered by sponsorships from Midwest Motors, Lake Zurich Tire & Auto and the Ela Coalition Against Youth Substance Abuse.

The \$10,000 entertainment budget paid for a stage, sound and lighting, two bands, a third entertainer, children's entertainment, signs and marketing.

The Rock the Block committee includes Janet Barron, Mary Beth Euker, Miller and Peterson, as well as chamber executive



About 4,000 people packed Lake Zurich's Inaugural Rock the Block party Saturday, Sept. 14. (PHOTO COURTESY GOLDEN PHOTOGRAPHY IN LAKE ZURICH)



"All of the food was sorted and boxed by members of the U.S. Navy who volunteered their time to help us," said Susan Miller, St. Vincent de Paul's special projects coordinator, reporting that about 3,000 pounds of food was collected. (PHOTO COURTESY GOLDEN PHOTOGRAPHY IN LAKE ZURICH)

director Dale Perrin and president Bonnie Conte, and Footloose Frank from the Lake Zurich Lion's Club.

LakeZurich

43°

News | Around Town

LZ Farmers Market Ends First Season

Market another rousing success in Lake Zurich's efforts to provide special events.

Posted by Gloria Casas (Editor) , September 26, 2013 at 09:11 PM



Like 6 Tweet 2

Lake Zurich Farmers Market ends its first season Friday. Photo credit: Gloria Casas

Lake Zurich Farmers Market at Paulus Park is ending its first season Friday, a season that organizers called a rousing success.

6 0 0

"I went there every Friday to talk to all the vendors and make sure everyone is happy," Village President Tom Poynton said. "We have to sustain it. I wanted to make sure it was going well."

"From my perspective, it was a rousing success," he said.

Poynton lead the effort to bring back a Farmers Market to Lake Zurich. A group of volunteers came forward to help plan the Market in a matter of months. The market opened on June 14 and had 26 vendors throughout its 16-week run at Paulus Park, 200 S. Rand Road.

LZ Farmers Market had an eclectic selection of vendors from a booth where people could sharpen their knives to organize bison meat, said Dave Peterson, manager of Parks and Recreation. He also managed the Farmers Market.

"The farms are the big draw," Peterson said. "We learned that quickly. You would see eight to 10 people deep at the farm booths every Friday."

"We are looking to expand next year," he said. "We'd like to add another seven or eight vendors. We probably turned away a half dozen vendors, we had to turn away when they came to us in June and July because we wanted to start out kind of small and evaluate our space."

"We feel there is a demand," Peterson said.

LZFM volunteers, along with Poynton and Peterson, have begun talking about what worked this season and making changes next year.

The location was a plus, Peterson said. He estimated between 300 to 500 people attended every week.

Volunteers also marketed the LZFM very well, providing updates on Facebook, posting signs all over the village and running ads in local newspapers. It was an aggressive effort, he said.

LZFM will look at increasing the number of vendors, adding musical entertainment, children's activities and themed days, he said.

"The vendor feedback was wonderful, almost all want to come back next year," Peterson said.

From the Web

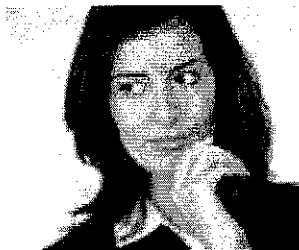
by Taboola



15 NFL Cheerleaders Showing Too Much Skin
Rant Sports



We Can't Help But Stare? Miley Cyrus Photos
StyleBistro



5 Questions That Will Not Get You Hired
Monster

More from Patch

- Lake Zurich Police: Beware of Suspicious Subjects
- Pumpkin Patches, Corn Mazes, Fall Festivals in the Lake Zurich ...
- Lake Zurich Police: Vehicle Theft, Theft of Copper, Credit Cards St...
- LZ Auctions Off Seized Vehicles, One Village

More from the Web

by Taboola

- Top 10 Athletes Turned Actors of All Time (Rant Sports)
- Amazing Picture Of Kim Kardashian (StyleBistro)
- Smelly Washer Class-Action Lawsuit Taken to... (Reviewed.com)
- Billionaire Tells Americans to Prepare For "Finan... (Moneynews)

Dear Dore + Staff -

Thank you so much for your generosity
in letting help you clean up the park +
use the shelter for Sam's party. It was
a huge success! The kids + parents loved it
the weather was awesome. We are so
grateful to your flexibility on this!
Thank you again!

Best. The Hells Family